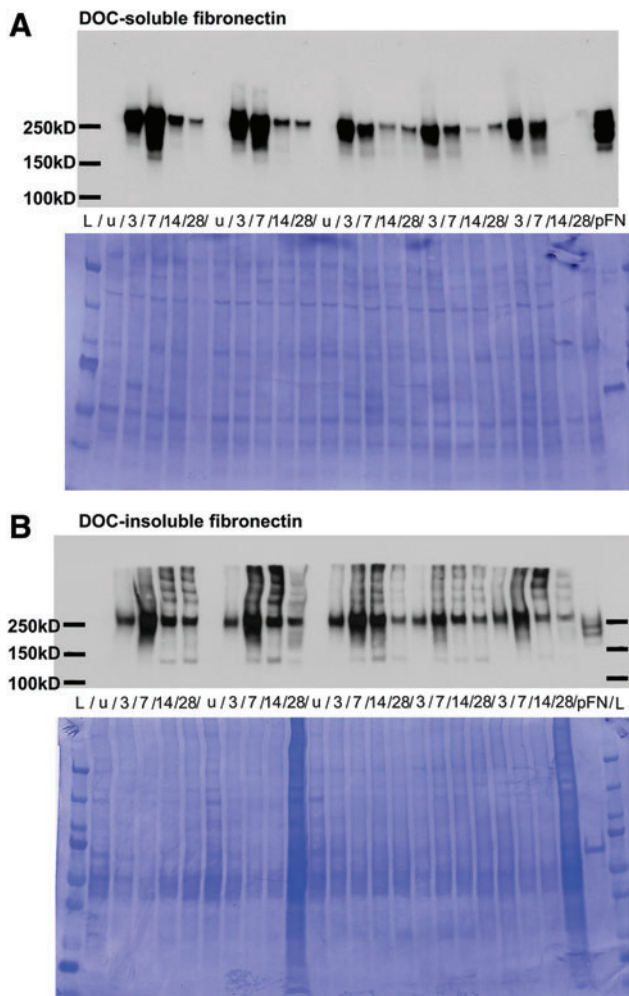


## Supplementary Data



**SUPPLEMENTARY FIG. 1.** Soluble and insoluble fibronectin after spinal cord injury. Demonstration of the entire western blot film along with Coomassie stained membrane for deoxycholate (DOC)-soluble (**A**) and DOC-insoluble (**B**) fibronectin in the injured spinal cord. Numbers below each film represent days after injury corresponding to the bands above. Purified plasma fibronectin (pFN) was loaded in equal amounts in each gel as positive controls. All samples were loaded equally and the film for soluble fibronectin was exposed longer (as indicated by darker pFN band in A, compared with B) to show that there are no > 250 kD bands in the soluble fraction. u, uninjured; L, molecular ladder. Different lanes are biologically independent samples.