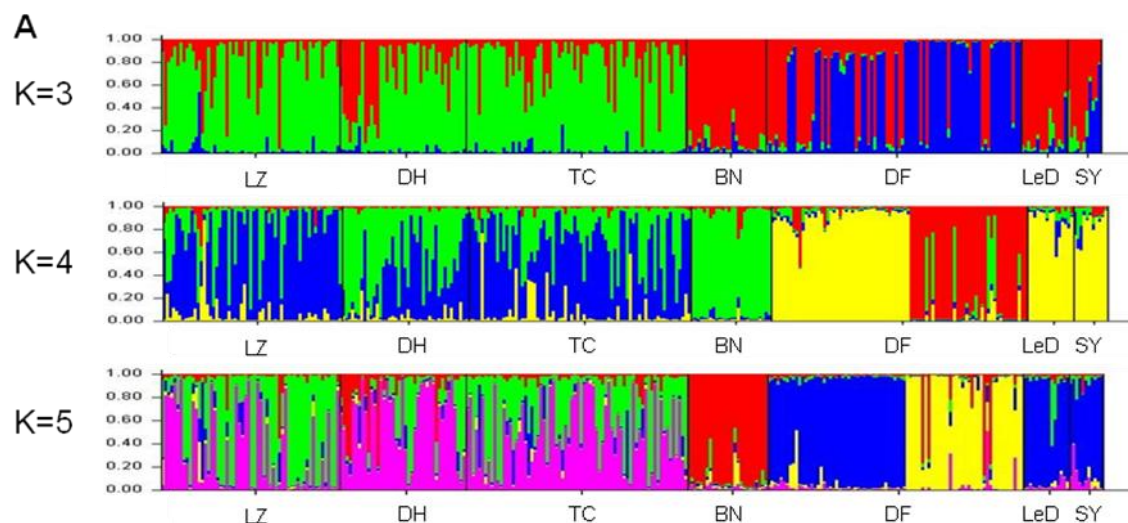


Additional file 4 Bayesian cluster analysis using the STRUCTURE program: results for K = 3-5. (A) Estimated population assignments of *plasmodium falciparum* based on Bayesian cluster analysis of 13 microsatellite loci from 306 individuals at K=3-5, where each color corresponds to a suggested cluster and each individual is represented by a single line. (B) Population structure of *plasmodium falciparum* plotted in multiple lines according to geographic origin at K=5. Isolates 1-197 were collected in Yunnan-Myanmar Region: 1-58 in LZ, mainly 2006; 59-99 in DH, 2007; 100-171 in TC, 2006; 172-197 in BN, 2006. Isolates 198-306 were collected in Hainan Province: 198-213 in DF, 2004; 214-242 in DF, 2007; 243-280 in DF, 2008; 281-295 in LeD, 2004; 296-306 in SY, 2007.



B

