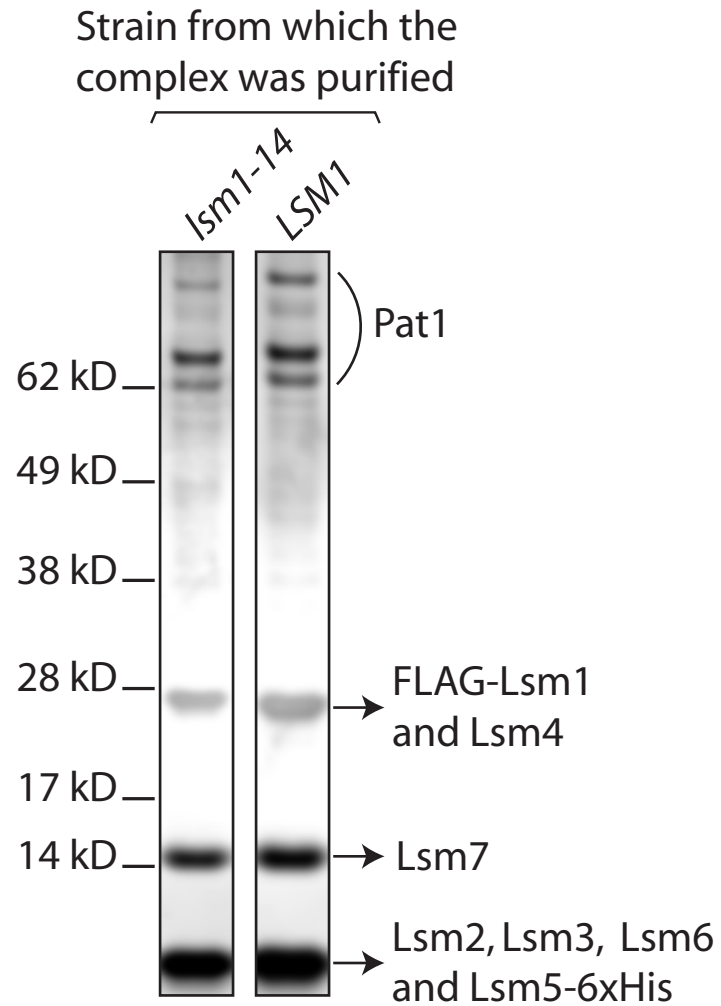


Legends to Supplementary figure:

Figure S1. Analysis of the Lsm1-7-Pat1 complex purified from the *lsm1-14* mutant. *Panel A*, Preparations of Lsm1-7-Pat1 complex purified from wild type and *lsm1-14* cells were separated by SDS-PAGE and visualized by silver staining. Identity of the bands (confirmed by mass spectrometry) and position of the molecular weight markers are indicated on the right and left respectively. *Panel B*, Uniformly labeled *in vitro* transcript carrying the 3'-most 42 nucleotides of the *PGK1* mRNA was subjected to gel shift assay with BSA or increasing concentrations of Lsm1-7-Pat1 complex purified from wild type or *lsm1-14* cells. Phosphorimages of the gels and plots of the percentage of RNA bound (quantitated using phosphorimager) vs. the concentration of the complex used are shown on the top and bottom respectively.

A**B**