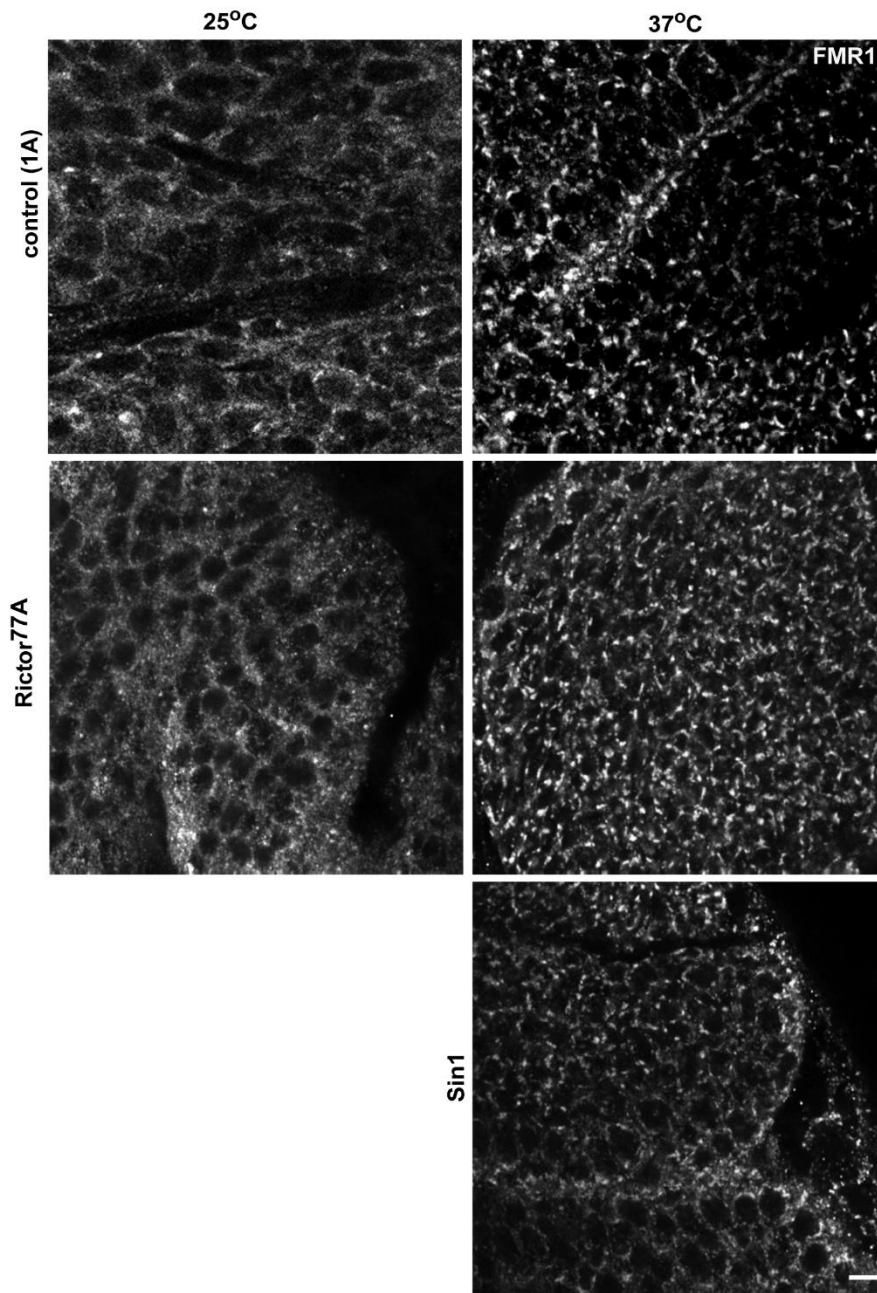


Suppl. Figure S1: TORC2 mutant flies are not sensitive to oxidative stress or starvation.

A: Quantitation of the sensitivity to oxidative stress (5% H₂O₂) of control flies (1A, n= 257), *Rictor^{77A}* (n=170) and *Rictor^{305A}* (n=175) expressed as the probability of surviving. p for *Rictor^{77A}* and 305A vs. control is not statistically significant.

B: Quantitation of the sensitivity to complete starvation of control flies (1A, n=313), *Rictor^{77A}* (n=148), *Rictor^{305A}* (n=241) expressed as probability of surviving. p-value for *Rictor* vs. control is p<0.001.



Suppl. Figure S2: Stress granule formation in larval brain does not appear to depend on TORC2. Immunofluorescence visualisation of FMR1 in larval brains after 2h at 26 and 37°C. Note that a pattern consistent with stress granule formation forms in heat stressed brains, but in control (1A), Rictor and Sin1 mutant to the same extent. Scale bar: 50um