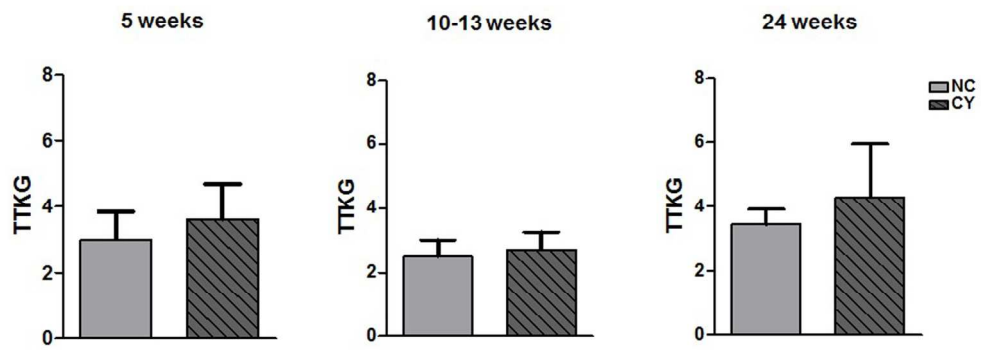


SUPPLEMENTAL DATA – FIGURE LEGENDS

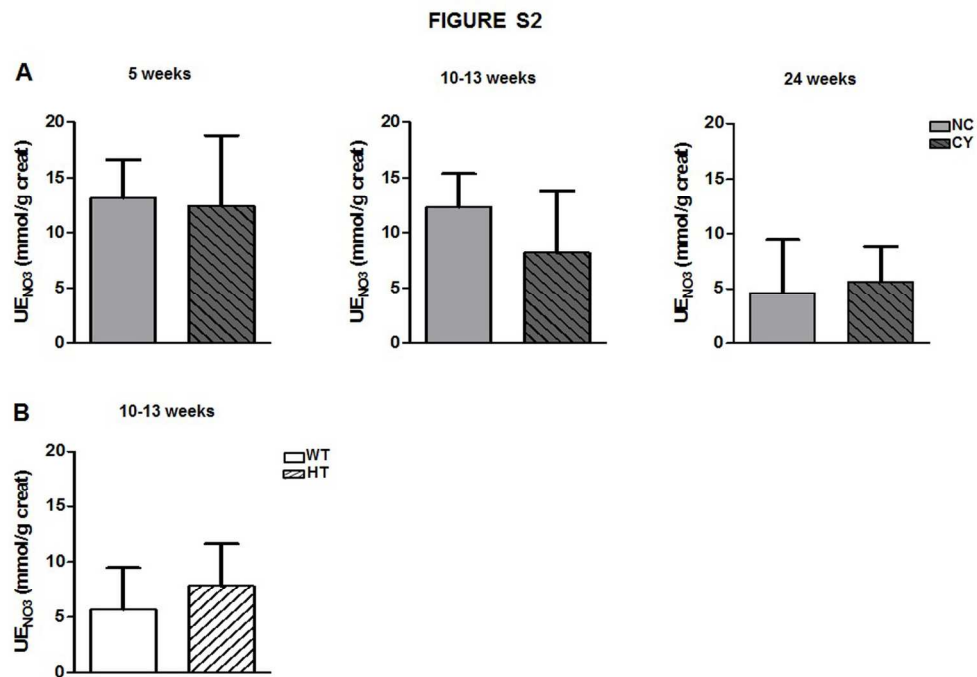
Figure S1. Comparative analysis of TTKG between NC and CY mice at the ages of 5, 10-13 and 24 wk. Comparison performed using the nonpaired *t* test, with data presented as mean±SD; n/group in Table 3.

Figure S2. (A) Comparative analyses of urinary excretion of nitrate between NC and CY mice at the ages of 5, 10-13 and 24 wk, and (B) between WT and HT mice at 10-13 wk. UE_{NO_3} was compared using the nonpaired *t* test and ANOVA, with the data presented as mean±SD; n/group in Table 5.

FIGURE S1



Comparative analysis of TTKG between NC and CY mice at the ages of 5, 10-13 and 24 wk. Comparison performed using the nonpaired t test, with data presented as mean±SD; n/group in Table 3.
234x105mm (300 x 300 DPI)



(A) Comparative analyses of urinary excretion of nitrate between NC and CY mice at the ages of 5, 10-13 and 24 wk, and (B) between WT and HT mice at 10-13 wk. UE_{NO₃} was compared using the nonpaired t test and ANOVA, with the data presented as mean±SD; n/group in Table 5.
258x177mm (300 x 300 DPI)