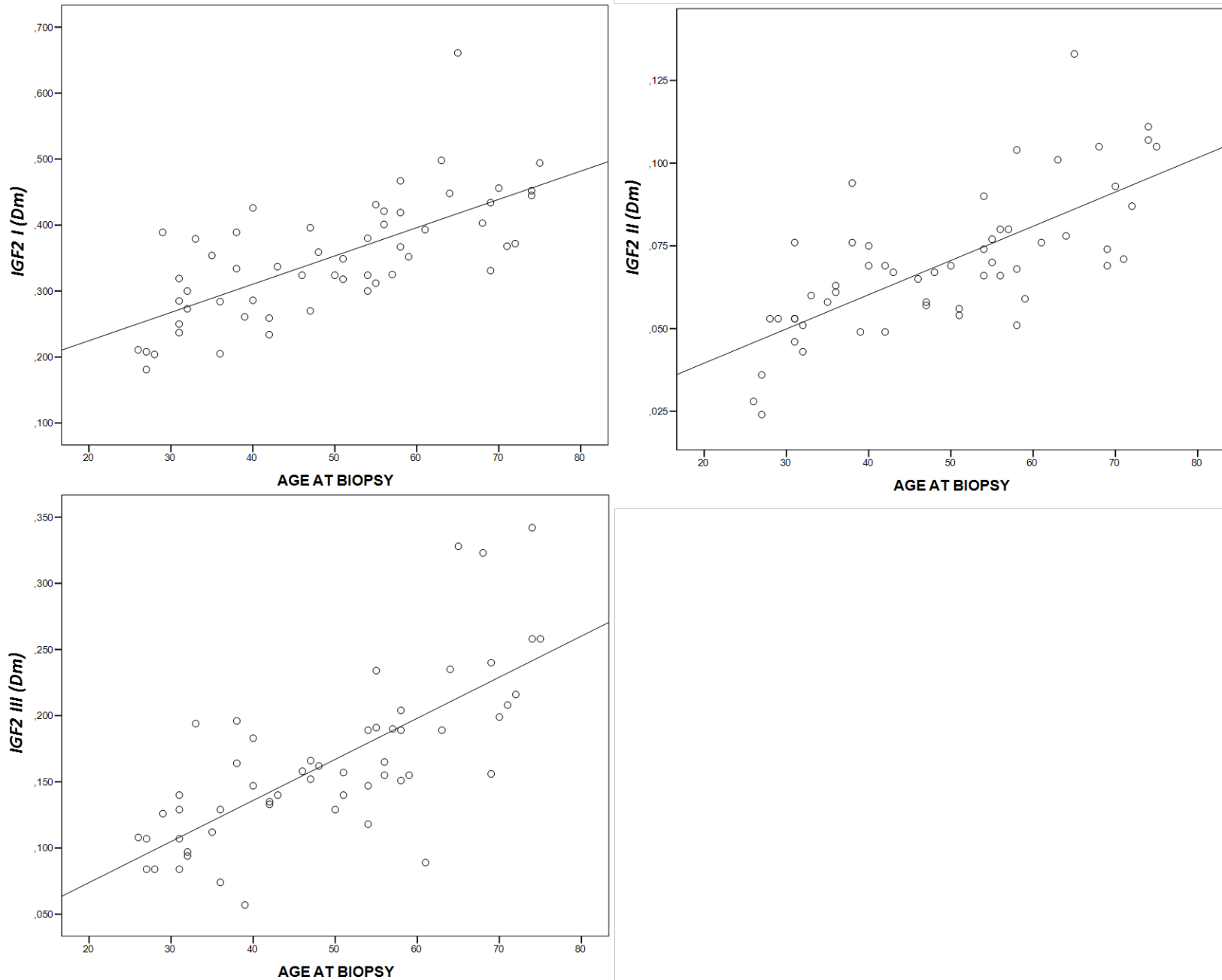
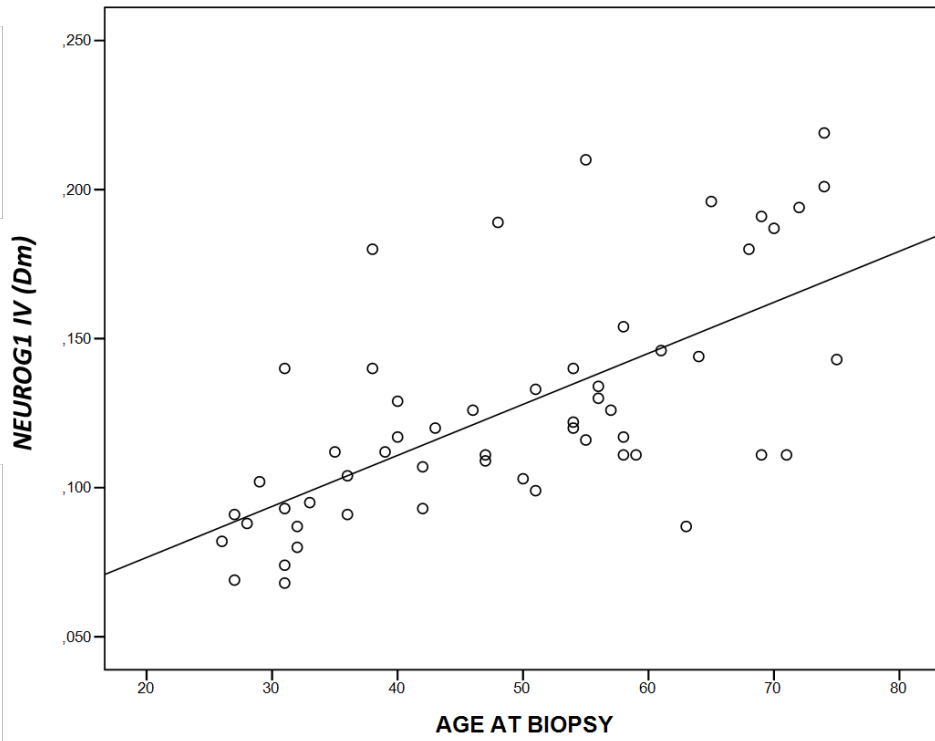
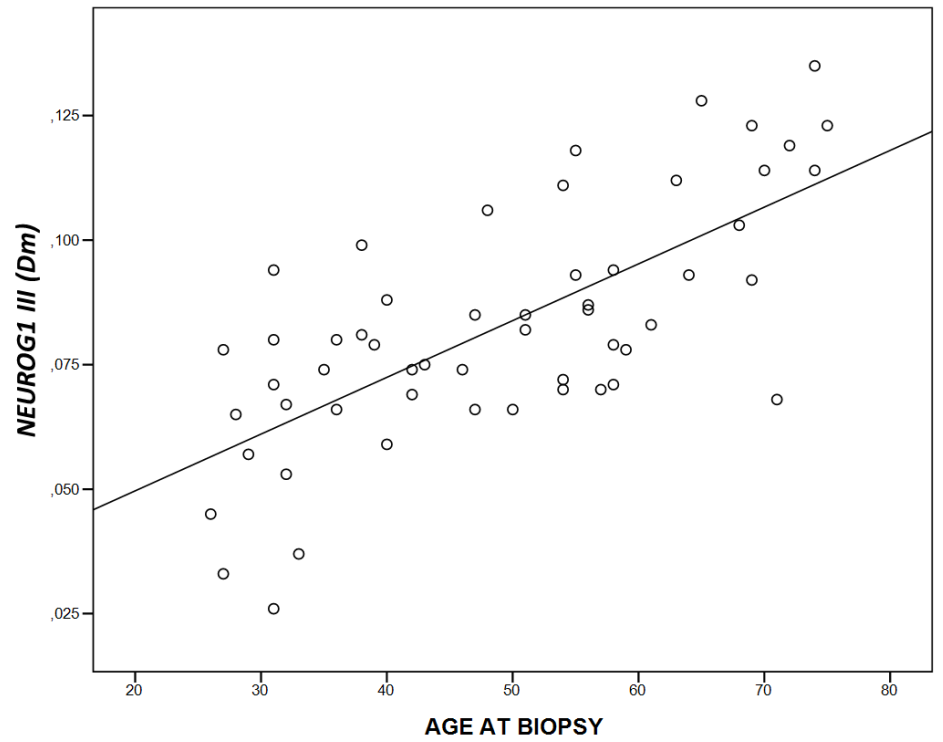
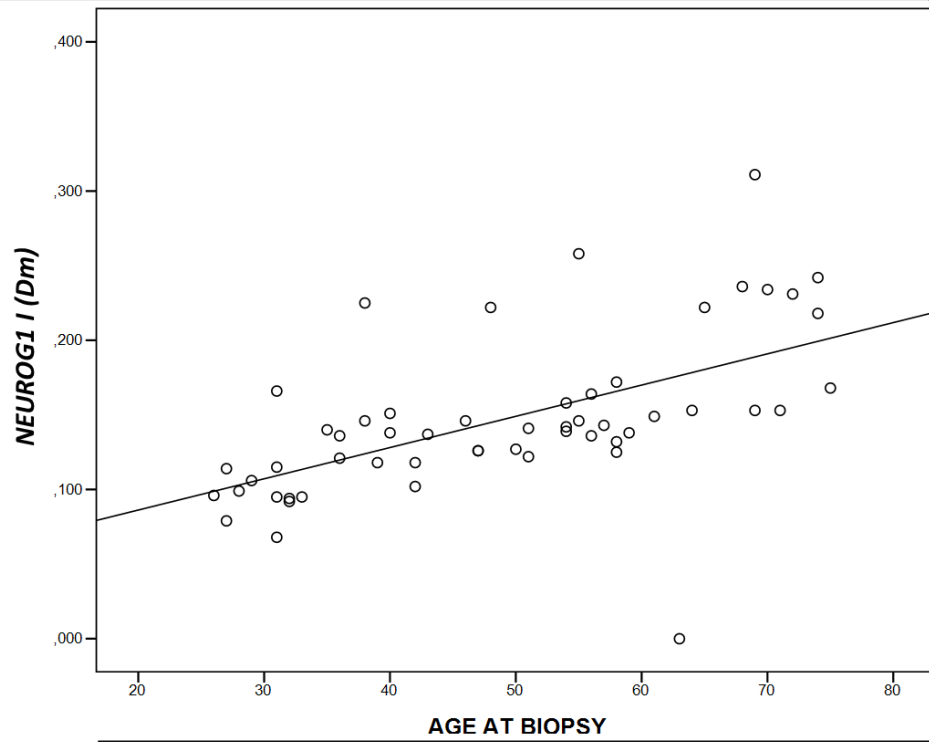


Suppl. Fig. 3. Correlation of age and normal colonic mucosa methylation. (A) Strong correlation between age at biopsy and normal mucosa *IGF2* probes I ($r=0.694$, $p<0.0001$), II ($r=0.726$, $p<0.0001$) and III ($r=0.742$, $p<0.0001$) Dm values. **(B)** Strong correlation between age at biopsy and normal mucosa *NEUROG1* probes I ($r=0.566$, $p<0.0001$), III ($r=0.703$, $p<0.0001$) and IV ($r=0.655$, $p<0.0001$) Dm values. **(C)** Moderate correlation between age at biopsy and normal mucosa *SFRP1* ($r=0.554$, $p<0.0001$), *SFRP2* ($r=0.550$, $p<0.0001$) and *SLC5A8* ($r=0.554$, $p<0.0001$) Dm values.

A.



B.



c.

