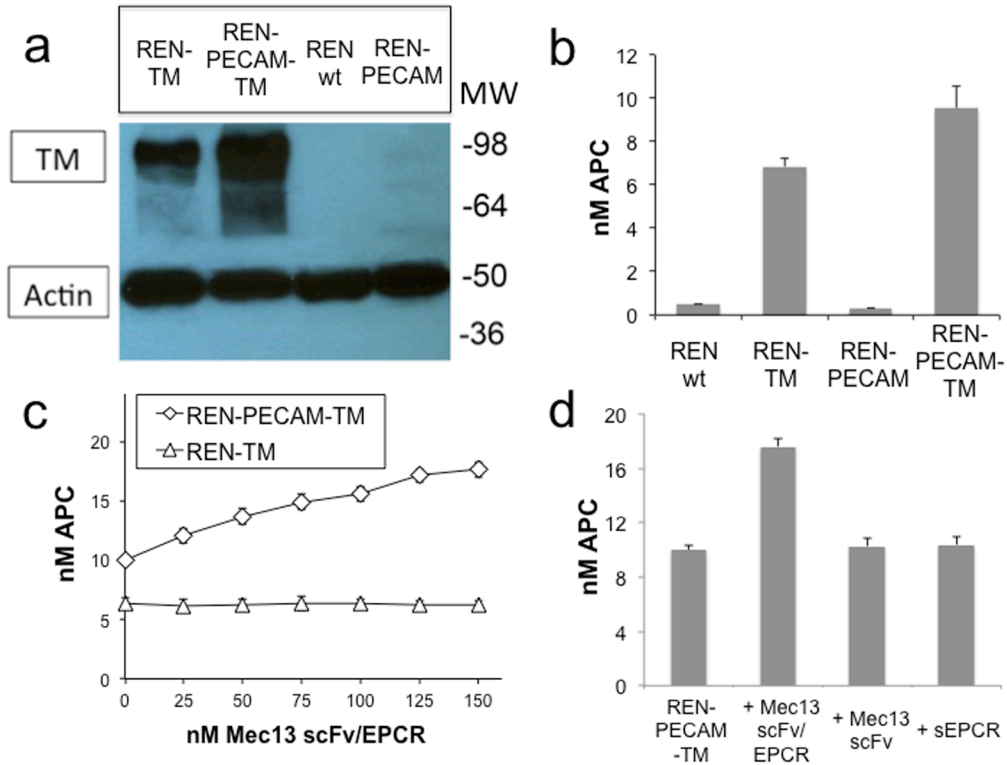


Supplemental Figure 2:



Supplemental Figure 2. Functional Activity of Mec13 scFv/EPCR fusion protein. Generation and characterization of REN-PECAM-TM and REN-TM cells. (a) Expression of mouse TM was confirmed by western blotting. (b) Protein C activation assay was used to confirm surface localization and functional activity of expressed TM. Consistent with the results of western blotting, REN-PECAM-TM cells appear to express more TM per cell than REN-TM cells, resulting in greater protein C activation at baseline. (c) Mec13 scFv/EPCR enhances protein C activation by surface expressed TM on REN-PECAM-TM cells. No effect is seen on REN-TM cells, to which the fusion does not bind. (d) Likewise, Mec13 scFv and sEPCR (each 150nM) have no effect on APC generation on REN-PECAM-TM cells.