

Fig S1. Schematic representation of GST-tagged APP and Syt-1 ectodomain

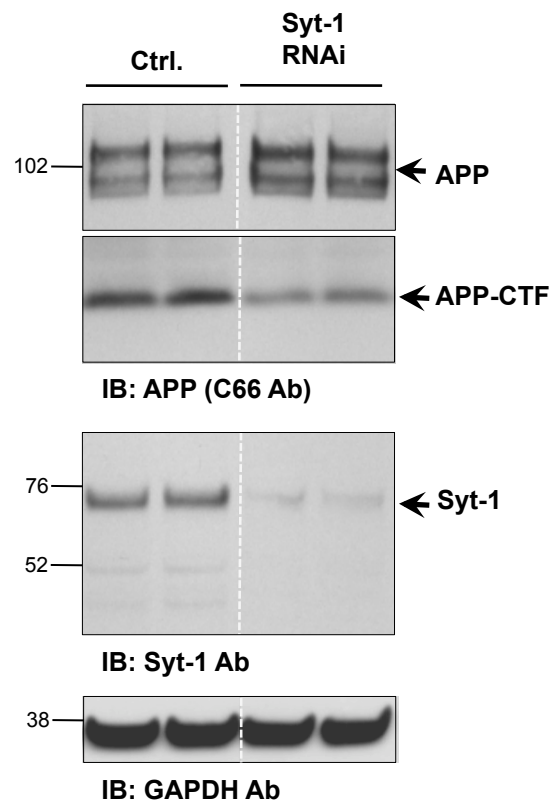


Fig S2. Syt-1 siRNA decreases endogenous APP CTF levels in PC12 cells

Supplementary Figure Legends

Figure S1. Schematic representation of GST-tagged APP and Syt-1 ectodomain

(S1A) Schematic diagram of APP structure (*top*) and GST-tagged APP ectodomain (*bottom*) constructs used in MS-based identification of APP-interacting proteome from mouse brain.

(S1B) Schematic representation of Syt-1 structure (*top*) and GST-tagged Syt-1 N-terminal (luminal region) construct.

Figure S2. Syt-1 siRNA decreases endogenous APP-CTF levels in PC12 cells

Western blot analysis of PC12 cells transiently transfected with Syt-1 specific siRNA shows lower APP-CTF levels as compared to the control cells. Top panel shows full-length APP and APP-CTF levels while bottom panel shows Syt-1 expression. GAPDH staining was used for equal protein loading.