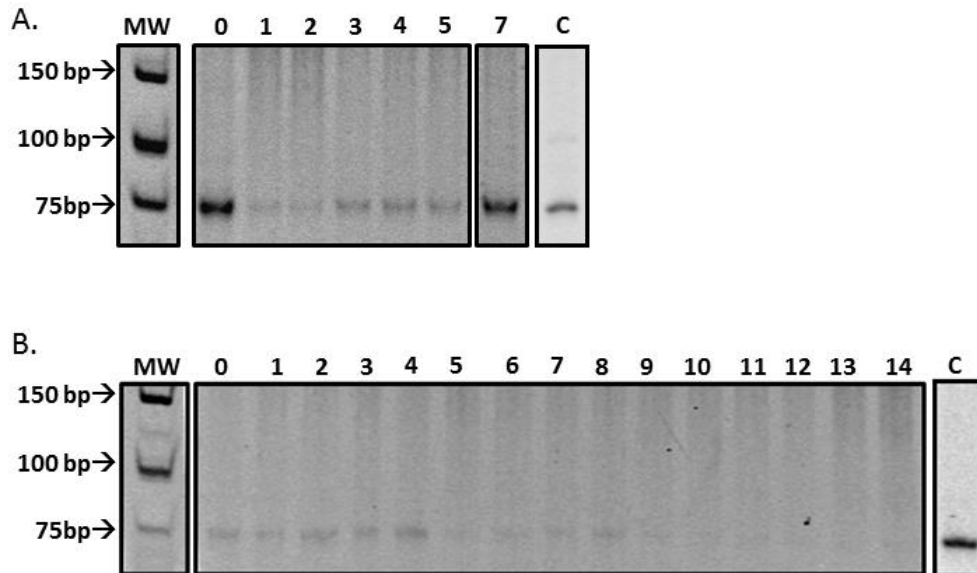


### ***MSH3* microcolony time courses starting with unexpanded CTG tracts**



**Figure S8. Unexpanded TNR tracts are stable starting from a single cell.** Two examples of microcolony time courses starting with *unexpanded* tracts in a *MSH3* (*CTG*)<sub>25</sub> background. Tract sizes were confirmed by PCR. Individual cells from these colonies were isolated and allowed to undergo 8-10 rounds of replication, resulting in a microcolony approximately 250-1000 cells in size. A single cell was then taken from this microcolony to propagate another microcolony. The remainder was used to amplify the TNR tract by PCR to determine tract length (see **Fig. 10** for cartoon). No tract changes were observed. Both gels are 12% polyacrylamide gels stained with EtBr; the images of been inverted for ease of viewing. The lanes marked **C** in each panel indicate the 75bp tract amplified from the TNR plasmid control.

The numbers across the top of the gels indicate the time point. A mutation rate for these experiments was calculated and is shown in **Table 1**.