

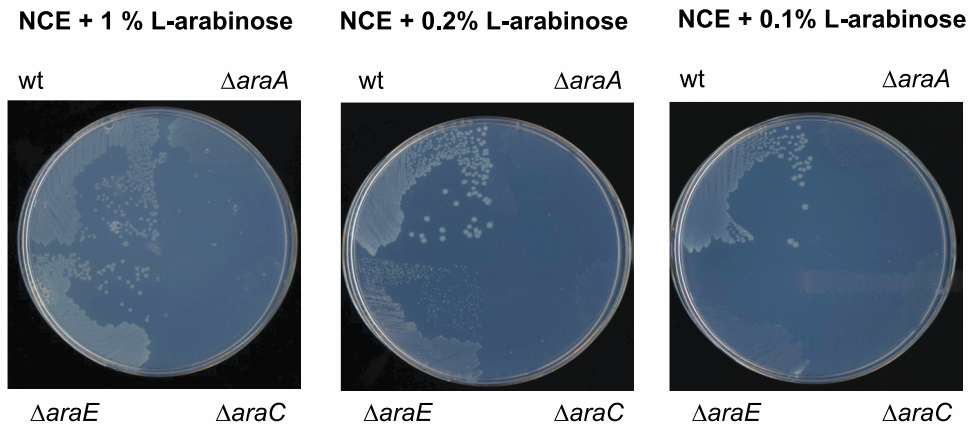
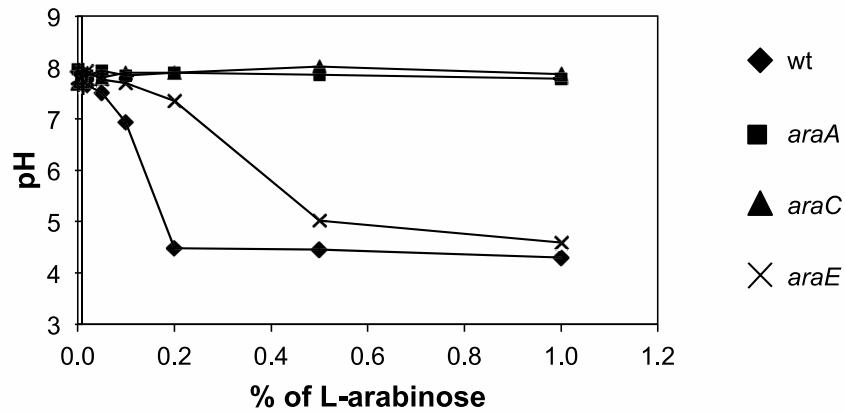
A**B**

Figure S3 Phenotypes associated with *araA*, *araC*, and *araE* mutations. **A.** Growth of the wild type, $AraA^-$, $AraC^-$, and $AraE^-$ strains on minimal agar with 1%, 0.2% or 0.1% L-arabinose as sole carbon source. **B.** pH curves of the wild type, $AraA^-$, $AraC^-$ and $AraE^-$ strains.