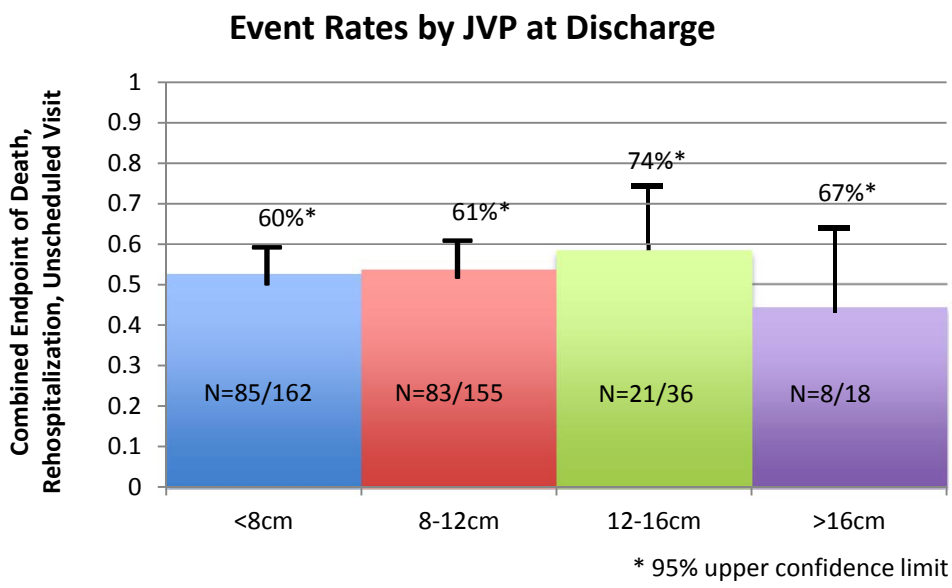
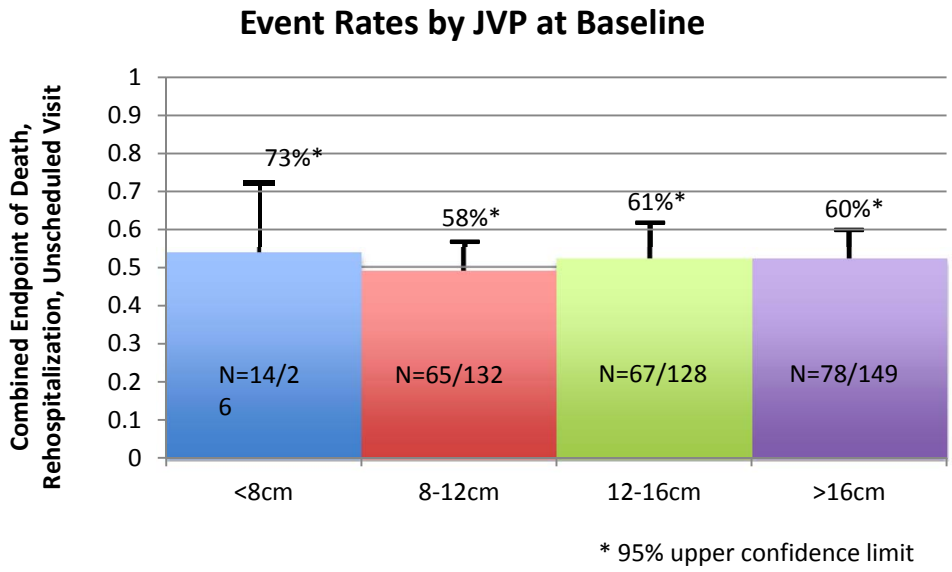
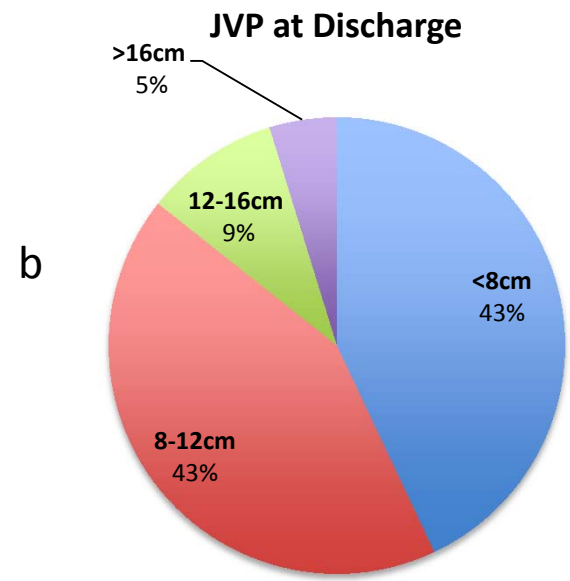
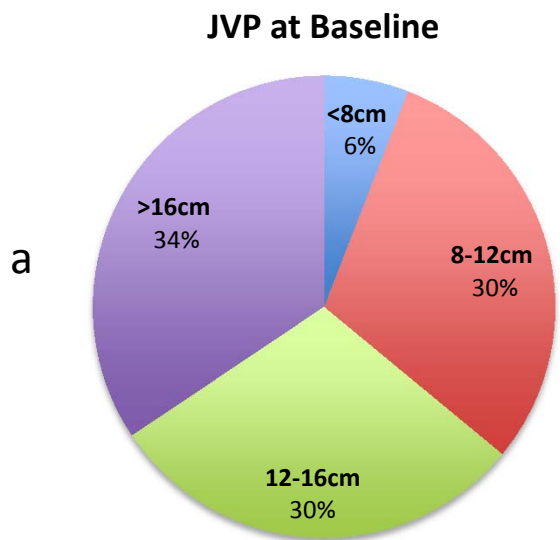
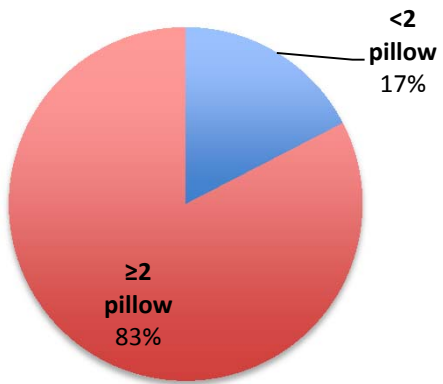


Supplemental Figure 1: Relationship of Jugular venous pressure (JVP) to event rates at baseline (a) and discharge (b)

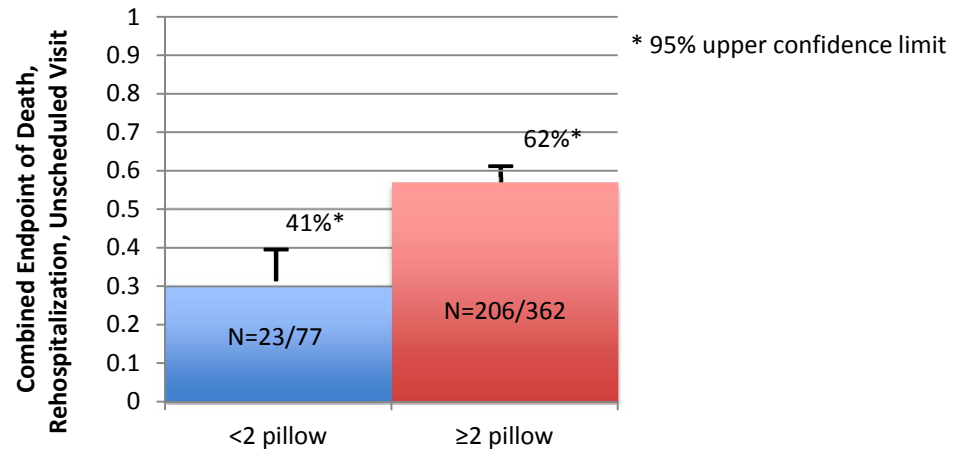


Supplemental Figure 2a: Relationship of orthopnea and edema at baseline to event rates

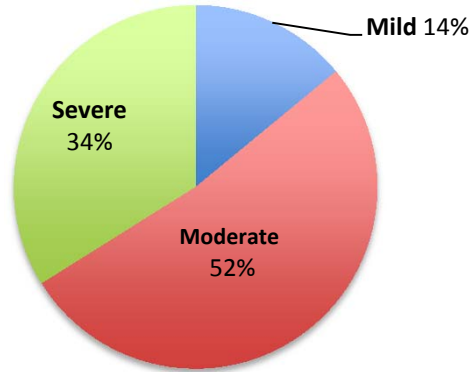
Orthopnea at Baseline



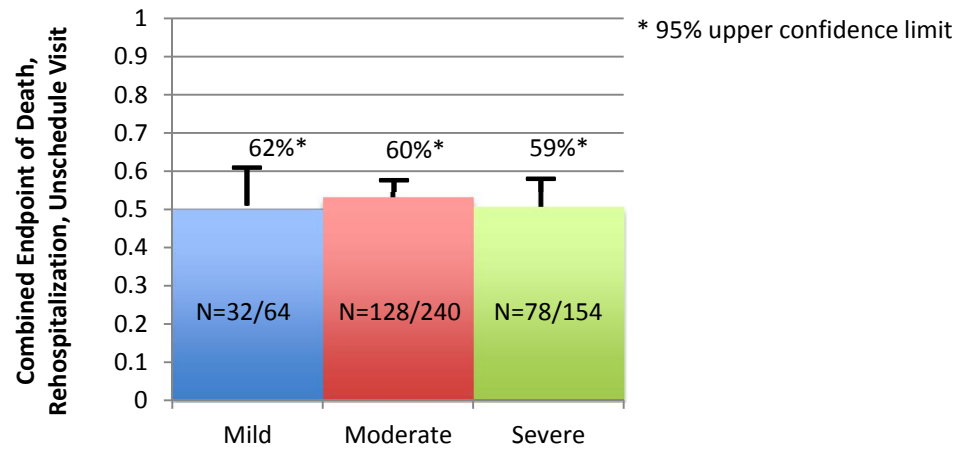
Event Rates by Orthopnea at Baseline



Edema at Baseline

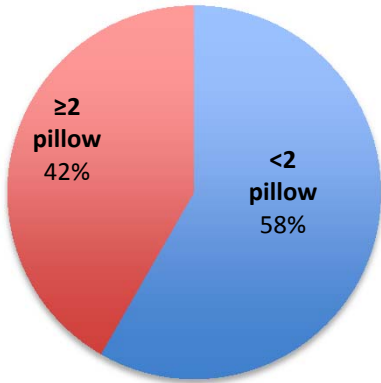


Event Rates by Edema at Baseline

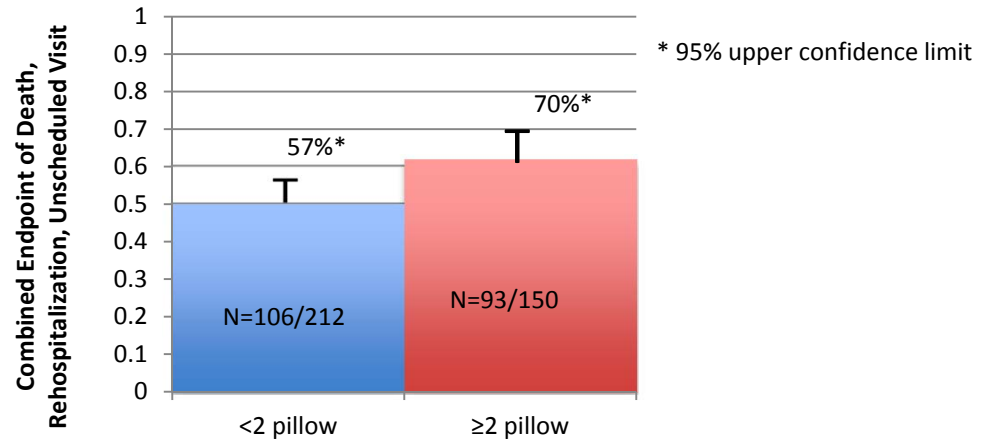


Supplemental Figure 2b Relationship of orthopnea and edema at discharge to event rates

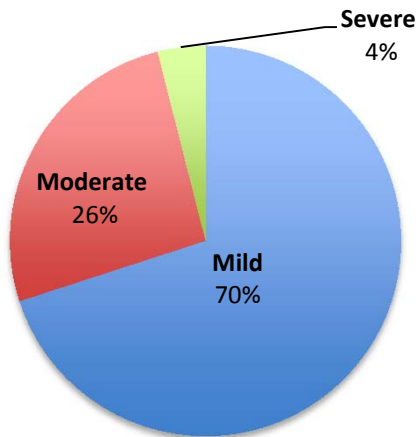
Orthopnea at Discharge



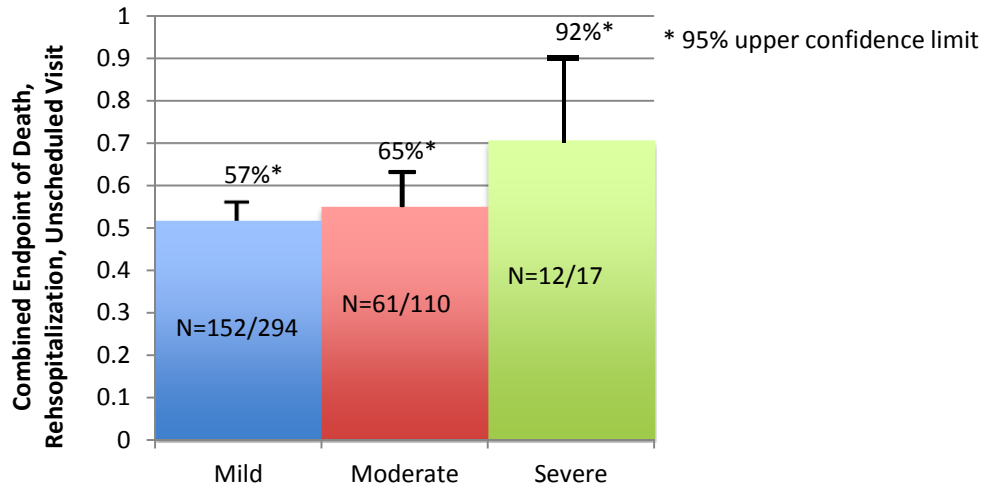
Event Rates by Orthopnea at Discharge



Edema at Discharge



Event Rates by Edema at Discharge



NHLBI Heart Failure Network Steering Committee Members

Name	Title	Affiliation
Eugene Braunwald	Study Chairman	Harvard University
Monica Shah	Program Officer	NHLBI
Patrice Desvigne-Nickens	Deputy Program Officer	NHLBI
Kevin Anstrom	Principal Investigator	Duke University (Coordinating Center)
Adrian Hernandez	Principal Investigator	Duke University (Coordinating Center)
Thomas Cappola	Principal Investigator	University of Pennsylvania
Kenneth Margulies	Principal Investigator	University of Pennsylvania
Wilson Tang	Principal Investigator	Cleveland Clinic Lerner College of Medicine - CWRU
Randall Starling	Principal Investigator	Cleveland Clinic Lerner College of Medicine –CWRU*
G. Michael Felker	Principal Investigator	Duke University Medical Center
Michael Givertz	Principal Investigator	Brigham and Women’s Hospital
Marc Semigran	Principal Investigator	Massachusetts General Hospital

Margaret M. Redfield	Principal Investigator	Mayo Clinic Rochester
Victor Davila-Roman	Principal Investigator	Washington University
Douglas Mann	Principal Investigator	Washington University
David Whellan	Principal Investigator	Thomas Jefferson University
Peter VanBuren	Principal Investigator	University of Vermont-Fletcher Allen Health Care
Gordon Huggins	Principal Investigator	Tufts New England Medical Center
Andrew Smith	Principal Investigator	Emory University