

Fig. S5

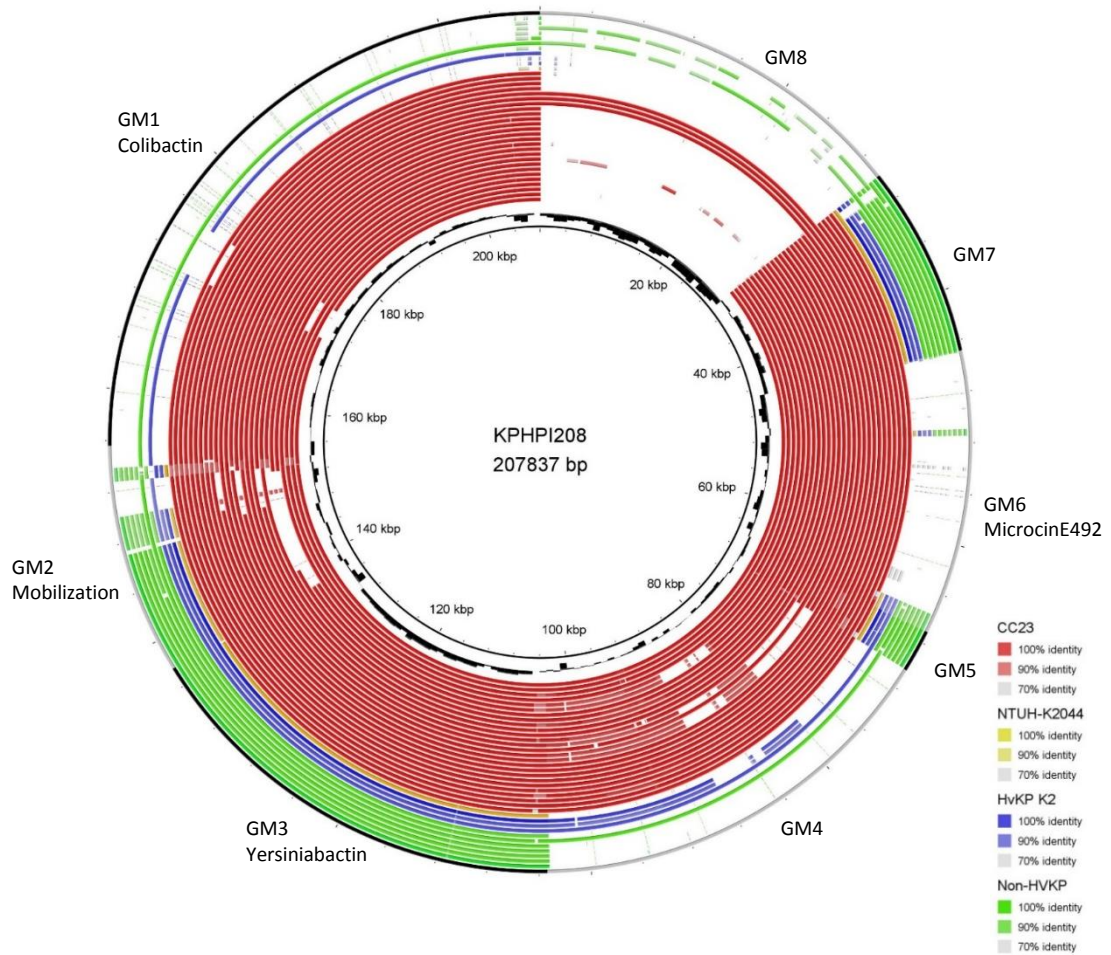


FIG S5 BLASTN atlas illustrating the presence of the different genomic modules (GM1-8) of KPHPI208 in hypervirulent and non-hypervirulent *K. pneumoniae* isolates. Red rings are the CC23 related isolates from in to out CAS683, CAS685, CAS686, CAS687, CAS690, CAS691, CAS694, CAS695, CAS698, CAS699, CAS701, CAS726, CAS727, CAS813, CAS951, CAS983, CAS984, CAS985, CAS986, CAS987, CAS988, CAS989, CAS990, CAS991, and CAS992. The orange ring is NTUH-K2044. Blue rings are from in to out the hypervirulent K2 isolates CAS688, hvKP1, and Kp52.145. Green rings are from in to out the non-hypervirulent isolates TG12354, TG21545, TG21982, TG28459, SB2390, HS11286, and Kp13.