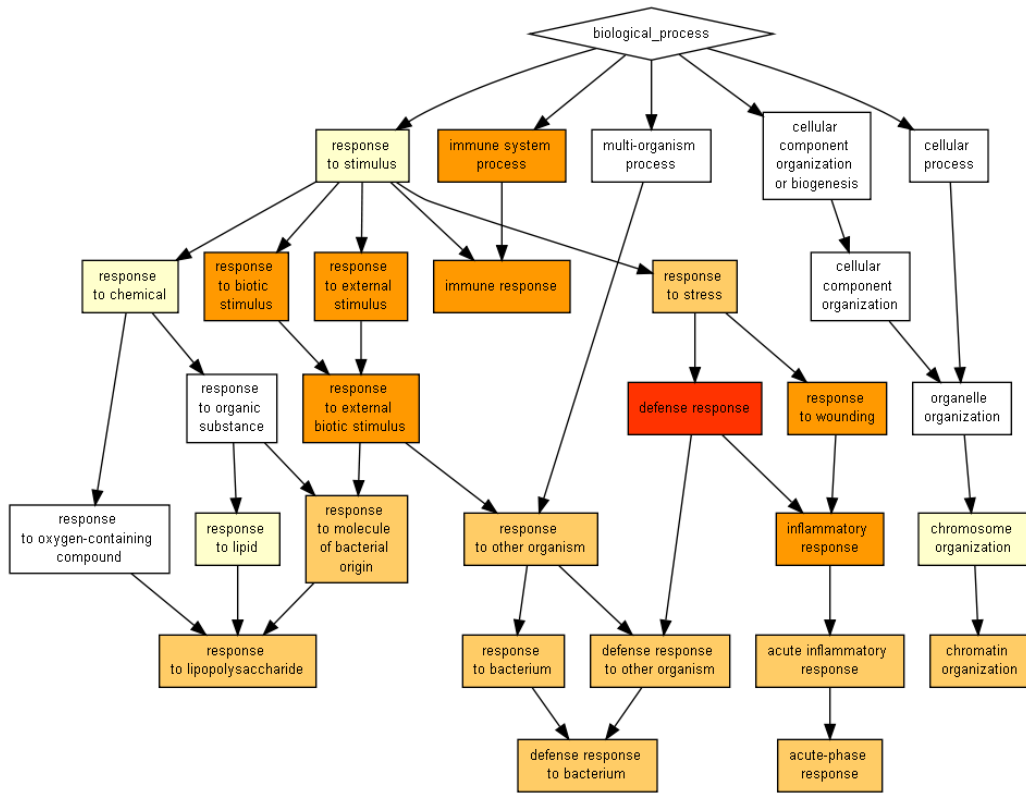


Supplementary Figure 1: Peripheral blood gene expression differentiates *Maf*- and *Mtb*-infected patients post-treatment. Volcano plot illustrating significant differentially expressed genes (coloured red) between *Maf*- and *Mtb*-infected groups post-treatment. No fold change cutoff was set.



Supplementary Figure 2: The GO enrichment of the genes correlated to serum arabinose concentration.

The list of genes significantly correlated with serum arabinose concentration was analyzed using GOrilla for enrichment of biological processes. False detection rate (FDR) shows the significant enrichment of the processes: Red indicates q -value $< 10^{-6}$; dark orange, $q < 10^{-4}$; orange, $q < 10^{-2}$; yellow and white, q not significant.