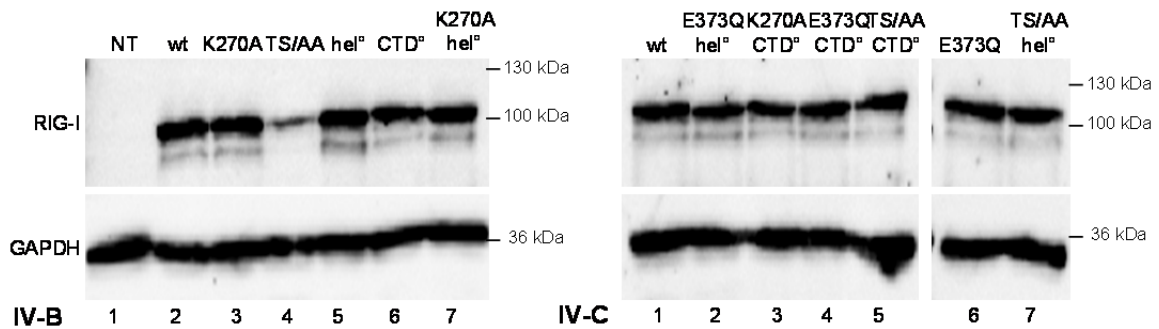
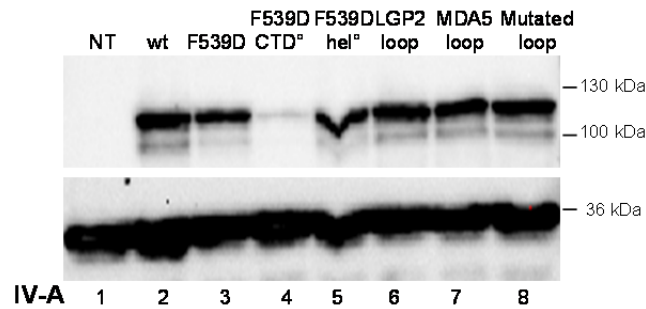
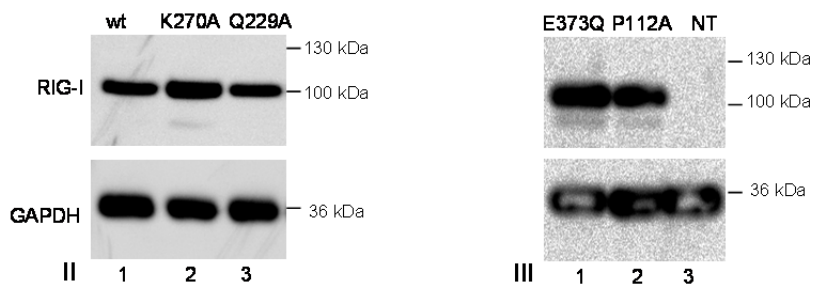
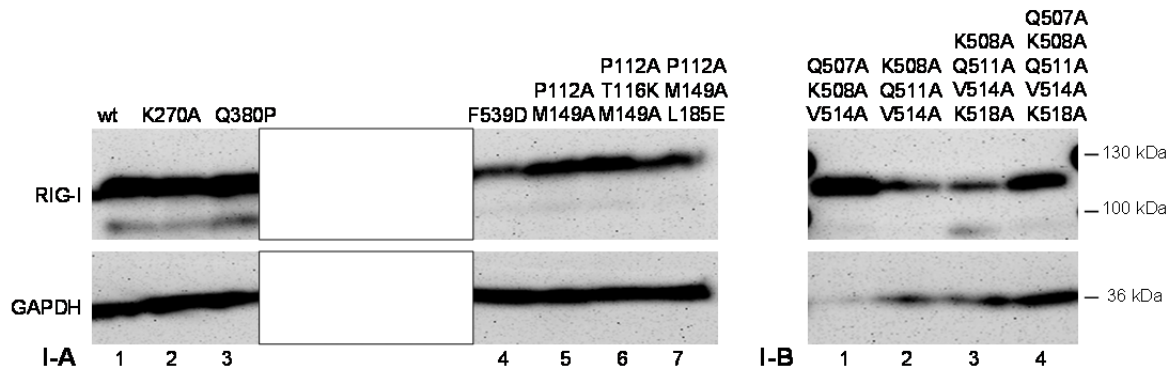
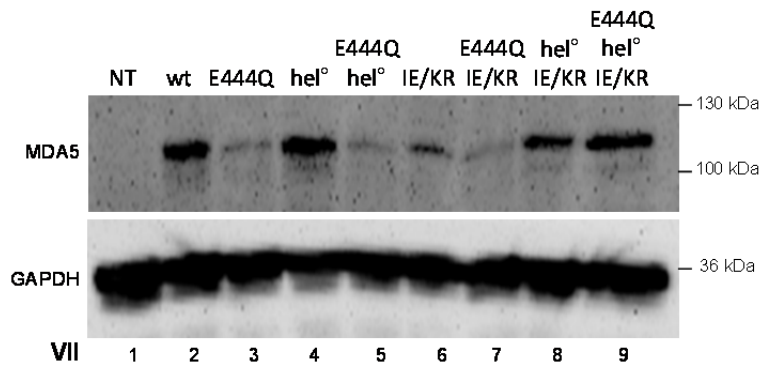
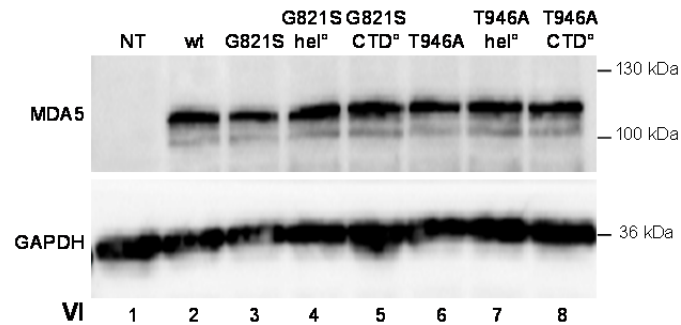
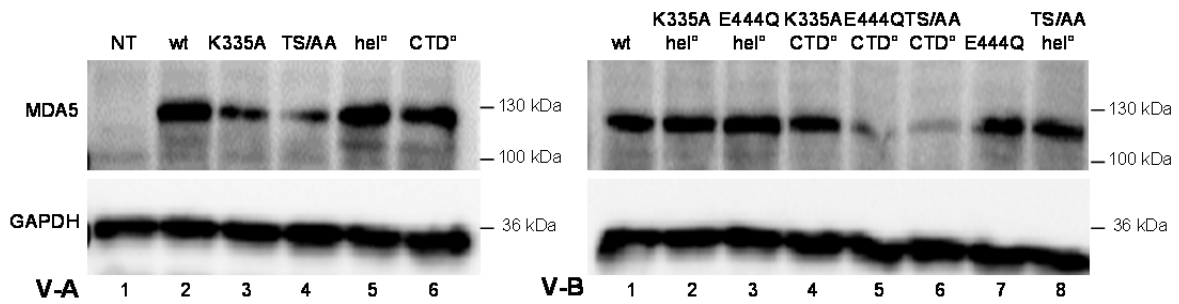


Additional file 2





33 **Figure AF2. Protein expression levels of each RIG-I and MDA5 constructs used in figure 1, 2 and 3.**
 34 *Analysis was performed in 7 western blots (I-VII) with one, two (A,B) or three PVDF membranes*
 35 *revealed simultaneously by luminescence. For each cell extract, the PVDF membrane was cut into*
 36 *upper (to detect RIG-I and MDA5) and lower parts (the latter to blot GAPDH as a marker of total cell*
 37 *protein load). Since all protein constructs could not be physically analysed on the same blot and the*
 38 *same day, a lane showing the expression of either RIG-I or MDA5 wt construct (or in some case*
 39 *another construct already analysed in another western blot) performed in the same expression*
 40 *experiment was always included for comparison as was a lane dedicated to the molecular mass*
 41 *markers. For gel IA, the hidden part of the gel corresponds to the analysis of other protein variants*
 42 *not used in this work.*