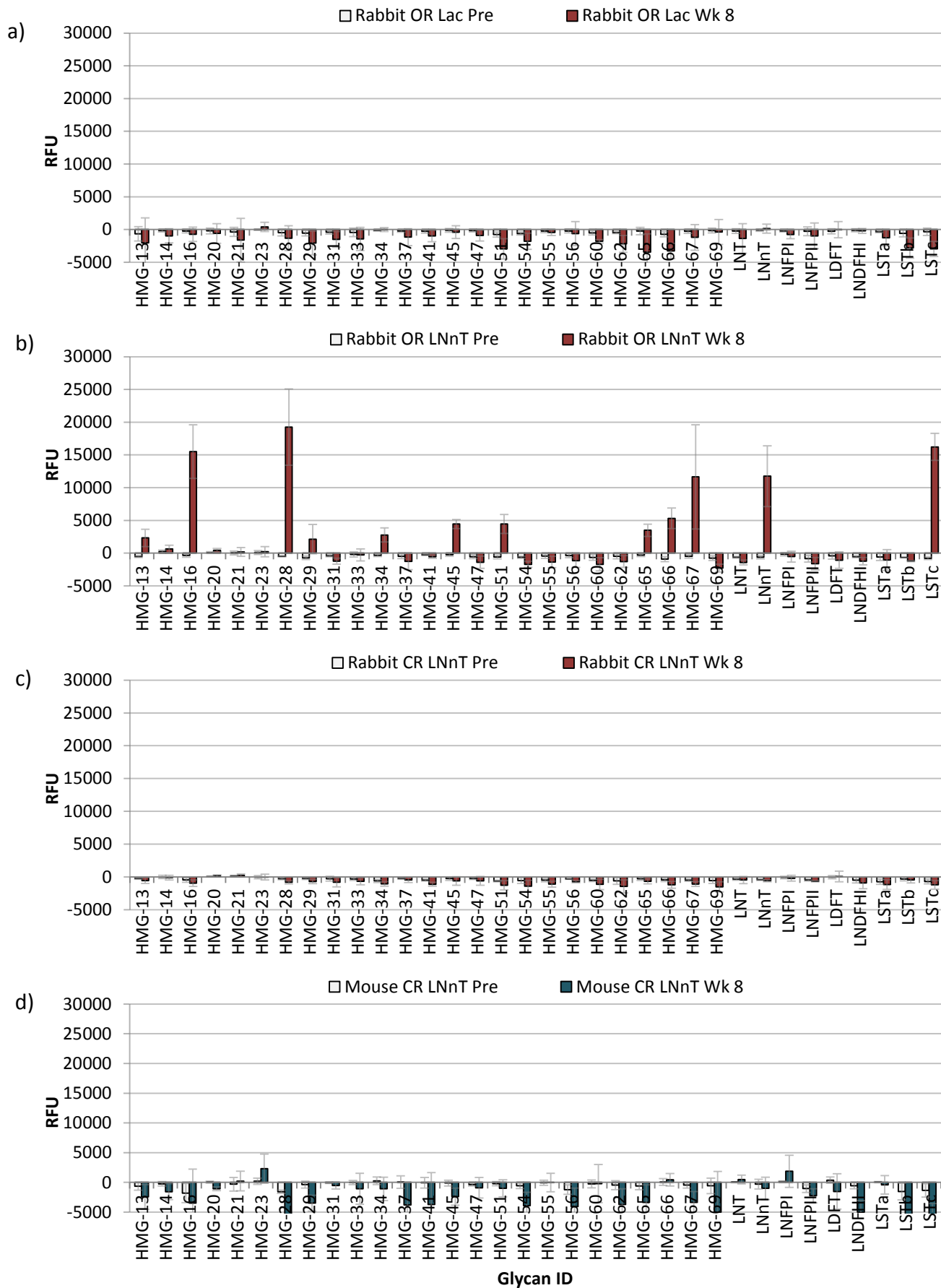


LNnT-BSA manuscript

Supplemental Figure



Prasanphanich *et al.* Supplemental Table

Glycan ID	Average RFU	Structure	Glycan ID	Average RFU	Structure
HMG-28	19268		HMG-33	-263	
LSTc	16228		LNFP1	-530	
HMG-16 (LNnH)	15508		HMG-41	-533	
LNnT	11760		LSTa	-1052	
HMG-67	11653		LDFT	-1067	
HMG-66	5328		HMG-56	-1154	
HMG-51	4452		LSTb	-1201	
HMG-45	4447		HMG-31	-1219	
HMG-65	3509		LNDFHI	-1222	
HMG-34	2785		HMG-37	-1263	
HMG-13 (para-LNH)	2329		HMG-62	-1273	
HMG-29 (iso-FLNH I)	2140		HMG-55	-1352	
HMG-14 (para-LNnH)	655		HMG-47	-1390	
HMG-20	448		LNT	-1415	
HMG-23 (iso-FLNH III)	229		LNFP2	-1619	
HMG-21	191		HMG-60	-1696	
			HMG-54	-1700	
			HMG-69	-2276	

■ Human milk glycans defined in Yu et al. (2014)

■ Control glycans

□ LNnT (or internal LNnT core)

□ LNT (or internal LNT core)

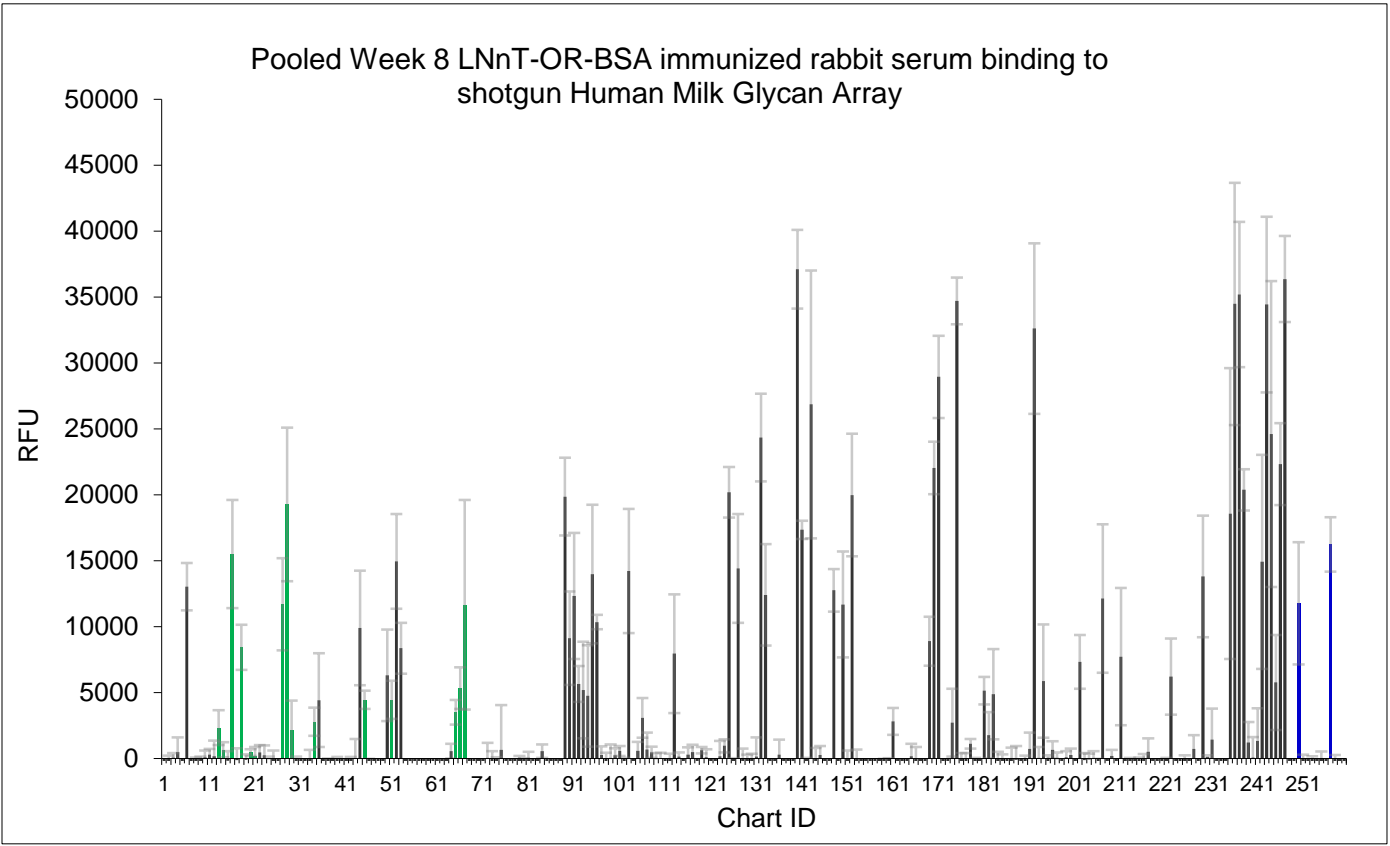
◆ Sialic Acid

● Galactose

■ GlcNAc

● Glucose

▲ Fucose



- Human milk glycans defined in Yu et al. (2014)
- Control glycans
- Undefined human milk glycans bound by rabbit LNnT-OR-BSA immune sera