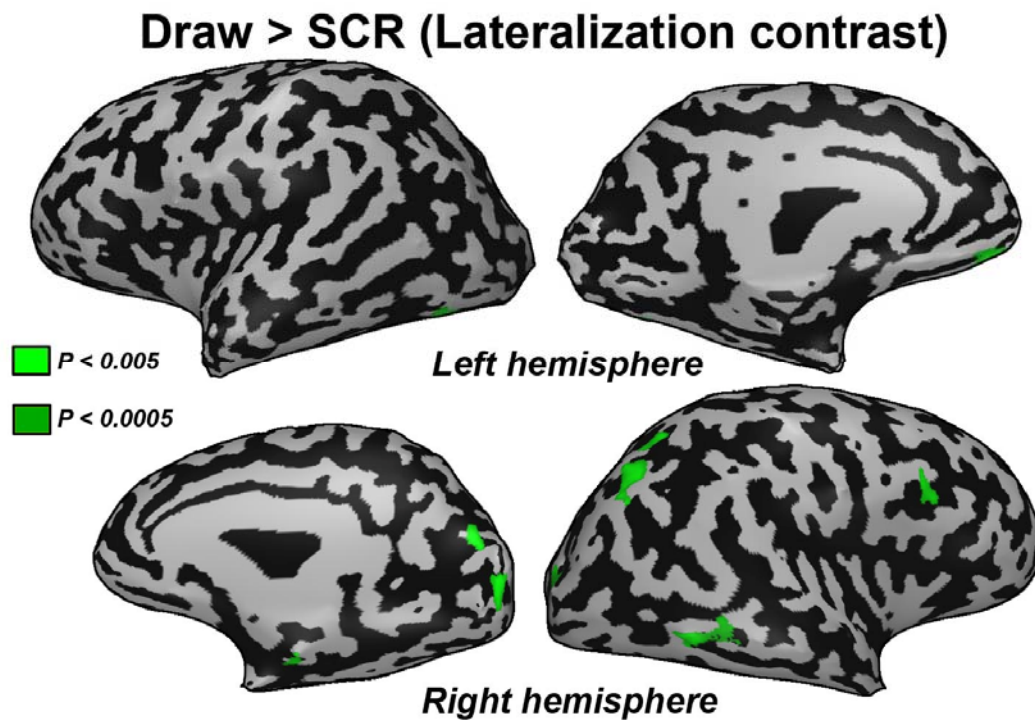


Supplementary data

Supplementary figure 1



We have conducted a hemispheric symmetry analysis using the following standard procedure (see also Amedi et al. Nat Neurosci. 2003 for a similar analysis and description of methods): the volume time course was flipped along the X axis and we contrasted the regular with the mirror X symmetry volume time courses (VTCs, after spatial smoothing with a kernel of 6mm). Areas showing similar levels of activation in both hemispheres are subtracted out using this procedure, whereas areas showing high levels of hemispheric specialization reveal strong activation in the preferred hemisphere. Using this approach, we found significant right hemispheric preference in several areas in occipital cortex as well as one cluster in IPS and PF cortex.