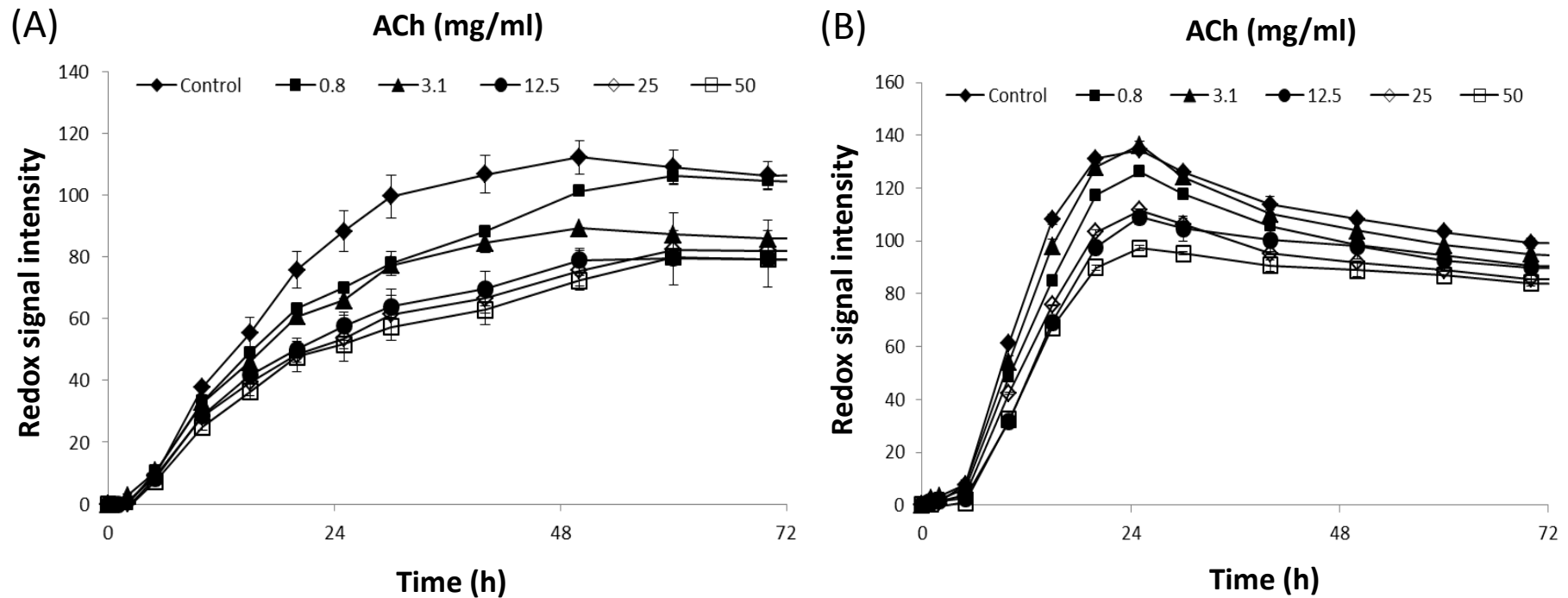
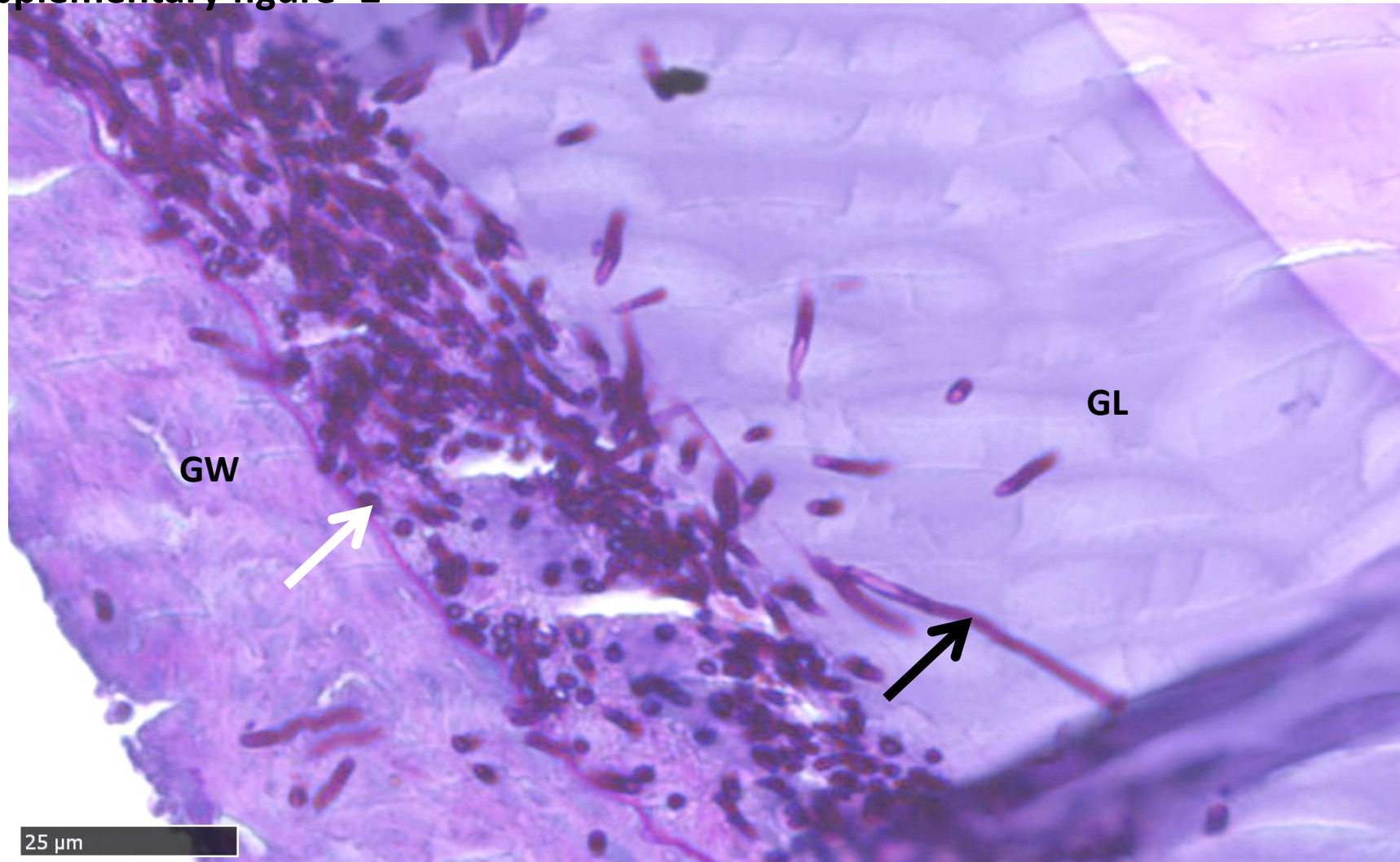


## Supplementary figure -1



**Supplementary Figure 1: Phenotypic microarray analysis of *C. albicans* metabolism during culture in RPMI and YNB. Changes in *C. albicans* respiration during culture in YNB (A) and RPMI (B) over 72 h in the presence of different concentrations of ACh (0-50 mg/L).**

## Supplementary figure -2



**Supplementary Figure 2: *Candida albicans* infection of *Galleria mellonella* induces hyphal invasion of the gut wall and lumen** Histological analysis of larvae was performed using periodic acid–Schiff (PAS) staining 48 h post inoculation. Intraparietal and intraluminal localization of yeast cells (white arrow) and hyphae (black arrow) in the gut of *Candida albicans* alone inoculated larvae are highlighted. The image is representative of histological analysis of 3 larvae from 3 independent experiments. GW = gut wall and GL= gut lumen. Scale bars: 25 μm.