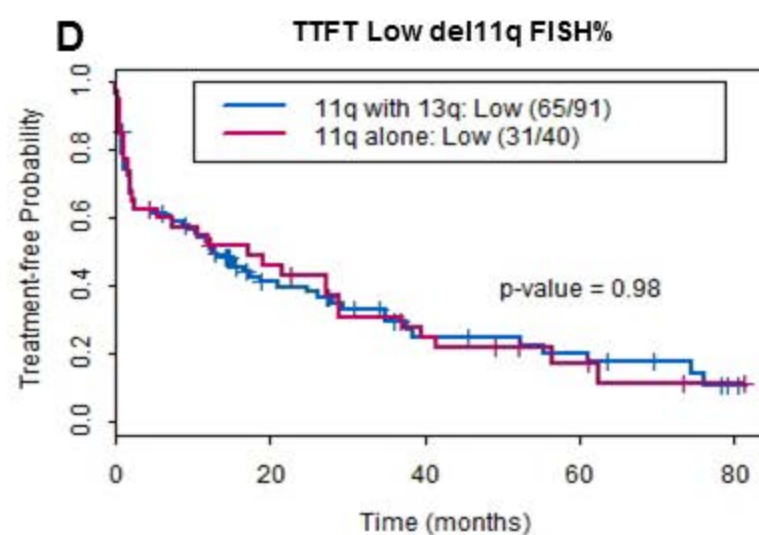
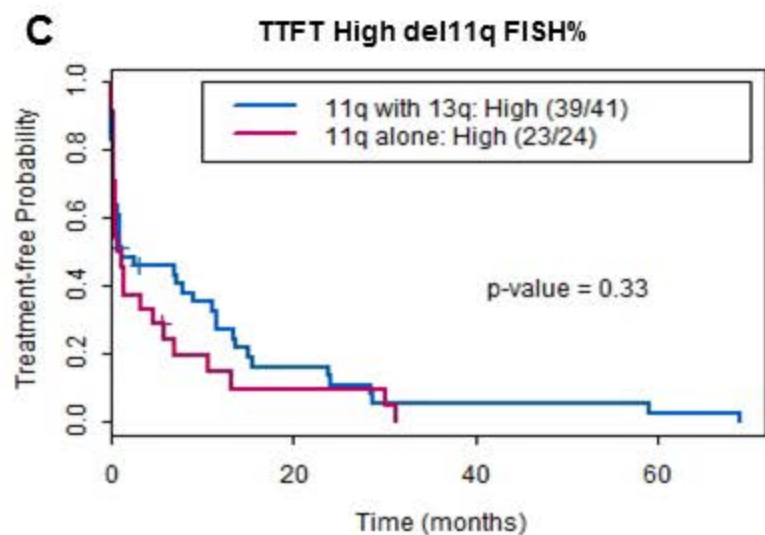
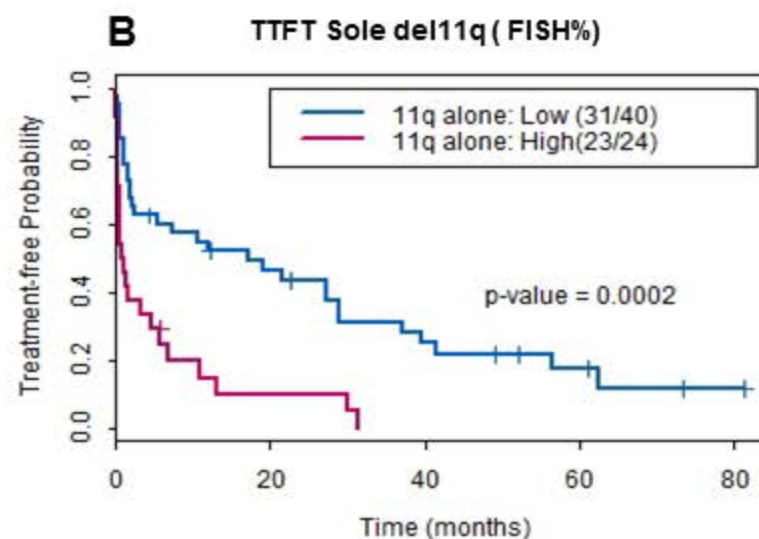
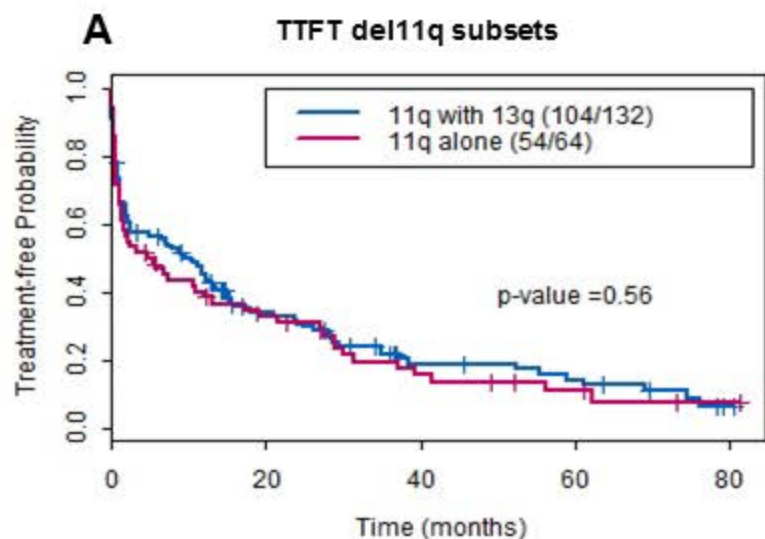
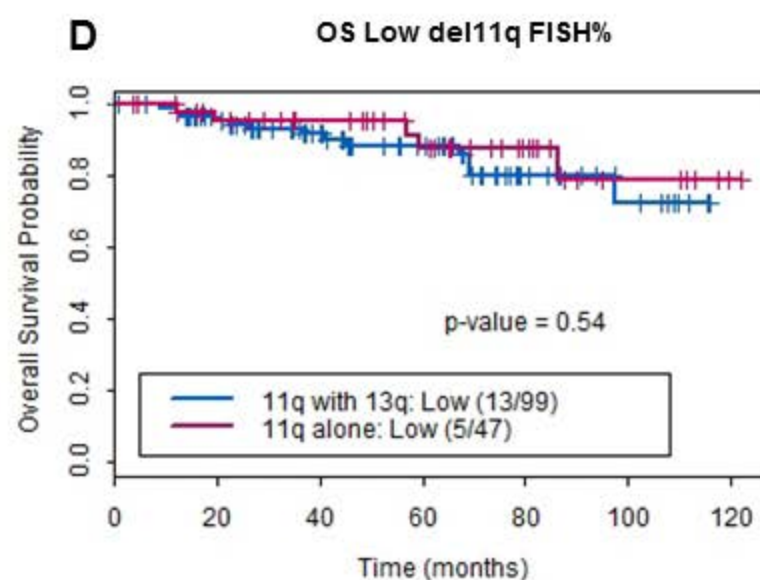
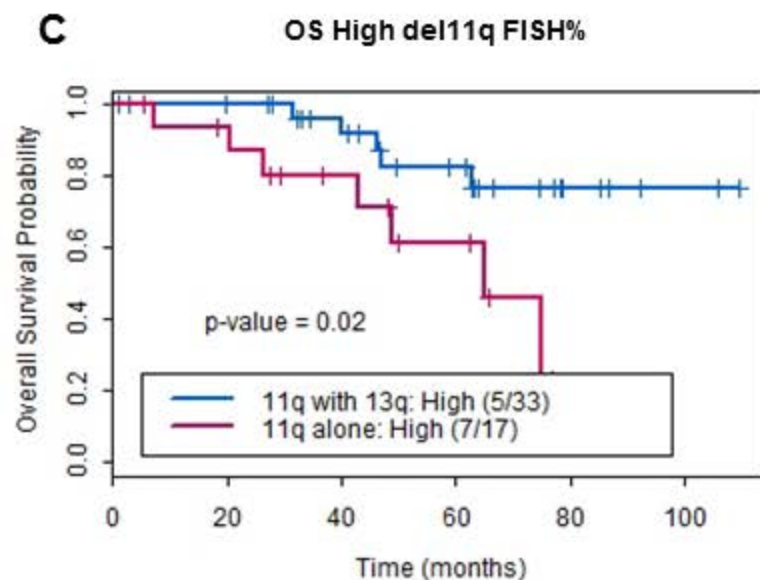
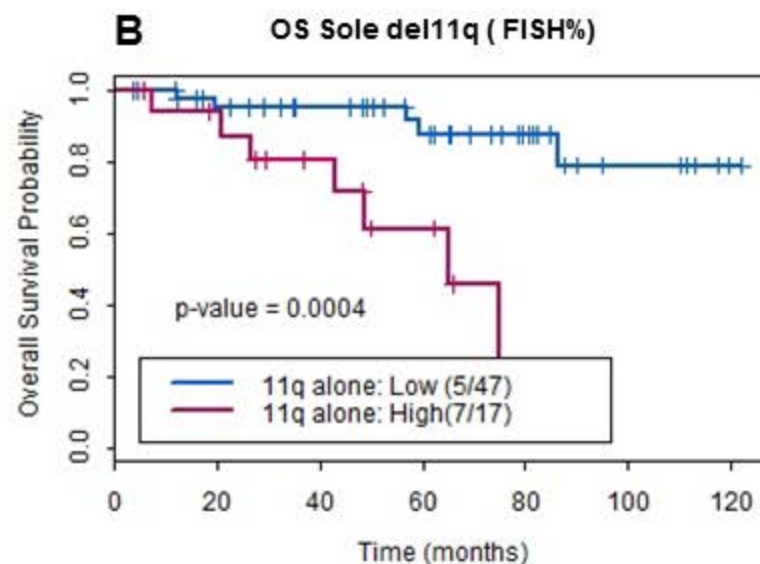
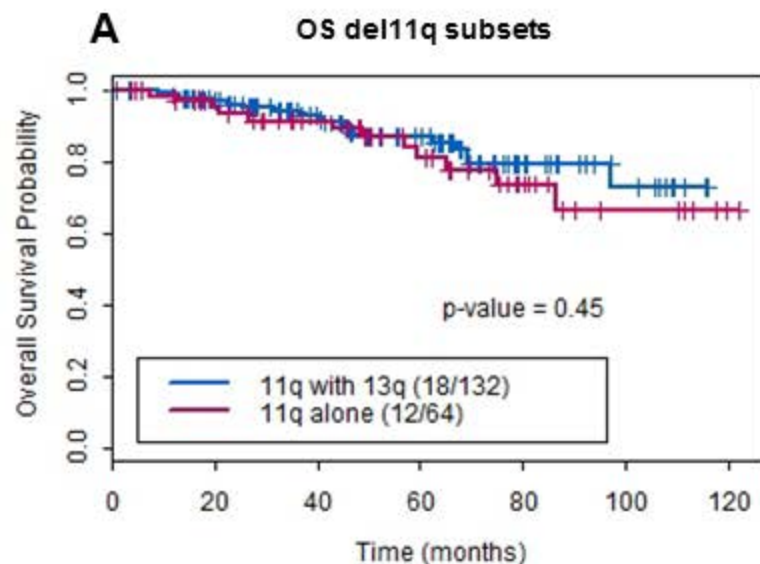


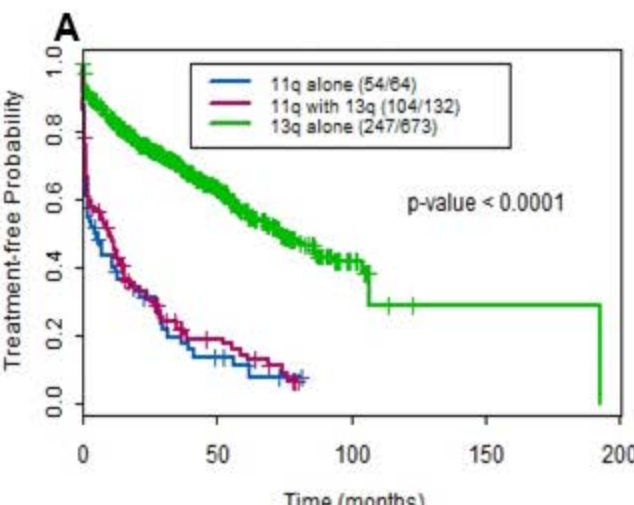
**Suppl. Figure 1 (A-D) – Time to first treatment (TTFT) based on optimal cut off FISH% del11q (High >71.25; Low  $\leq$ 71.25) by recursive partitioning**



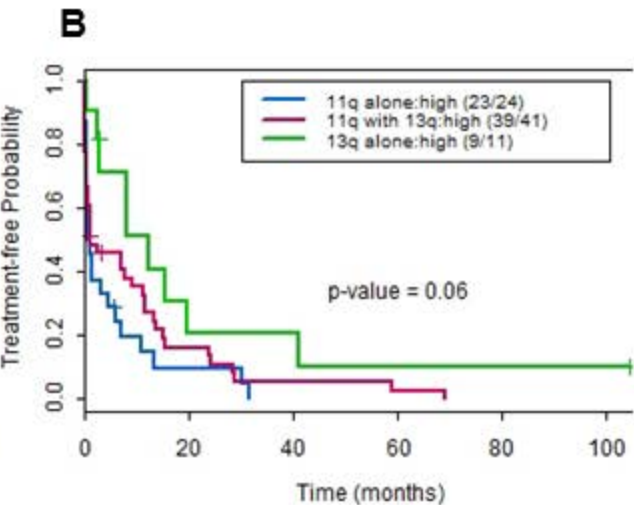
**Suppl. Figure 2 (A-D) – Overall survival (OS) based on optimal cut off FISH% del11q (High >79.75; Low ≤79.75) by recursive partitioning**



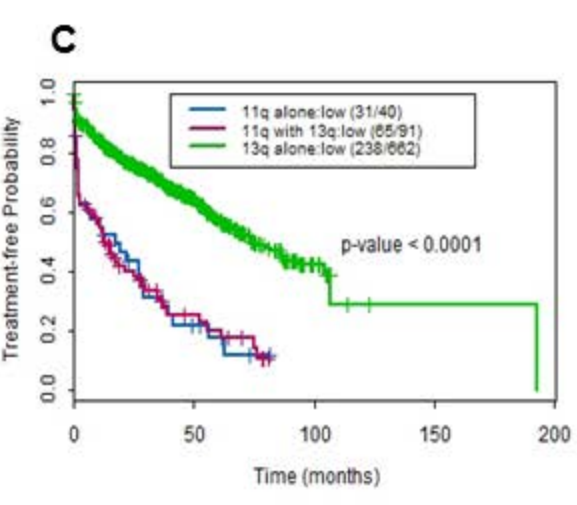
**Suppl. Figure 3 (A-F) – TTFT and OS between del11q subsets and sole del13q based on optimal cut off FISH% del11q (High >71.25; Low ≤71.25 for TTFT) and FISH% del11q (High >79.75; Low ≤79.75 for OS) by recursive partitioning. For sole del13, optimal cut off values were - 118.3 and 94.75 for TTFT and OS.**



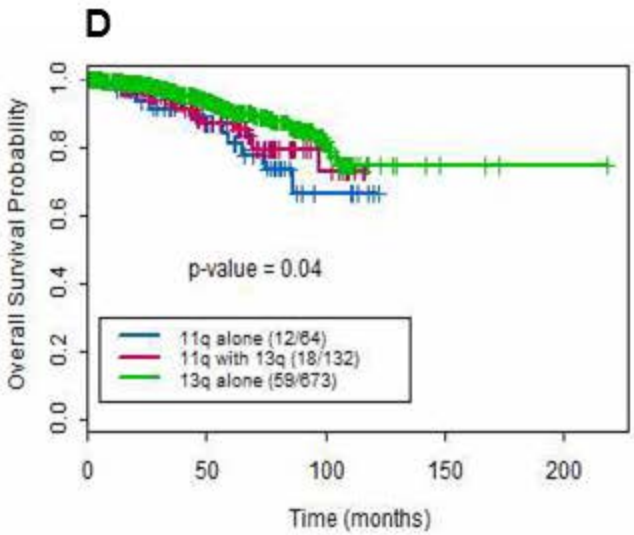
**TTFT (del11q subsets vs sole 13q)**



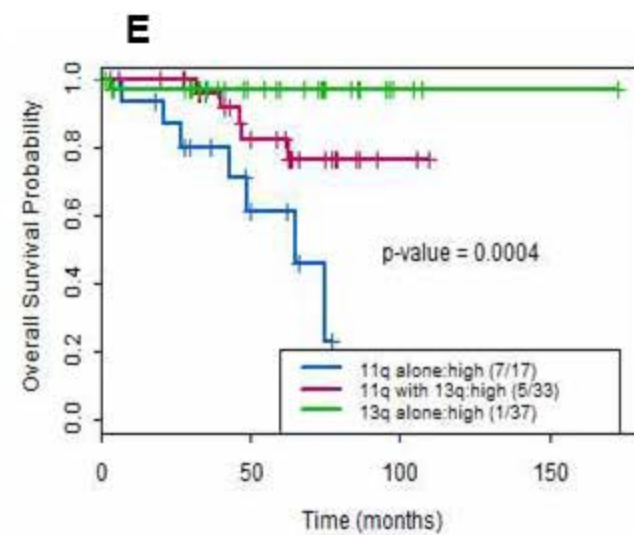
**TTFT High FISH%**



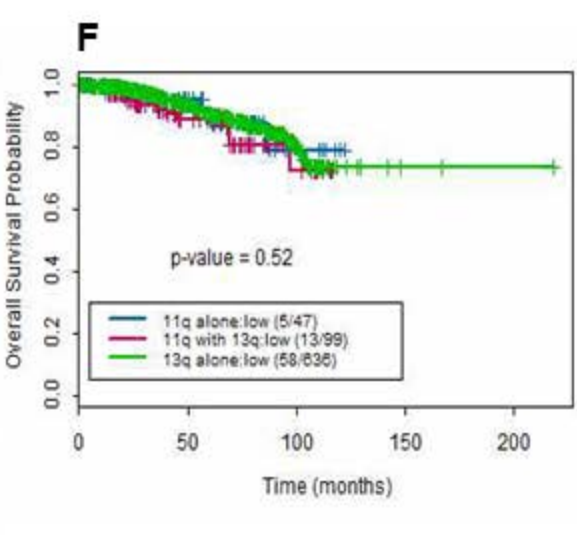
**TTFT Low FISH%**



**OS (del11q subsets vs sole del 13q)**



**OS High FISH%**



**OS Low FISH%**