

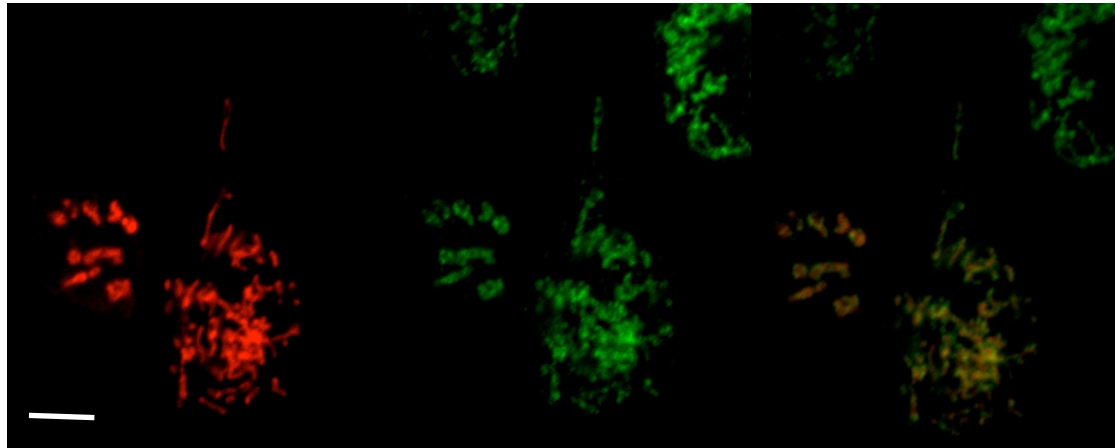
MITO- RFP

MAVS

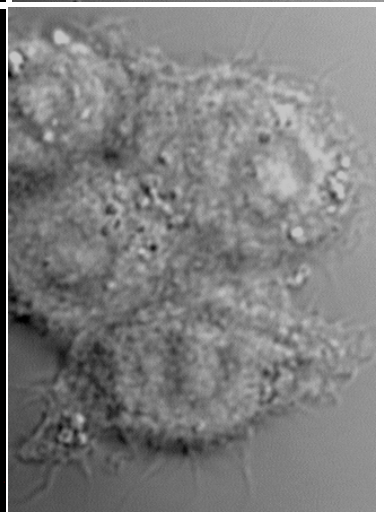
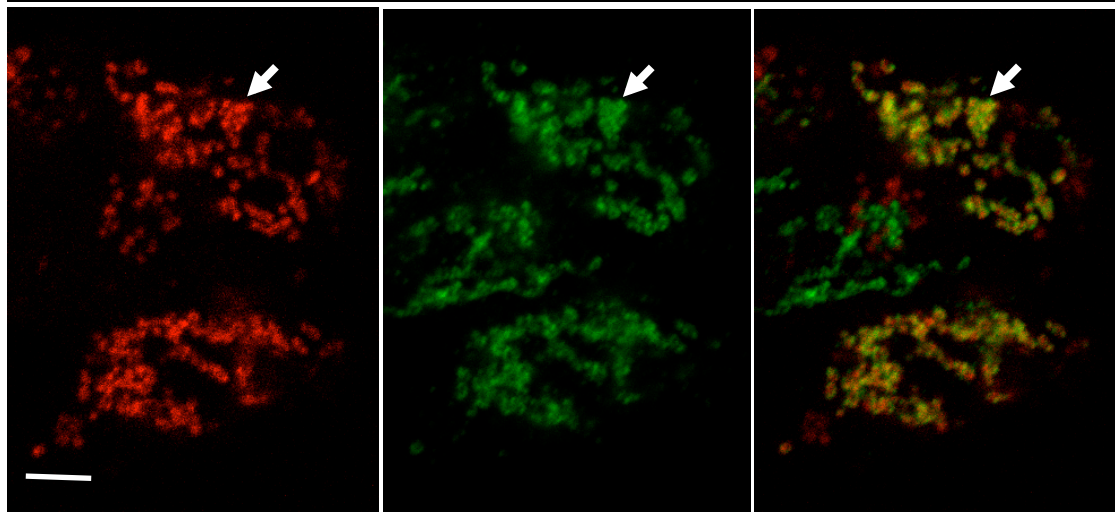
MERGE

DIC

CONTROL



DYNASORE



DYNASORE

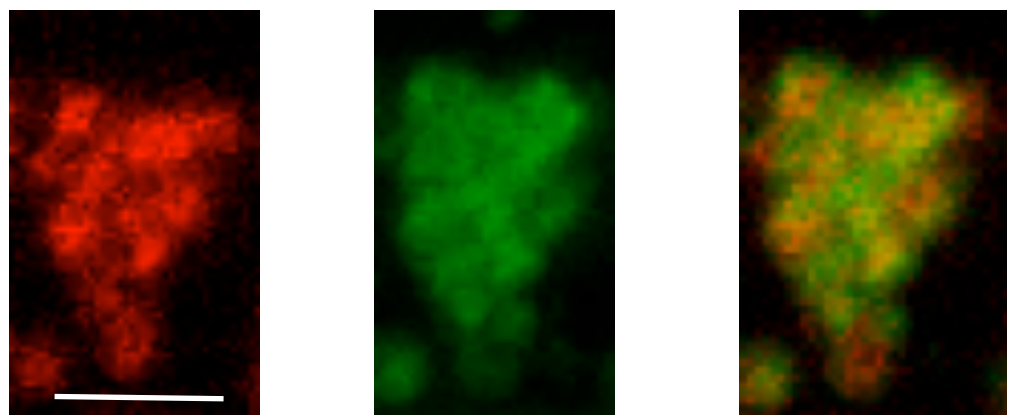


FIGURE S3. Co-localization of MAVS (immuno-fluorescent; green) and mitochondria (Mito-RFP; red); and changes in their structures following treatment with dynasore. Cells were transfected with Mito-RFP plasmid, maintained and treated as described in the Methods section. Differential interference contrast (DIC) microscopy is depicted on the right. Note disruption of threadlike structure evident both in mitochondria and MAVS staining. Arrows in dynasore- treated cells depict MAVS puncta similar to that observed in virus- infected cells (Xu *et al.*, 2014). Lower panel in the Figure depicts enlarged aggregate marked in arrows in middle panel of dynasore- treated cells. Note also that MAVS and mitochondria are not completely co-localized. Bars at the upper 2 panels represent 5 μm and at the lower panel 1 μm .