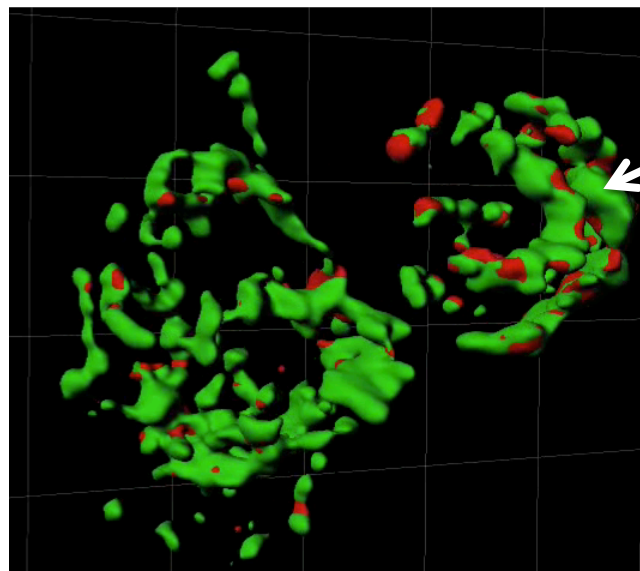
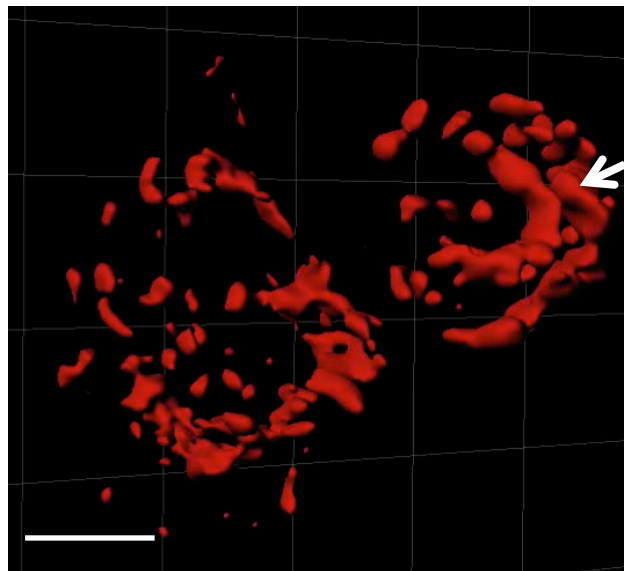


MITO- RFP

MITO- RFP+ MAVS

CONTROL



DYNASORE

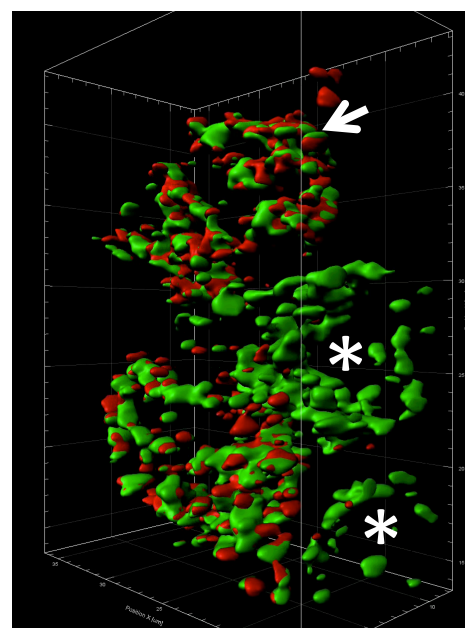
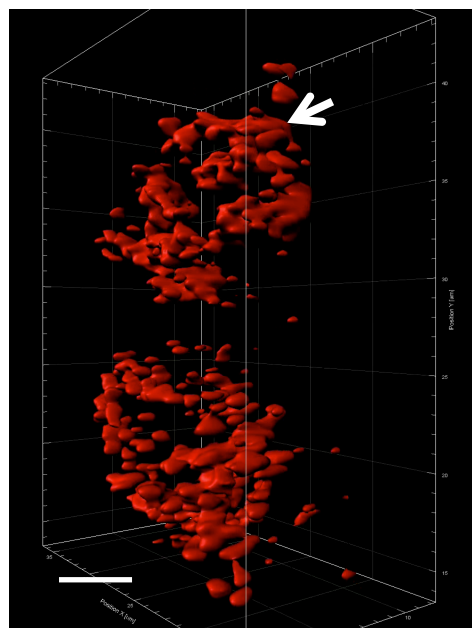


FIGURE S4. Co- localization of MAVS (immuno-fluorescent; green) and mitochondria (Mito-RFP; red); and changes in their structures following treatment with dynasore. (A) Cells were transfected with Mito-RFP plasmid, maintained and treated as described in the Methods section. Images from movies S1 and S2 3D surface rendering, representing one frame each from control (upper panel) and dynasore- treated cells (lower panel). Note that in control cells, MAVS covers the majority of the mitochondrial surface area indicating even distribution on the mitochondrial surface (upper panel, arrow). In dynasore- treated cells, MAVS undergoes redistribution to the area between the mitochondria (lower panel, arrow). Note in upper panel, 2 non- transfected cells (asterisks), which stain for MAVS but not mitochondria. Bars represent 5 μm .