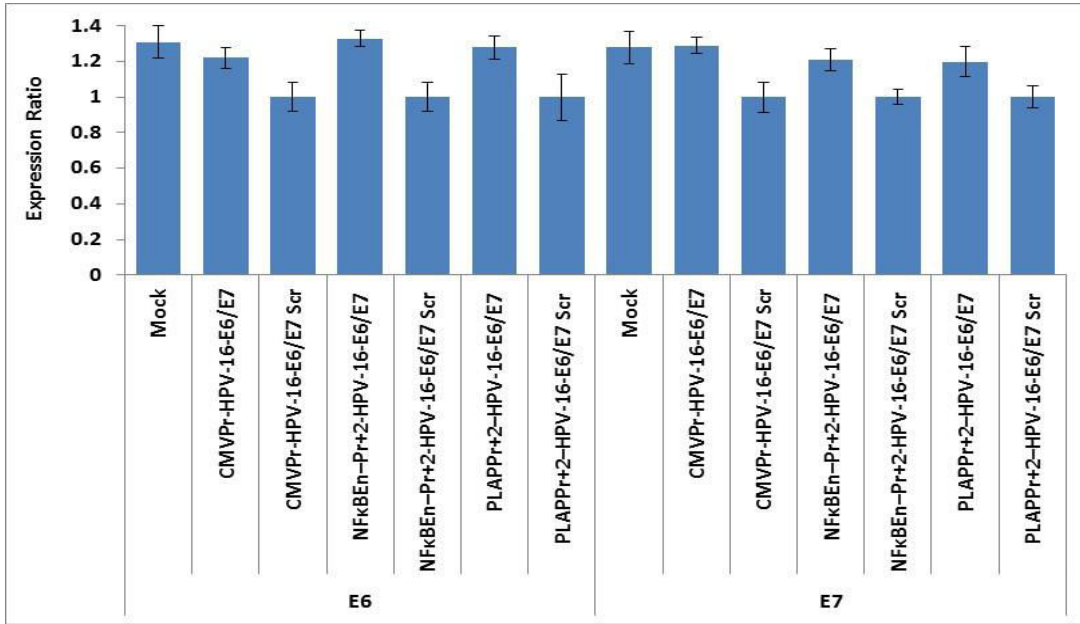


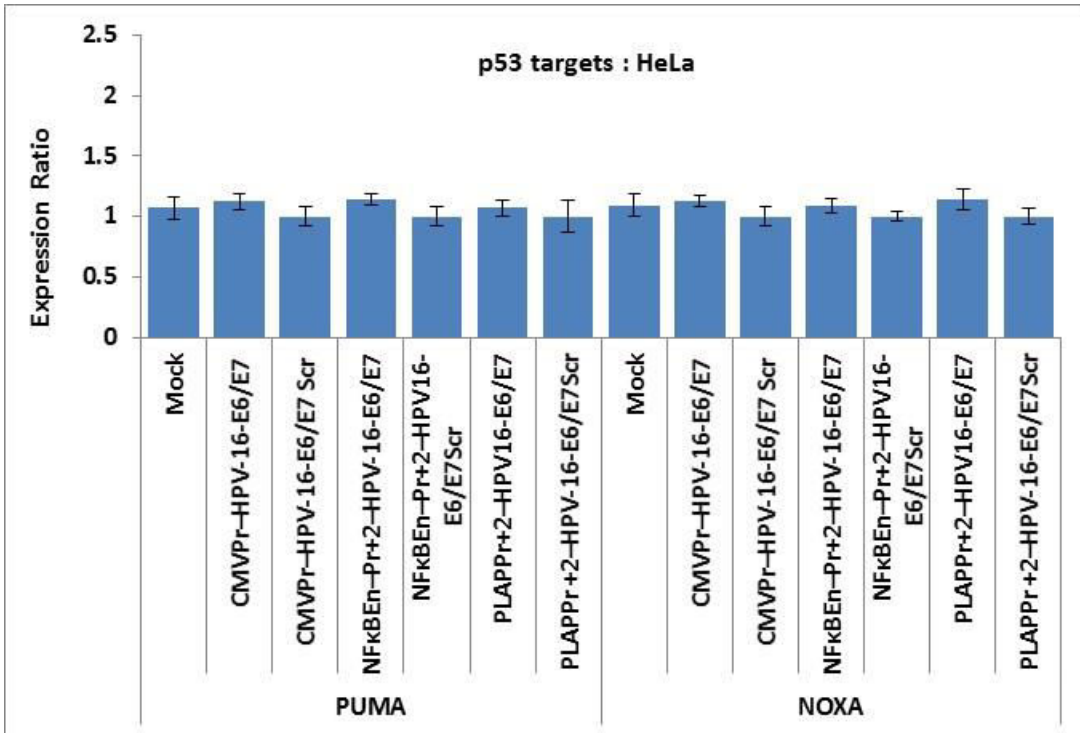
A)

Hela E6/E7

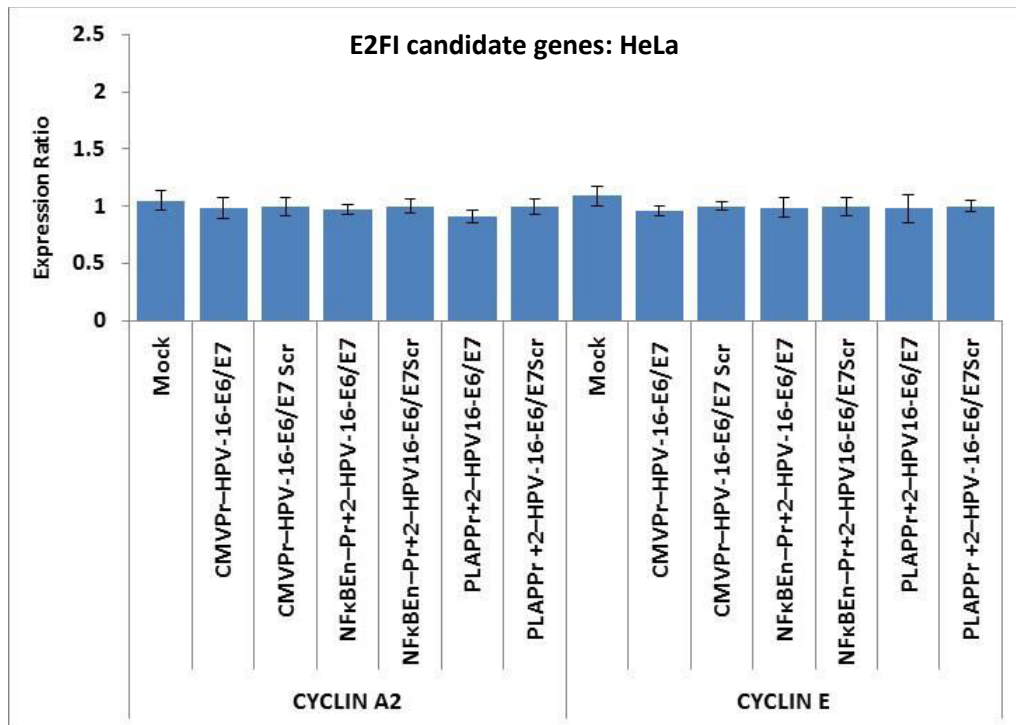


B)

p53 targets : HeLa



c)



Supplementary Figure S4A: Specificity of E6/E7 shRNA towards HPV-16 enhancer HPV-18 integrated cell line (HeLa) was transfected with various TGS inducing constructs (NFκBEn-Pr+2-HPV-16-E6/E7, PLAPPr+2-HPV-16-E6/E7 and CMVPr-HPV-16-E6/E7) along with their scrambled controls and the fall in expression was evaluated by real time PCR after normalization with three housekeeping genes(18s,GAPDH and β-actin). **A)** No, significant fall in expression of E6 and E7 mRNA was observed in HeLa, with any shRNA construct demonstrating their specificity for HPV-16 enhancer. **B)** There was no increase in the expression of p53 target genes like PUMA & NOXA in HeLa. **C)** Decrease in expression of E2FI target genes like cyclin A2 and cyclin E was not significant in HeLa.