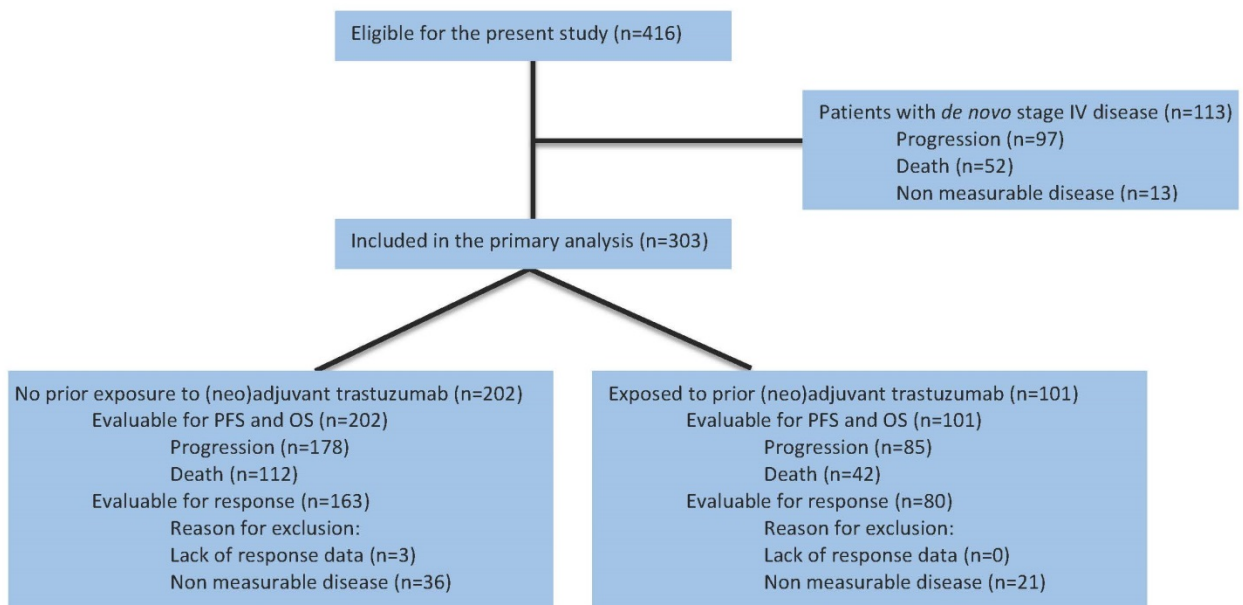


Supplemental Figures for:
Patterns of care and clinical outcomes of first-line trastuzumab-based therapy in HER2-positive metastatic breast cancer patients relapsing after (neo)adjuvant trastuzumab: an Italian multicenter retrospective cohort study
Matteo Lambertini et al.

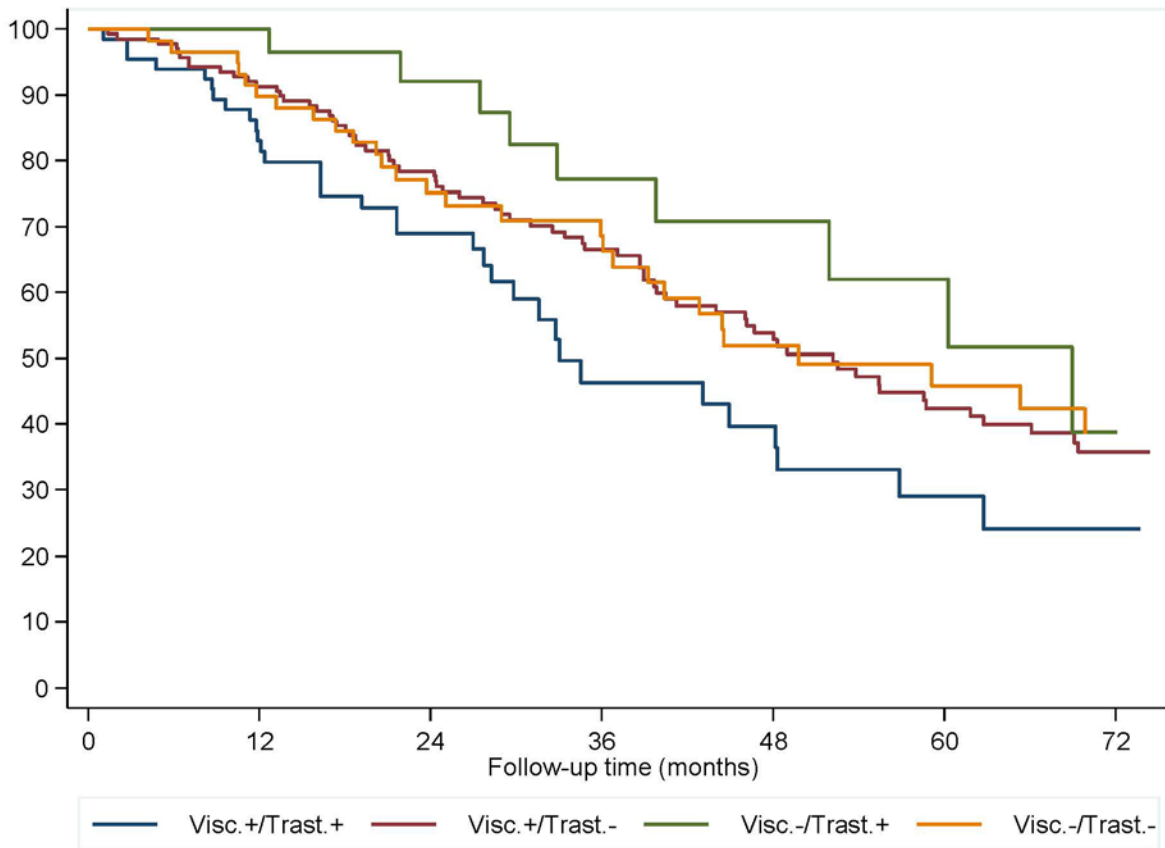
Figure S1. The study flow diagram of participants.



Abbreviations: PFS, progression-free survival; OS, overall survival.

Supplemental Figures for:
Patterns of care and clinical outcomes of first-line trastuzumab-based therapy in HER2-positive metastatic breast cancer patients relapsing after (neo)adjuvant trastuzumab: an Italian multicenter retrospective cohort study
Matteo Lambertini et al.

Figure S2. Overall survival by type of relapse (visceral involvement vs non-visceral involvement) and prior trastuzumab exposure in patients with HER2 positive metastatic breast cancer undergoing first-line trastuzumab-based therapy.



Abbreviations: Visc.+/Trast.+, patients with visceral relapse and prior trastuzumab exposure; Visc.+/Trast.-, patients with visceral relapse and without prior trastuzumab exposure; Visc.-/Trast.+, patients with non-visceral relapse and prior trastuzumab exposure; Visc.-/Trast.-, patients with non-visceral relapse and without prior trastuzumab exposure.

Supplemental Figures for:

Patterns of care and clinical outcomes of first-line trastuzumab-based therapy in HER2-positive metastatic breast cancer patients relapsing after (neo)adjuvant trastuzumab: an Italian multicenter retrospective cohort study

Matteo Lambertini et al.