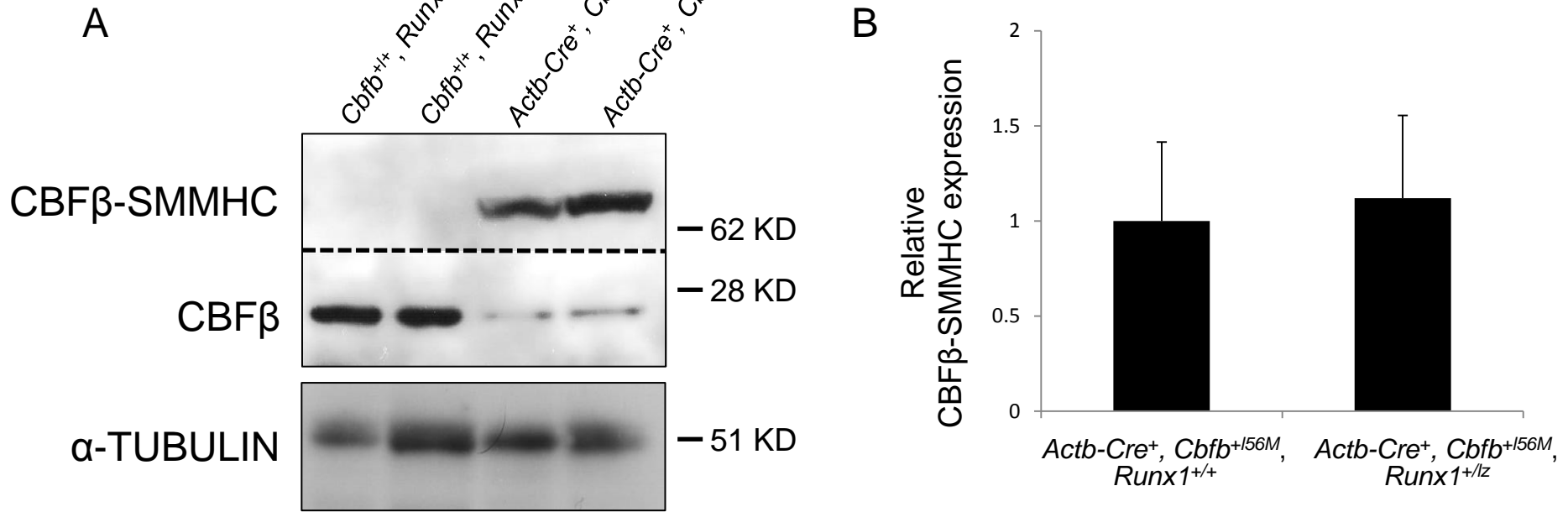


# Supplemental Figure 3



**Supplemental Figure 3. *Runx1* activity is not required for expression of the *Cbfb-MYH11* protein product, CBFβ-SMMHC.** (A) Representative western blot of CBFβ and CBFβ-SMMHC expression in E12.5 embryos of the indicated genotype using anti-CBFβ (Aviva Biosystems). Data shown is from two different regions of the same blot. The dashed line indicates the transition between the two sections. The bottom panel is from the same blot reprobed with anti-α-Tubulin as a loading control. (B) Graph of the relative expression of CBFβ-SMMHC normalized to the loading control in E12.5 embryos of the indicated genotype by western blot analysis using anti-CBFβ141<sup>16</sup>.