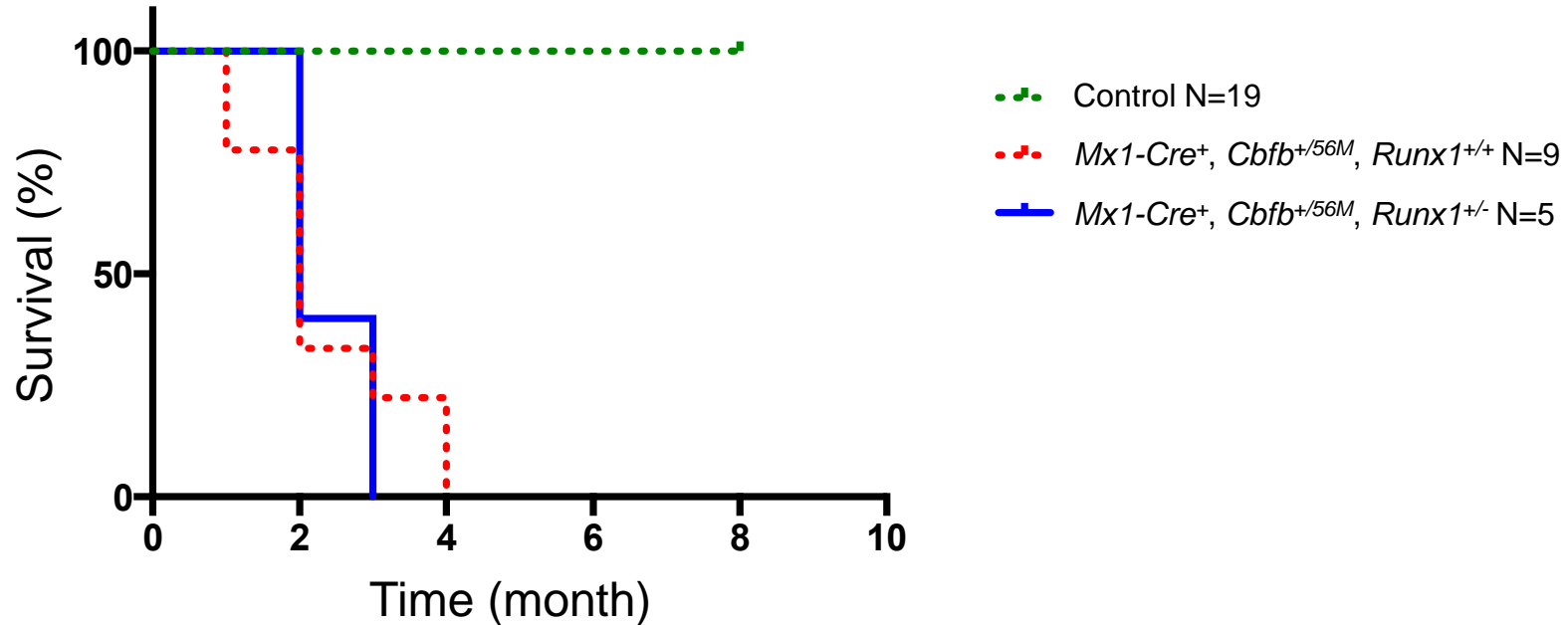


Supplemental Figure 5



Supplemental Figure 5. Loss of one *Runx1* allele does not delay *Cbfb-MYH11* induced leukemia. Kaplan-Meier curve of mice with the indicated genotypes during a 10 month period of observation. Dotted green line: Control mice (N=19; including *Runx1^{+/+}*, *Runx1^{+/-}*, and *Cbfb^{+/56M}*), dotted red line: *Mx1-Cre⁺, Cbfb^{+/56M}, Runx1^{+/+}* (N=9), blue line: *Mx1-Cre⁺, Cbfb^{+/56M}, Runx1^{+/-}* (N=5)