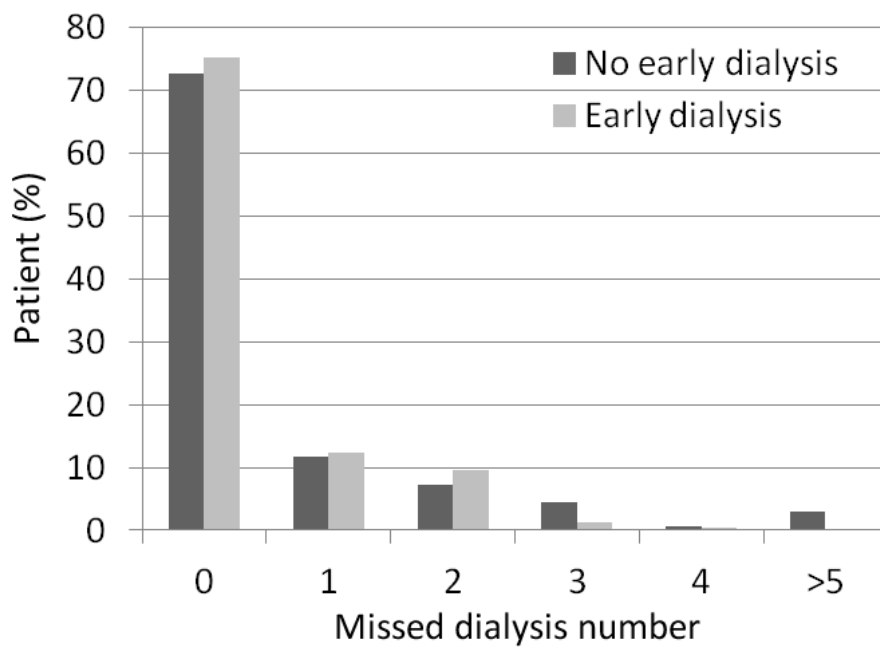


Suppl Fig. 1, Murakami et al.

(A)

	Total population	In survey	
Early dialysis	524 (63.9%)	221 (61.9%)	
		missed	57
		not missed	164
No early dialysis	296 (36.1%)	136 (38.1%)	
		missed	37
		not missed	99
Total (patients)	820	357	

(B)



Supplemental Figure 1: Effect of early dialysis on missed dialysis sessions.

- (A) The participant numbers and percentage of those who received early dialysis prior to the landfall of Hurricane Sandy. Early dialysis did not change the proportion of participants that missed dialysis. ($p=0.81$, Fisher's exact test).
- (B) Histogram of missed dialysis session numbers. In the early dialysis group, the percentages of participants who missed 0, 1, or 2 dialyses increased and those of 3 or more decreased.

Supplemental Table: Tabular tables for Fisher's or chi square test.

Tabular tables describing the participant numbers on: cache of medical record and distribution of emergency packet (A), knowledge of backup dialysis center and distribution of emergency packet (B), non-English speaker and missed dialysis (C), visual impairment and missed dialysis (D).

(A)

		Emergency packet		
		Yes	No	
Medical record at home	Yes	159	70	229
	No	37	91	128
		196	161	357

(B)

		Emergency packet		
		Yes	No	
Knowledge of dialysis center	Yes	132	103	235
	No	64	58	122
		196	161	357

(C)

		Missed dialysis		
		Yes	No	
Understand English	Yes	83	183	266
	No	11	80	91
		94	263	357

(D)

		Yes	No	
Visual impairment	Yes	6	21	27
	No	88	242	330
		94	263	357