

Appendix A. Estimated glomerular filtration rate (eGFR) at dialysis initiation by age group and one-year mortality risk

	Veteran, initiated dialysis within VA		Veteran, initiated dialysis outside VA, paid for by VA		Veteran, initiated dialysis outside VA, not paid for by VA		Nonveteran	
	Unadjusted eGFR, mean (SD)	^a Adjusted eGFR, mean (95% CI)	Unadjusted eGFR, mean (SD)	^a Adjusted eGFR, mean (95% CI)	Unadjusted eGFR, mean (SD)	^a Adjusted eGFR, mean (95% CI)	Unadjusted eGFR, mean (SD)	^a Adjusted eGFR, mean (95% CI)
All patients	9.27 (4.63)	8.74 (8.66, 8.81)	10.17 (4.81)	9.40 (9.24, 9.56)	10.91 (5.68)	10.00 (9.97, 10.04)	9.73 (5.37)	9.86 (9.85, 9.87)
Age group								
<55 y	8.31 (4.38)	7.87 (7.71, 8.03)	9.50 (4.76)	8.78 (8.45, 9.11)	9.09 (5.32)	8.85 (8.76, 8.94)	8.69 (5.19)	8.71 (8.70, 8.73)
55-64 y	9.31 (4.98)	8.66 (8.52, 8.79)	9.97 (4.60)	9.01 (8.77, 9.25)	10.24 (5.71)	9.75 (9.67, 9.83)	9.60 (5.24)	9.68 (9.65, 9.70)
65-74 y	9.51 (4.40)	8.97 (8.81, 9.13)	10.32 (5.02)	9.62 (9.25, 9.99)	10.81 (5.54)	10.24 (10.18, 10.31)	10.13 (5.36)	10.23 (10.20, 10.25)
75-84 y	9.81 (4.38)	9.26 (9.07, 9.44)	11.39 (5.08)	10.37 (9.96, 10.79)	11.56 (5.69)	10.91 (10.85, 10.97)	10.66 (5.43)	10.82 (10.80, 10.85)
≥85 y	10.23 (4.84)	9.40 (8.92, 9.89)	10.67 (3.73)	9.53 (8.35, 10.72)	12.33 (5.72)	11.43 (11.30, 11.56)	11.12 (5.54)	11.28 (11.23, 11.34)
Risk quintile								
1 (low risk)	8.34 (4.32)	7.81 (7.66, 7.97)	9.20 (3.80)	8.17 (7.90, 8.44)	8.88 (4.73)	8.46 (8.38, 8.54)	8.17 (4.51)	8.21 (8.19, 8.23)
2	8.98 (4.49)	8.41 (8.26, 8.56)	10.10 (4.83)	9.03 (8.75, 9.32)	10.02 (5.24)	9.39 (9.31, 9.48)	9.24 (5.01)	9.32 (9.30, 9.34)
3	9.32 (4.65)	8.72 (8.55, 8.88)	10.40 (5.25)	9.36 (9.03, 9.70)	10.76 (5.45)	10.05 (9.96, 10.13)	9.92 (5.34)	10.03 (10.00, 10.05)
4	9.70 (4.66)	9.11 (8.92, 9.29)	10.67 (4.57)	9.60 (9.16, 10.03)	11.40 (5.69)	10.66 (10.58, 10.73)	10.47 (5.56)	10.60 (10.58, 10.63)
5 (high risk)	10.12 (4.82)	9.50 (9.28, 9.73)	11.55 (5.75)	10.61 (10.06, 11.16)	11.96 (6.16)	11.27 (11.19, 11.34)	11.04 (5.90)	11.16 (11.13, 11.18)

^aAdjusted for year, age, age², sex, race, ethnicity, employment status, rurality, end-stage renal disease network, dialysis type, body mass index category, serum albumin, primary renal disease, and comorbid conditions (cardiac, stroke/transient ischemic attack, peripheral vascular disease, hypertension, diabetes mellitus, chronic obstructive pulmonary disease, malignancy, smoking, alcohol abuse, illicit drug use, and inability to walk or transfer).

Appendix B. ^aDifferences in the adjusted probability of dialysis initiation at eGFR \geq 10 mL/min/1.73 m²

Variable	Difference in adjusted probability (95% CI) ^b
Veteran status and location of dialysis initiation	
Veteran, initiated dialysis within VHA	Reference
Veteran, initiated dialysis under VHA Fee Basis	0.06 (0.04, 0.07)
Veteran, initiated dialysis outside VHA	0.09 (0.09, 0.10)
Nonveteran	0.08 (0.08, 0.09)
Year (y)	0.02 (0.02, 0.02)
Age (y)	0.004 (0.004, 0.004)
Sex	
Male	Reference
Female	-0.09 (-0.09, -0.09)
Race	
White	Reference
Black	0.01 (0.01, 0.02)
Asian	-0.11 (-0.11, -0.10)
Native American	-0.09 (-0.10, -0.09)
Other/Missing	-0.06 (-0.07, -0.05)
Ethnicity	
Non-Hispanic	Reference
Hispanic	-0.07 (-0.07, -0.06)
Employment status	
Employed full or part time	Reference
Unemployed	0.09 (0.08, 0.09)
Retired/Homemaker	0.10 (0.10, 0.10)
Other/Missing	0.07 (0.06, 0.07)
Rurality	
Urban	Reference
Rural	0.01 (0.005, 0.01)
Highly rural	-0.02 (-0.03, -0.01)
ESRD network	
1	Reference
2	0.02 (0.01, 0.02)
3	0.03 (0.03, 0.04)
4	0.05 (0.04, 0.05)
5	0.08 (0.07, 0.08)
6	0.03 (0.02, 0.03)
7	0.04 (0.03, 0.05)
8	0.02 (0.01, 0.03)
9	0.09 (0.09, 0.10)
10	0.09 (0.09, 0.10)
11	0.10 (0.09, 0.11)
12	0.11 (0.11, 0.12)
13	0.07 (0.07, 0.08)
14	0.06 (0.05, 0.07)
15	0.11 (0.10, 0.12)
16	0.07 (0.06, 0.07)
17	0.06 (0.05, 0.06)
18	0.10 (0.10, 0.11)
Dialysis type	
Hemodialysis	Reference
Peritoneal dialysis	0.07 (0.07, 0.08)
Other/Missing	0.31 (0.29, 0.33)

BMI category	
Underweight, <18.5 kg/m ²	0.06 (0.06, 0.07)
Normal weight, 18.5-24.9 kg/m ²	Reference
Overweight, 25-29.9 kg/m ²	-0.02 (-0.03, -0.02)
Obese class 1, 30-34.9 kg/m ²	-0.02 (-0.03, -0.02)
Obese class 2, 35-39.9 kg/m ²	-0.01 (-0.01, -0.01)
Obese class 3, ≥40.0 kg/m ²	0.01 (0.01, 0.02)
Missing	-0.004 (-0.01, 0.01)
Serum albumin	
≥3 g/dL	Reference
<3 g/dL	0.01 (0.01, 0.01)
Missing	0.02 (0.01, 0.02)
Primary renal disease	
Diabetes mellitus	Reference
Hypertension	-0.01 (-0.01, -0.01)
Glomerulonephritis	-0.07 (-0.08, -0.07)
Acute tubular necrosis	0.03 (0.03, 0.04)
Other renal disease	-0.02 (-0.03, -0.02)
Missing	-0.03 (-0.04, -0.03)
Comorbid conditions	
Cardiac	0.09 (0.09, 0.09)
Stroke/Transient ischemic attack	0.004 (0.001, 0.01)
Peripheral vascular disease	0.02 (0.02, 0.02)
Hypertension	-0.06 (-0.06, -0.06)
Diabetes mellitus	0.10 (0.10, 0.11)
COPD	0.05 (0.05, 0.06)
Malignancy	-0.03 (-0.04, -0.03)
Smoking	-0.02 (-0.03, -0.02)
Alcohol abuse	0.05 (0.04, 0.06)
Illicit drug use	-0.02 (-0.03, -0.01)
Inability to walk or transfer	0.07 (0.07, 0.07)

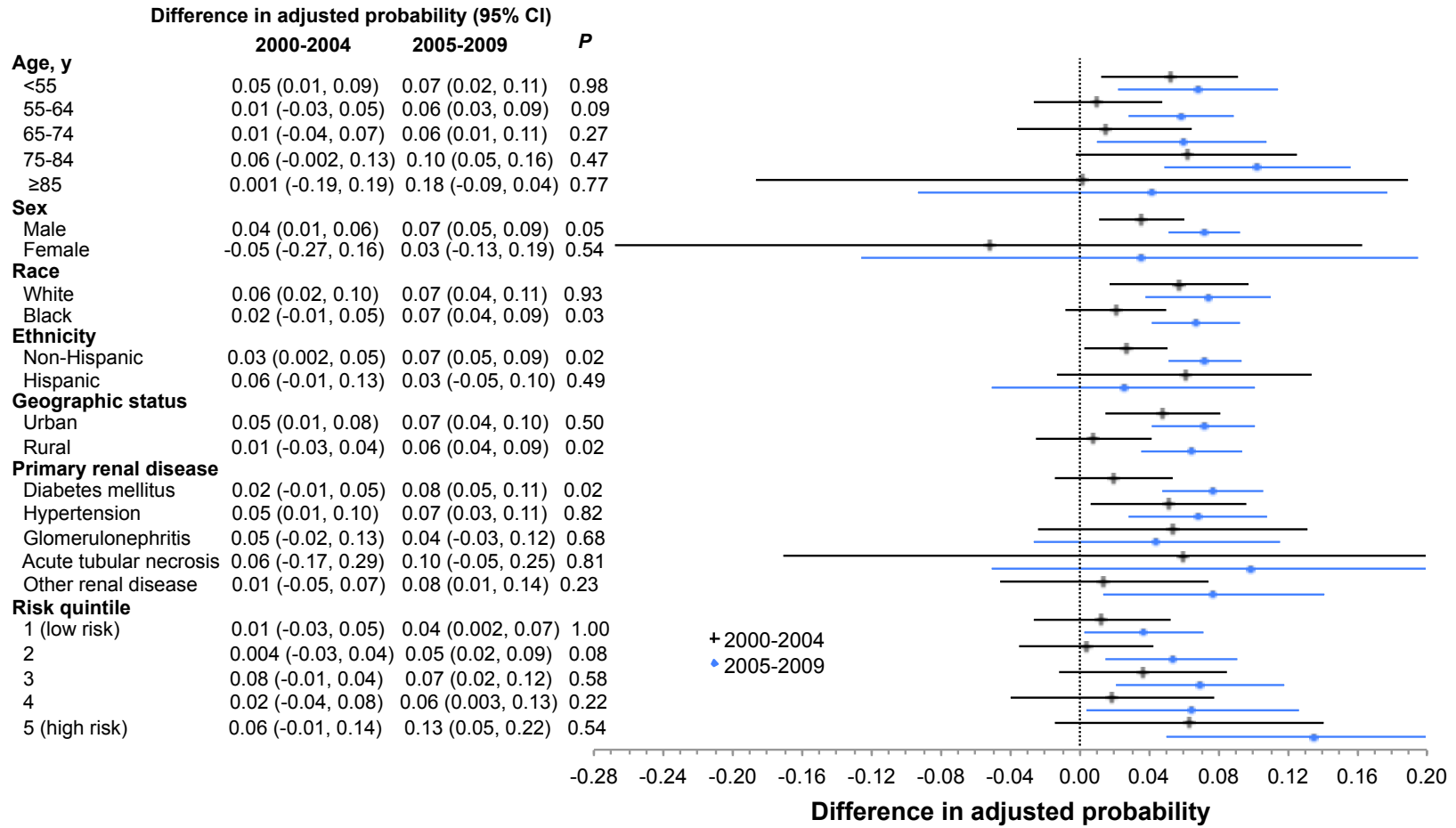
^aThis table represents the marginal effect of each variable on the probability of starting dialysis at an eGFR ≥10 mL/min/1.73 m². For example, female sex is associated with a 9.0 percentage point lower probability of early dialysis compared to male sex.

Abbreviations: BMI, body mass index; COPD, chronic obstructive pulmonary disease

^bAdjusted for veteran status and location of dialysis initiation, year, age, age², sex, race, ethnicity, employment status, rurality, ESRD network, dialysis type, BMI category, serum albumin <3 g/dL, primary renal disease, and comorbid conditions (cardiac, stroke/TIA, peripheral vascular disease, hypertension, diabetes mellitus, COPD, malignancy, smoking, alcohol abuse, illicit drug use, and inability to walk or transfer).

Appendix C. Temporal trends in adjusted probability of dialysis initiation at eGFR ≥ 10 mL/min/1.73 m² in patients initiating dialysis at VA medical centers compared with: A) Veterans initiating dialysis outside the VA, paid for by the VA. B) Veterans initiating dialysis outside of the VA, not paid for by the VA. C) Nonveterans.

A)

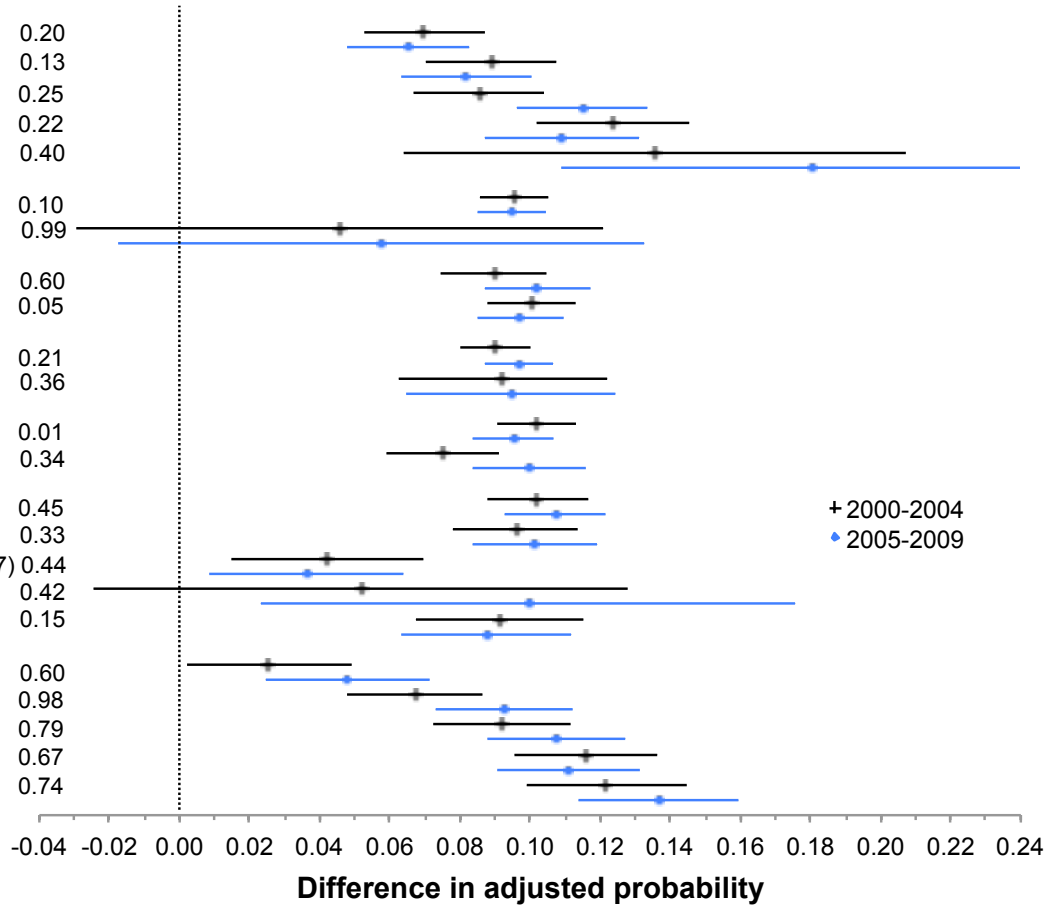


Higher probability of dialysis initiation at eGFR ≥ 10 mL/min/1.73 m² in veterans initiating dialysis within the VA ← | → Higher probability of dialysis initiation at eGFR ≥ 10 mL/min/1.73 m² in veterans initiating dialysis outside the VA, paid for by the VA

B)

Difference in adjusted probability (95% CI)

	2000-2004	2005-2009	P
Age, y			
<55	0.07 (0.05, 0.09)	0.07 (0.04, 0.09)	0.20
55-64	0.09 (0.07, 0.11)	0.08 (0.06, 0.10)	0.13
65-74	0.09 (0.07, 0.10)	0.11 (0.09, 0.14)	0.25
75-84	0.12 (0.10, 0.15)	0.11 (0.08, 0.13)	0.22
≥85	0.14 (0.06, 0.21)	0.18 (0.13, 0.23)	0.40
Sex			
Male	0.10 (0.09, 0.11)	0.09 (0.08, 0.11)	0.10
Female	0.05 (-0.03, 0.12)	0.06 (-0.02, 0.13)	0.99
Race			
White	0.09 (0.07, 0.10)	0.10 (0.08, 0.12)	0.60
Black	0.10 (0.09, 0.11)	0.10 (0.08, 0.11)	0.05
Ethnicity			
Non-Hispanic	0.09 (0.08, 0.10)	0.10 (0.09, 0.11)	0.21
Hispanic	0.09 (0.06, 0.12)	0.09 (0.06, 0.13)	0.36
Geographic status			
Urban	0.10 (0.09, 0.11)	0.10 (0.08, 0.11)	0.01
Rural	0.07 (0.06, 0.09)	0.10 (0.08, 0.12)	0.34
Primary renal disease			
Diabetes mellitus	0.10 (0.09, 0.12)	0.11 (0.09, 0.12)	0.45
Hypertension	0.10 (0.08, 0.11)	0.10 (0.08, 0.12)	0.33
Glomerulonephritis	0.04 (0.01, 0.07)	0.04 (-0.0004, 0.07)	0.44
Acute tubular necrosis	0.05 (-0.02, 0.13)	0.10 (0.04, 0.16)	0.42
Other renal disease	0.09 (0.07, 0.12)	0.09 (0.06, 0.12)	0.15
Risk quintile			
1 (low risk)	0.03 (0.002, 0.05)	0.05 (0.02, 0.07)	0.60
2	0.07 (0.05, 0.09)	0.09 (0.07, 0.11)	0.98
3	0.09 (0.07, 0.11)	0.11 (0.08, 0.13)	0.79
4	0.12 (0.10, 0.14)	0.11 (0.09, 0.14)	0.67
5 (high risk)	0.12 (0.10, 0.14)	0.14 (0.11, 0.17)	0.74



+ 2000-2004
• 2005-2009

Higher probability of dialysis initiation at eGFR ≥10 mL/min/1.73 m² in veterans initiating dialysis within the VA

Higher probability of dialysis initiation at eGFR ≥10 mL/min/1.73 m² in veterans initiating dialysis outside the VA, not paid for by the VA

C)

