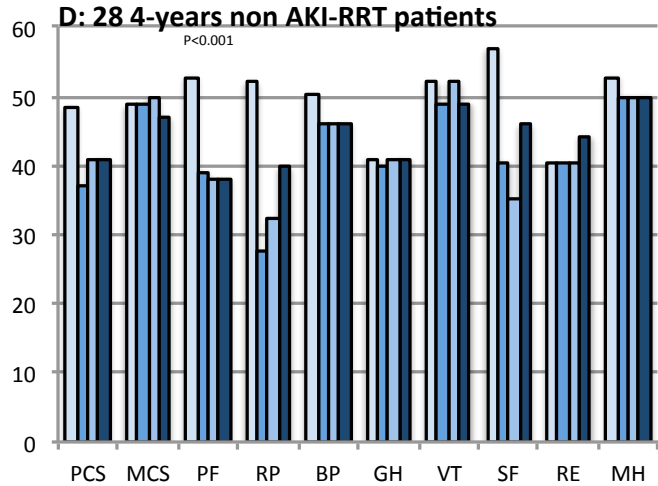
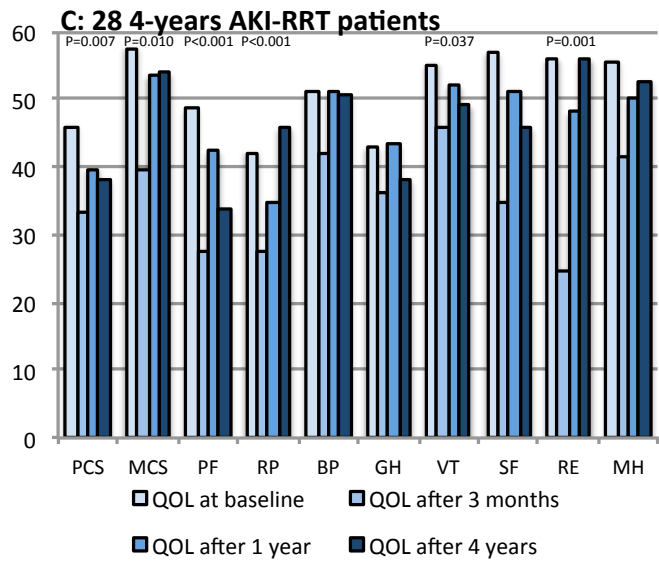
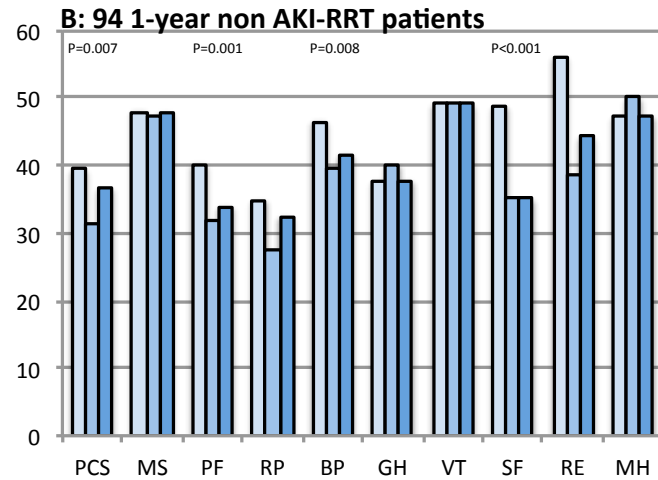
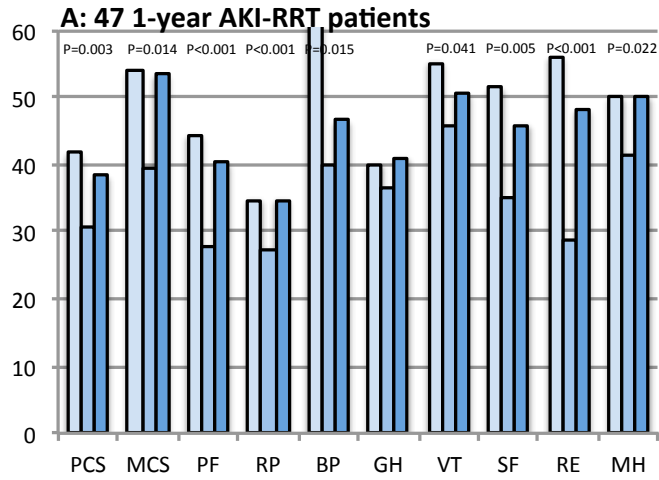


Additional File 2: SF-36 assessments over time: Norm-based median per domain



The X-axis represents the different domains of the SF-36.

The Y-axis represents the norm-based median scores in a respective domain of the SF-36. A norm-based median score between 47-53 in a group of patients is considered as normal or average. Norm-based median scores below 47 indicate impaired functioning or below average; norm-based median scores above 53 indicate better functioning or above average.

Only significant P-values (Friedman test) are shown above the respective domains.

Abbreviations: QOL= quality of life; AKI= acute kidney injury; RRT= renal replacement therapy PCS= physical component score; MCS= mental component score; PF= physical functioning; RP= role physical; BP = bodily pain; GH= general health; VT= vitality; SF= social functioning; RE= role emotional; MH= mental health