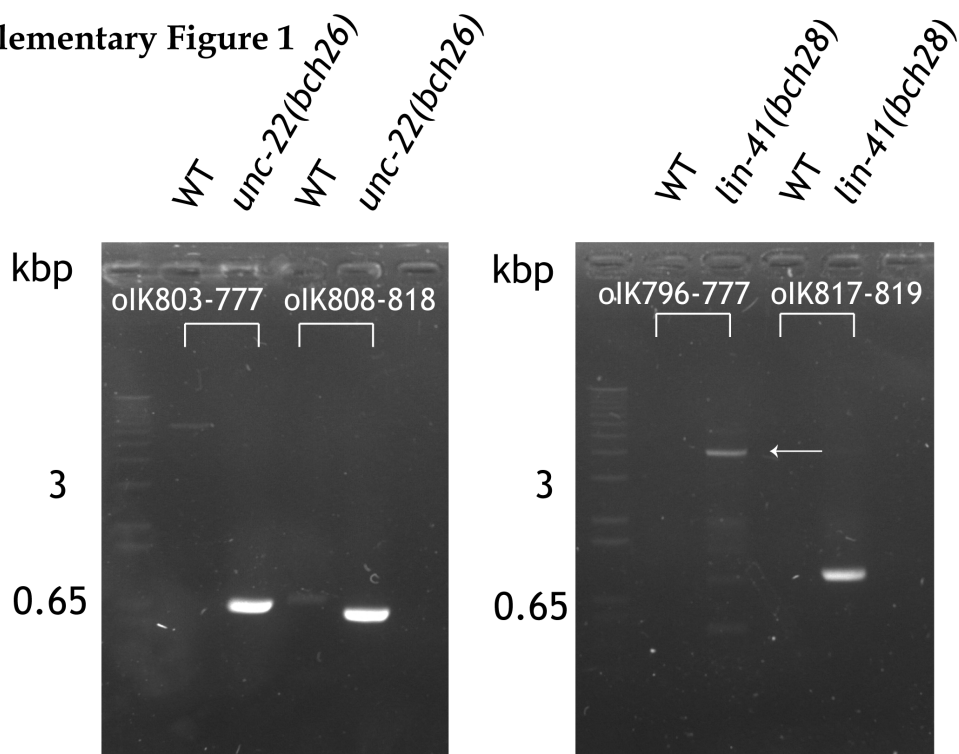


Supplementary Figure 1

A



B

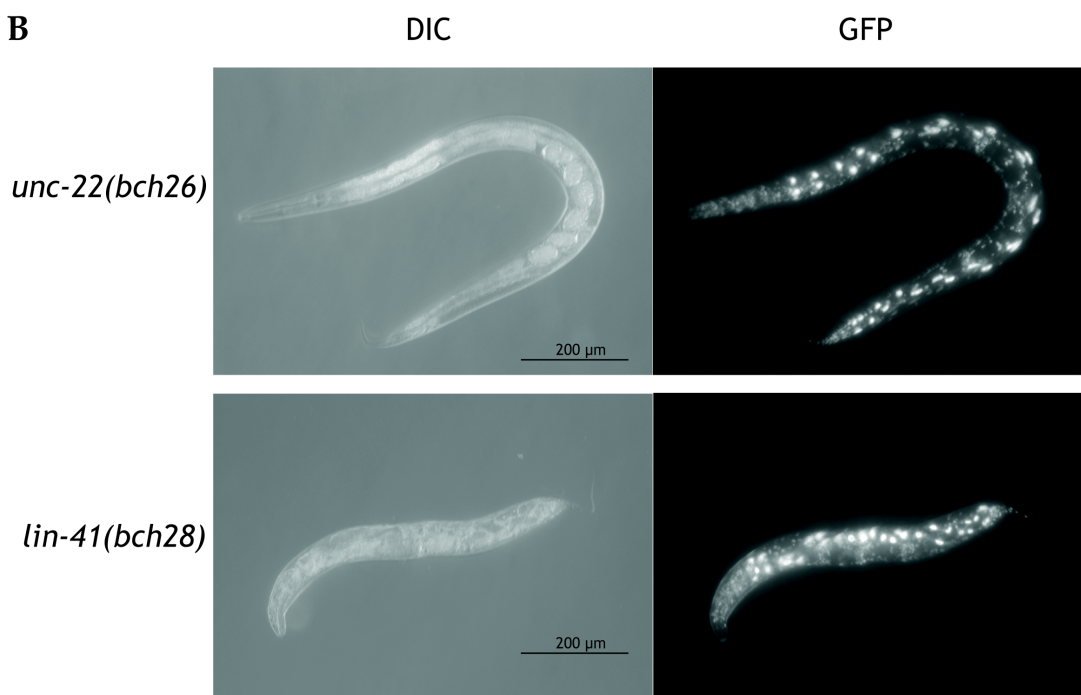


Figure S1. Knock-in of a plasmid into a genomic locus upon non-homologous end joining-mediated repair of a Cas9/CRISPR lesion.

A) PCR products spanning the junctions of *Peft-3::gfp::h2b::tbb-2 3'UTR* –containing plasmids into *unc-22* and *lin-41* loci. PCR primers are described in Materials and Methods. The arrow shows the oIK796-777 PCR product from *lin-41(bch28)* genomic lysates that was sequenced.

B) GFP expression from the *Peft-3::gfp::h2b::tbb-2 3'UTR*-containing plasmids in the *unc-22(bch26)* and *lin-41(bch28)* mutants.