

Supporting information for:

Introduction of a New Critical P-Value Correction Method for Statistical Significance Analysis of Metabonomics Data

Bo Wang,[†] Zhanquan Shi,[‡] Georg F. Weber,[‡] and Michael A. Kennedy^{†*}

Figure S1. Representative NMR spectrum of Group A breast cancer cell line hydrophilic extract.

Figure S2. Scatter plot of p value from combined t test with loadings from PLS-DA (C vs V). Red squares are significant buckets by BC and green triangles are significant by FDR

Fig. S3 a) Scatter plot (A vs V) of p value from combined t test with loadings from PLS-DA; b) Scatter plot (A vs V) of p value from Welch's t test with loadings from PLS-DA.

A #1 w_3_1

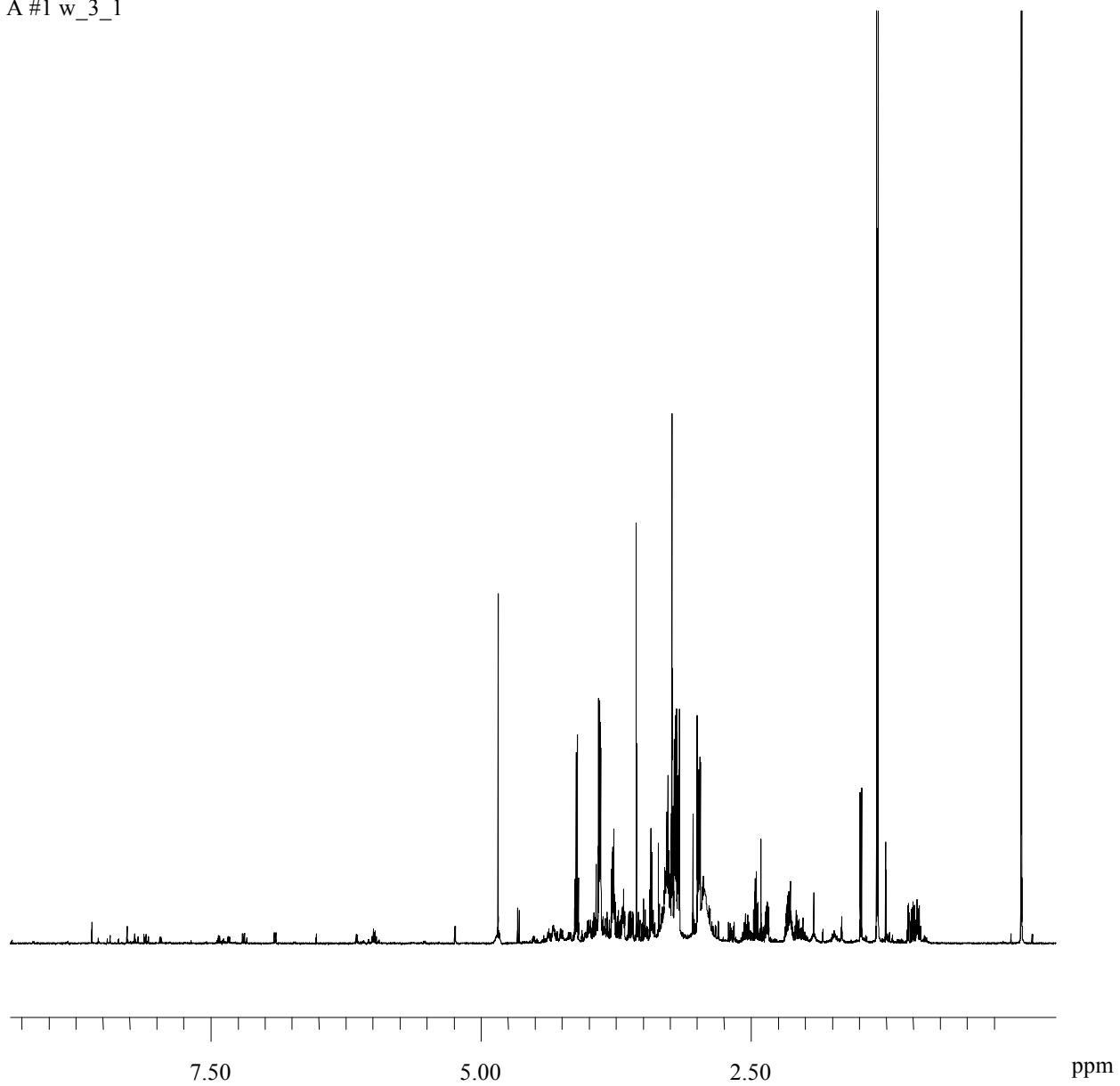


Fig. S1 Representative NMR spectrum of Group A breast cancer cell line hydrophilic extract.

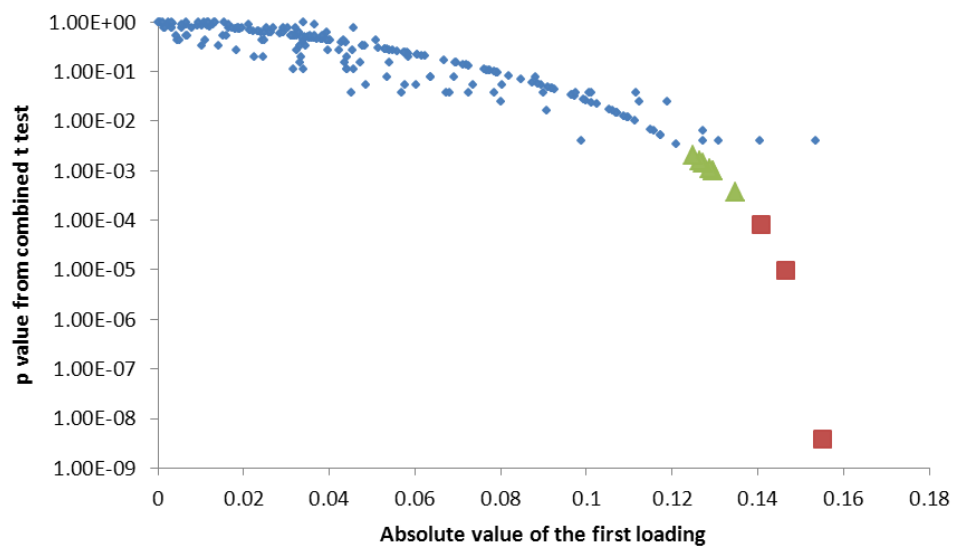


Fig. S2 Scatter plot of p value from combined t test with loadings from PLS-DA (C vs V). Red squares are significant buckets by BC and green triangles are significant by FDR.

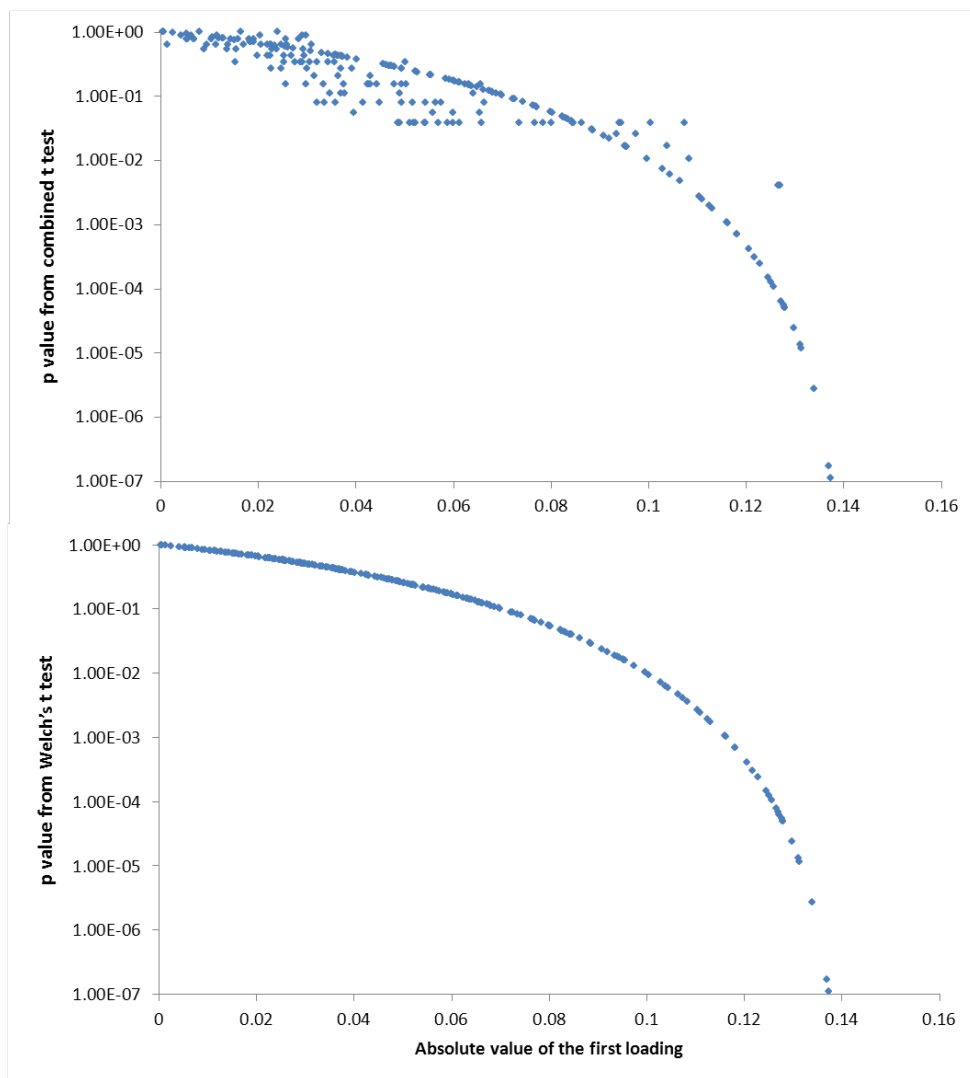


Fig. S3 a) Scatter plot (A vs V) of p value from combined t test with loadings from PLS-DA; b) Scatter plot (A vs V) of p value from Welch's t test with loadings from PLS-DA.