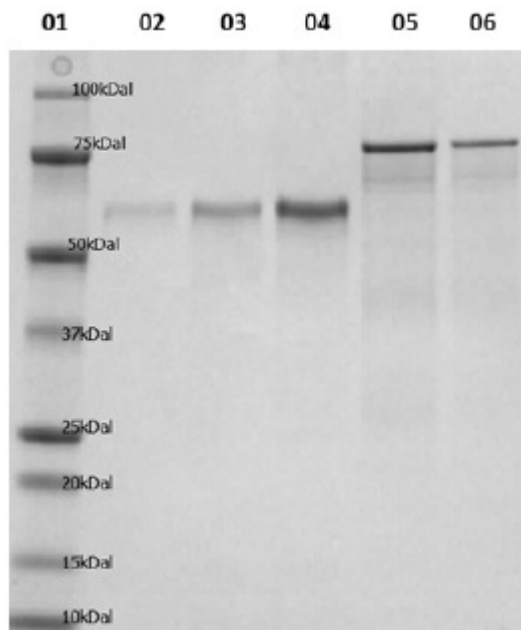


**S5 Figure. Analysis and quantification of GST-his-SDVV-MCP (rec-MCP) after purification**



Lane 1, Protein size marker, Lane 2 to 4: concentration range of BSA used for quantification 25-50-100  $\mu\text{g}/\text{lane}$ ; Lane 5: SDDV-MCP undiluted; Lane 6: SDDV-MCP 2x diluted.