

Supplementary Table and Figures for de Kwon *et al.* “Selective inhibition of SIN3 corepressor with avermectins as a novel therapeutic strategy in triple negative breast cancer”

Page

Supplementary Tables

Supplementary Table 1: qPCR primers used in this study 1

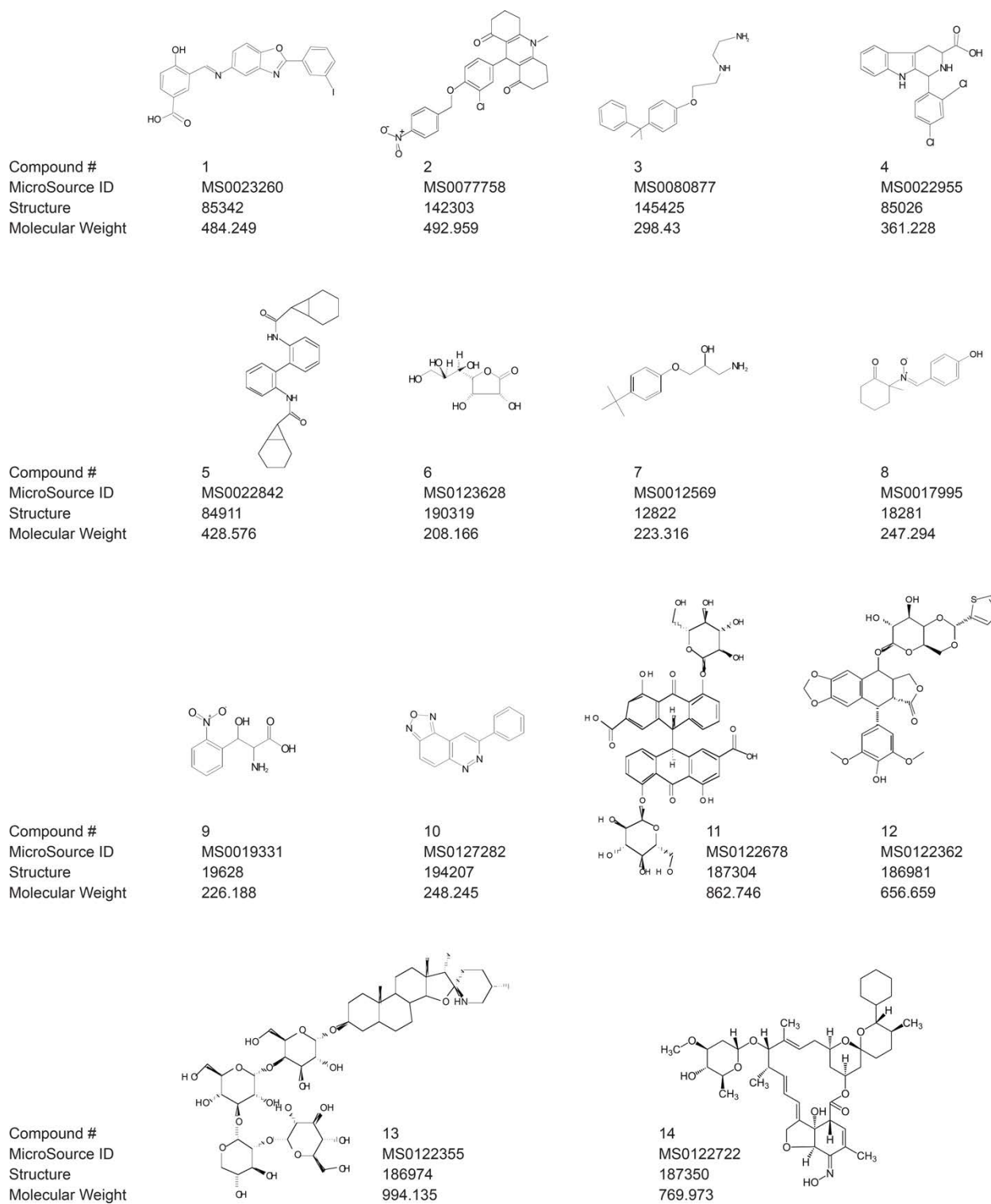
Supplementary Figures

Supplementary Figure S1: Structures of compounds screened in Figure 1A and 1B.....2

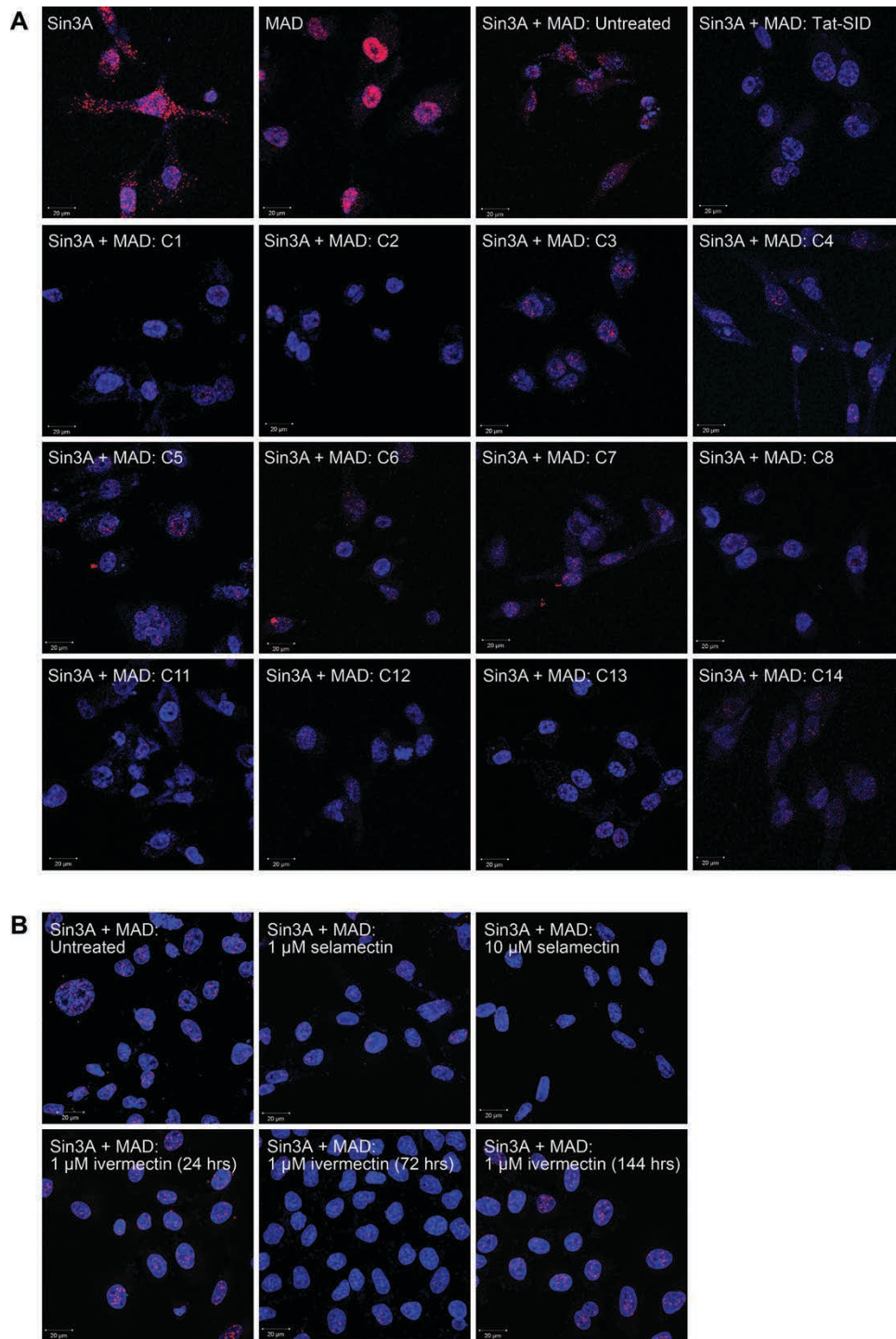
Supplementary Figure S2: Proximity ligation assay (PLA) analyzing SIN3A-MAD interactions.....3

Supplementary Table 1: qPCR primers used in this study

Gene	Forward Primer 5'-3'	Reverse Primer 5'-3'
Human		
<i>CDH1</i>	GTCATGGAAGGTGCTCTTCC	GGATCTTGGCTGAGGATGG
<i>ESR1</i>	GATCCACCTGATGGCCAAG	ACAGATGCTCCATGCCTTTG
<i>PGR</i>	GATTCAGAAGCCAGCCAGAG	TGCCTCTCGCCTAGTTGATT
<i>MMP9</i>	CCCTCAGTGAAGCGGTACAT	TTGACAGCGACAAGAAGTGG
<i>MT1/MMP14</i>	CACTGCCCTACGAGAGGAAGG	TTGGGGTACTCGCTATCCAC
<i>NANOG</i>	TTTGTGGCCTGAAGAAAAC	AGGGCTGTCTGAATAAGCAG
<i>SOX2</i>	TACAGCATGTCTACTCGCAG	GAGGAAGAGGTAACACAGGG
<i>RPL30</i>	GACAAGGCAAAGCGAAATTG	GTATTTTCCGCATGCTGTGC
<i>GAPDH</i>	TCATCATCTCTGCCCCCTCT	TCCGACGCCTGCTTCACCAC
Mouse		
<i>Cdh1</i>	CAGCCTTCTTTTCGGAAGACT	GGTAGACAGCTCCCTATGACTG
<i>Esr1</i>	ATGTCTCACTCAGGGAAGGTGT	ACAAAAATCCTGGGAGACTGAA
<i>Gapdh</i>	TGCACCAACAACCTGCTTA	GGATGCAGGGATGATGTT



Supplementary Figure 1.
Structures of compounds screened in Figure 1A and 1B.



Supplementary Figure 2.

Proximity ligation assay (PLA) analyzing SIN3A-MAD interactions.

A, Cells were treated for 24 hours with 15 μ M SID peptide or compounds (10 μ M) as indicated and analysed by PLA. Panels show close proximity (< 40 nm) of antibody conjugated PLA probes that have been ligated, amplified and detected with complementary fluorescent probes. Red dots represent the presence of SIN3A or MAD protein, or SIN3A-MAD interactions as indicated. Antibodies used and treatment are indicated by white text. Scale bars indicate 20 μ m.

B, PLA analysis of SIN3A-MAD interactions corresponding to treatment with indicated concentrations of selamectin (Fig. 1D) or ivermectin (Fig. 1F) are shown.