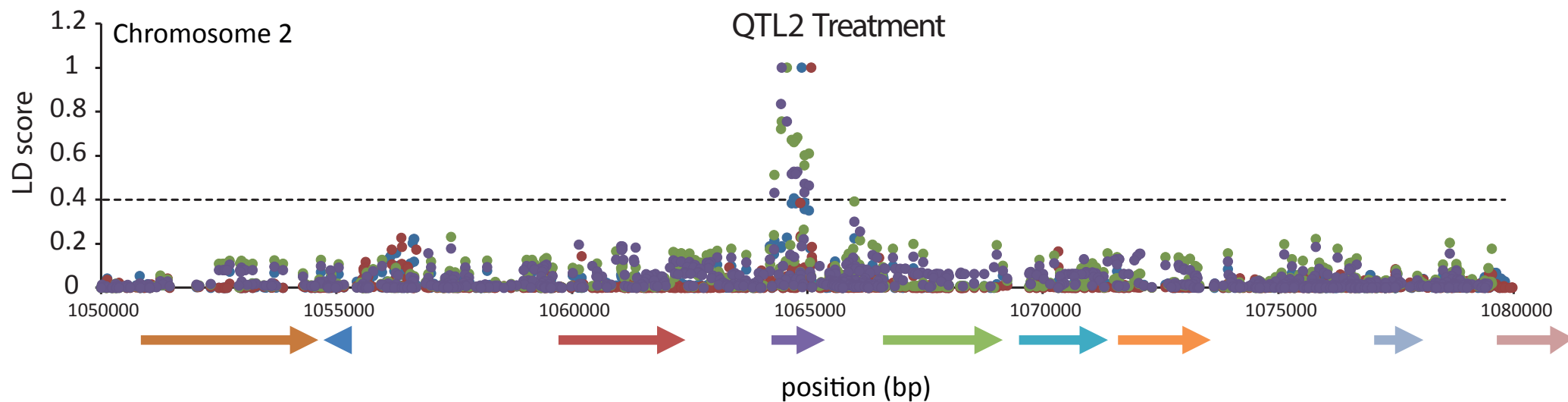


- Sig SNP 1
- AT1G56500
- AT1G56510
- ← AT1G56520
- AT1G56530
- AT1G56540
- ← AT1G56550
- AT1G56553
- ← AT1G56555
- ← AT1G56560
- AT1G56570
- ← AT1G56580
- ← AT1G56590
- AT1G56600
- AT1G56610
- AT1G56620
- ← AT1G56630
- ← AT1G56650
- AT1G56660
- AT1G56670
- ← AT1G56680
- AT1G56690
- AT1G56700
- ← AT1G56710
- ← AT1G56720
- ← AT1G57540
- ← AT1G57550
- AT1G57560
- AT1G57565
- AT1G57570
- AT1G57580
- ← AT1G57590
- ← AT1G57600
- ← AT1G57610
- AT1G57613
- AT1G57620
- AT1G57630
- AT1G57650
- ← AT1G57660
- ← AT1G57670
- ← AT1G57680
- ← AT1G57690

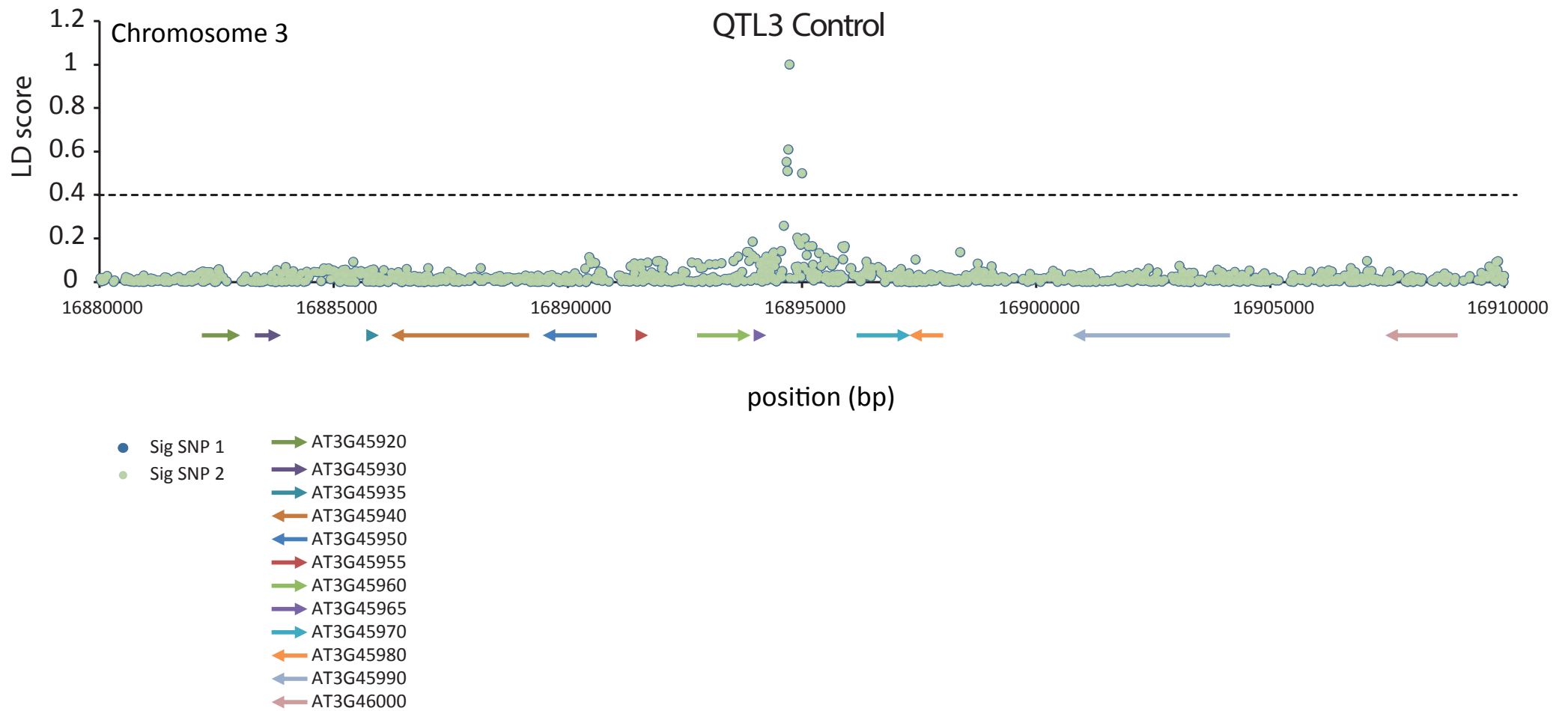
Supplemental Figure S1 LD between significant SNPs detected by GWA mapping and surrounding SNPs obtained from re-sequence data. Each of the genomic regions around one QTL (QTL1 until QTL7) are presented on separate pages. Genes are represented by arrows.

Supplemental Data. Bac-Molenaar et al. (2015). Plant Cell 10.1105/tpc.15.00248

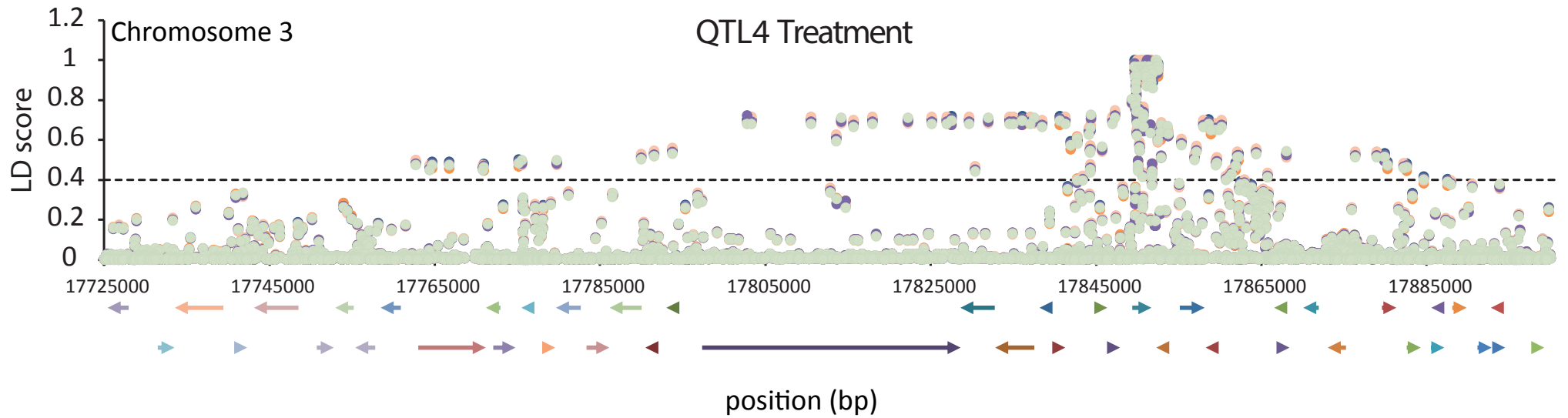


- | | |
|-------------|-------------|
| ● Sig SNP 1 | → AT2G03480 |
| ● Sig SNP 2 | ← AT2G03490 |
| ● Sig SNP 3 | → AT2G03500 |
| ● Sig SNP 4 | → AT2G03505 |
| | → AT2G03510 |
| | → AT2G03520 |
| | → AT2G03530 |
| | → AT2G03550 |
| | → AT2G03560 |

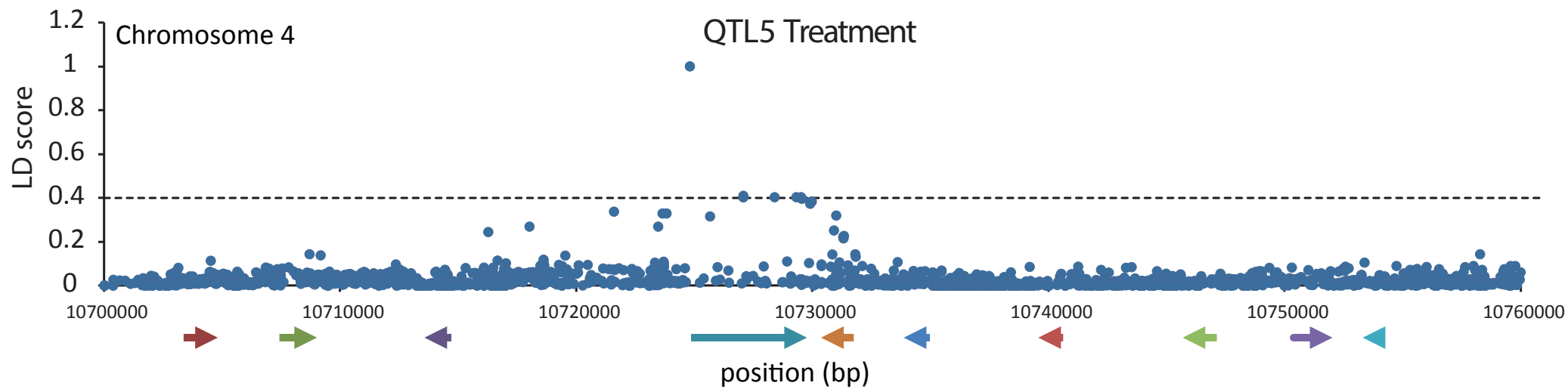
Supplemental Data. Bac-Molenaar et al. (2015). Plant Cell 10.1105/tpc.15.00248



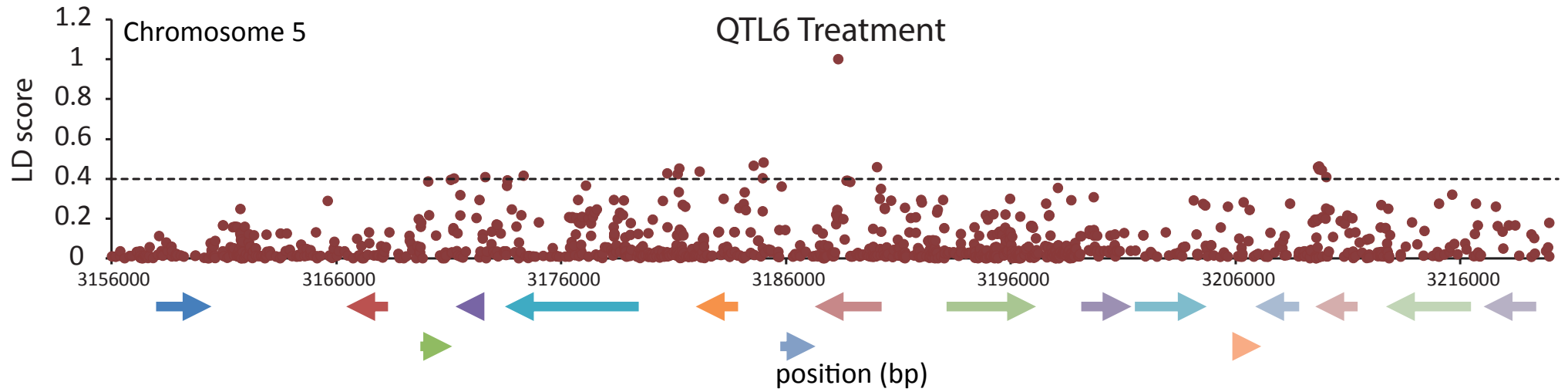
Supplemental Data. Bac-Molenaar et al. (2015). Plant Cell 10.1105/tpc.15.00248



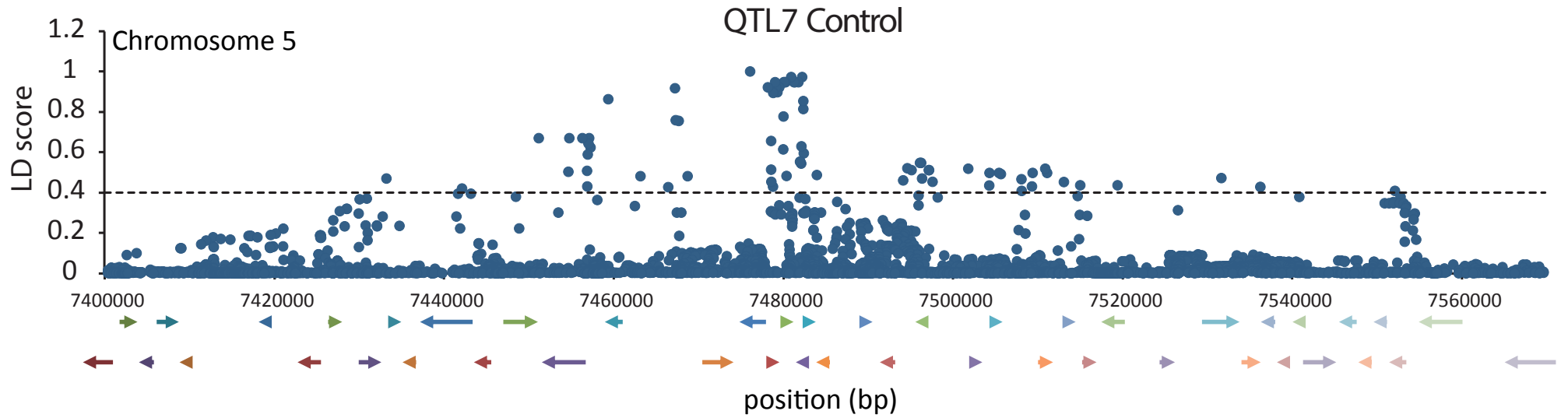
- | | | | |
|-------------|-------------|-------------|-------------|
| ● Sig SNP 1 | ← AT3G48030 | → AT3G48040 | ← AT3G48050 |
| ● Sig SNP 2 | → AT3G48057 | ← AT3G48060 | → AT3G48070 |
| ● Sig SNP 3 | ← AT3G48080 | ← AT3G48090 | ← AT3G48100 |
| ● Sig SNP 4 | → AT3G48110 | ← AT3G48115 | → AT3G48120 |
| ● Sig SNP 5 | ← AT3G48131 | → AT3G48140 | ← AT3G48150 |
| | → AT3G48160 | ← AT3G48170 | ← AT3G48180 |
| | ← AT3G48185 | → AT3G48190 | ← AT3G48195 |
| | ← AT3G48200 | ← AT3G48201 | → AT3G48205 |
| | → AT3G48208 | → AT3G48209 | → AT3G48210 |
| | ← AT3G48220 | → AT3G48230 | ← AT3G48231 |
| | ← AT3G48237 | → AT3G48240 | ← AT3G48250 |
| | ← AT3G48260 | → AT3G48275 | → AT3G48280 |
| | → AT3G48290 | ← AT3G48298 | → AT3G48300 |
| | → AT3G48310 | → AT3G48320 | ← AT3G48330 |
| | → AT3G48340 | | |



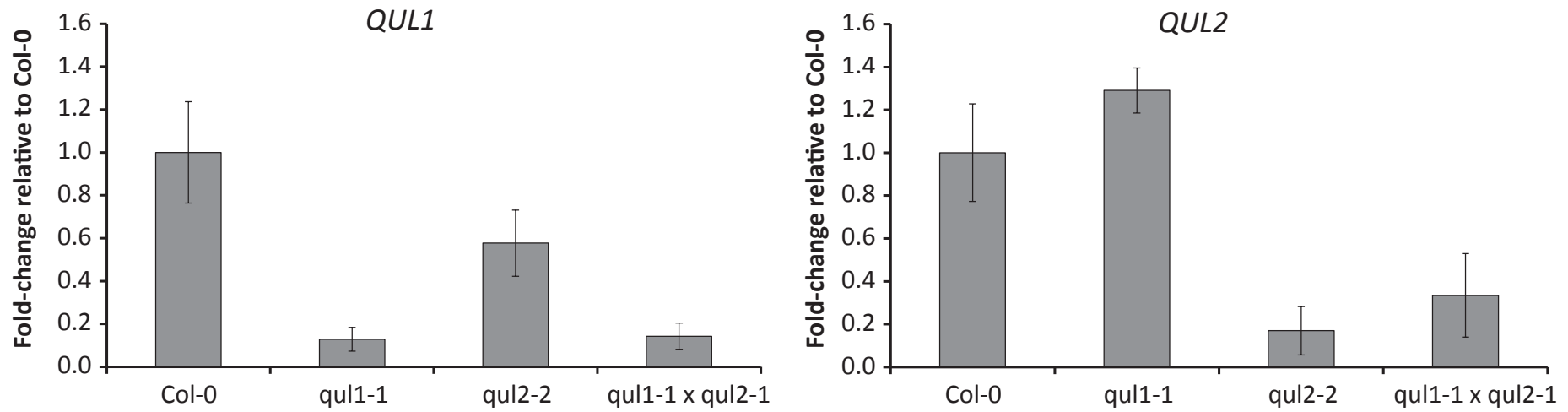
- Sig SNP 1
- AT4G19680
- AT4G19690
- ← AT4G19700
- AT4G19710
- ← AT4G19720
- ← AT4G19730
- ← AT4G19740
- ← AT4G19750
- AT4G19760
- ← AT4G19770



- Sig SNP 1
- AT5G10100
- ← AT5G10110
- AT5G10120
- ← AT5G10130
- ← AT5G10140
- ← AT5G10150
- AT5G10160
- ← AT5G10170
- AT5G10180
- ← AT5G10190
- AT5G10200
- ← AT5G10210
- ← AT5G10220
- ← AT5G10230
- ← AT5G10240



- | | | | |
|-------------|-------------|-------------|-------------|
| ● Sig SNP 1 | ← AT5G22350 | → AT5G22355 | ← AT5G22360 |
| → AT5G22370 | ← AT5G22380 | ← AT5G22390 | ← AT5G22400 |
| → AT5G22410 | → AT5G22420 | → AT5G22430 | ← AT5G22440 |
| ← AT5G22450 | ← AT5G22460 | → AT5G22470 | ← AT5G22480 |
| ← AT5G22490 | → AT5G22500 | ← AT5G22510 | → AT5G22520 |
| → AT5G22530 | ← AT5G22540 | → AT5G22545 | ← AT5G22550 |
| → AT5G22555 | ← AT5G22560 | ← AT5G22570 | → AT5G22580 |
| → AT5G22590 | → AT5G22600 | → AT5G22608 | → AT5G22610 |
| ← AT5G22620 | → AT5G22630 | → AT5G22640 | → AT5G22650 |
| ← AT5G22660 | ← AT5G22670 | ← AT5G22680 | → AT5G22690 |
| ← AT5G22700 | ← AT5G22710 | ← AT5G22720 | ← AT5G22730 |
| ← AT5G22740 | ← AT5G22750 | | |



Supplemental Figure 2 Expression of *QUL1* and *QUL2* in single and double mutants and Col-0 wildtype

Supplemental Table 1 Left and Right border primers used to determine homozygosity of T-DNA inserts

Primer name	Sequences (5'-3')	Description
SALK_065604C_LB	TGAATGGTTTTTGACAGACGA	qul2-2 genotyping
SALK_065604C_RB	CTGGTTGGTCTAGTTCGCAAG	qul2-2 genotyping
GK-745-A07_LB	TTGGTCTTGTTTTAAACCGC	AT2G03505 genotyping
GK-745-A07_RB	AACTTGCTTTGGTCCATCATG	AT2G03505 genotyping
SALK_125910_LB	TCAAAATGTCAAATCCTGAGC	AT2G03490 genotyping
SALK_125910_RB	GTGTATATTCGTGGCTGCCTG	AT2G03490 genotyping
SALK_120131_LB	AAGTCATCACCAACCGATCAAG	mips3-2 genotyping
SALK_120131_RB	ATTCGGGTCATTAACCCAAG	mips3-2 genotyping
SALK_040912_LB	TTGTCTCTATGCCCAATGAGG	AT5G10200 genotyping
SALK_040912_RB	TACAATCTCGGCCAATCATTG	AT5G10200 genotyping