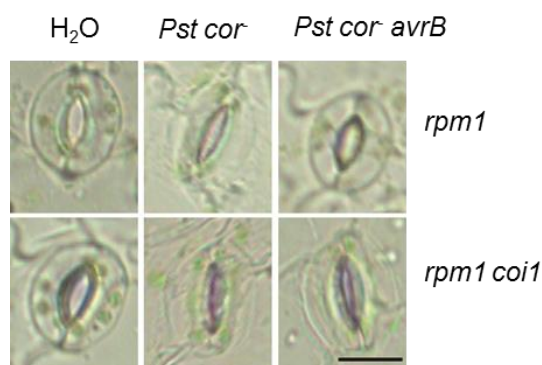




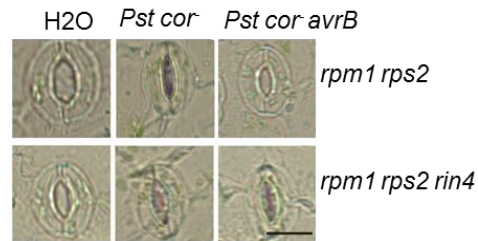
Supplemental Figure 1. The *P. syringae* Effector Protein AvrB

Complements the *cor*⁻ Mutation in Stomatal Opening. AvrB reopens closed stomata in the absence of COR. *rpm1 rps2* leaves were exposed to H₂O, *Pst*, *Pst cor*⁻ or *Pst cor*⁻ *avrB*, and the stomata apertures were measured 4 h after treatment. Three independent experiments were performed with similar results and representative photographs are shown. Scale bar represents 10 μm.



Supplemental Figure 2. COI1 Is Required for *avrB*-Induced Stomatal

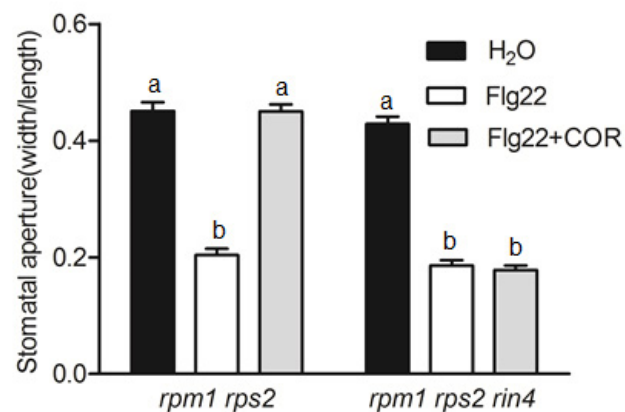
Virulence. *Pst cor*⁻ *avrB* failed to open stomata in *rpm1 coi1*. The epidermal peels from *coi1* and *coi1 rpm1* plants were incubated in H₂O, *Pst cor*⁻ or *Pst cor*⁻ *avrB* for ~4 h, and representative photographs were shown. Scale bar represents 10 μm.



Supplemental Figure 3. RIN4 Is Required for *avrB*-Induced Stomatal

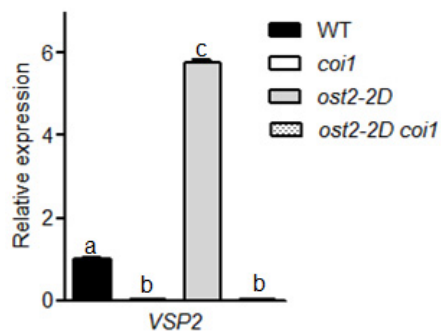
Opening. *Pst cor avrB* does not re-open stomata in *rpm1 rps2 rin4* plants.

Epidermal peels of the indicated genotypes were incubated with H₂O, *Pst cor*, or *Pst cor avrB* for 4 h, and representative photographs are shown. Scale bar represents 10 μ m.



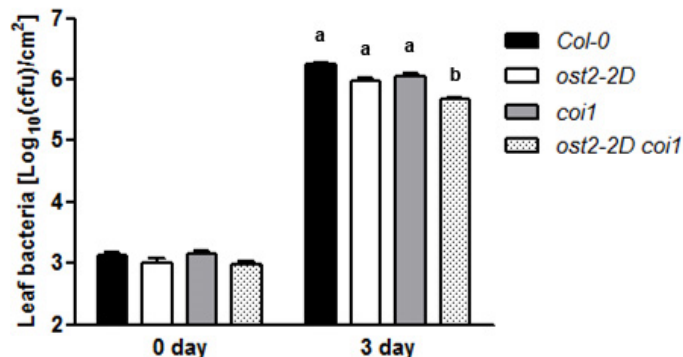
Supplemental Figure 4. COR Re-opens Stomata in a *RIN4*-Dependent

Manner. Epidermal peels of the indicated genotypes were incubated in a buffer with or without 0.5 ng/ml COR and/or 5 μ M flg22 for 4 h, and stomatal apertures were measured. Error bars indicate standard error. Different letters denote significant differences at $P \leq 0.01$ (*t*-test, $n=3$, 3 biological repeats).



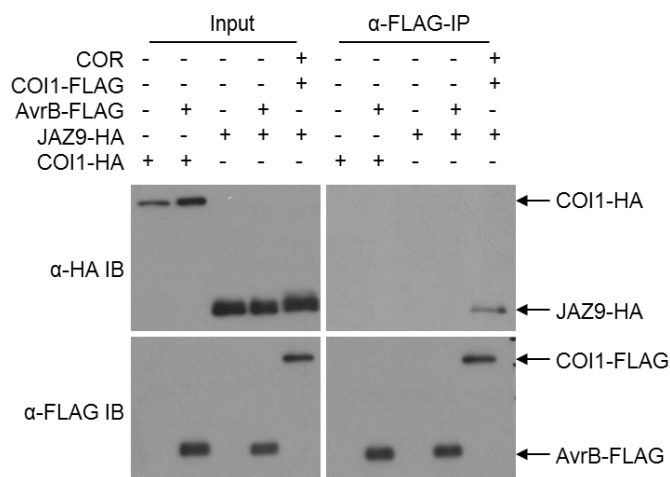
Supplemental Figure 5. VSP2 Transcripts Were Up-Regulated in *ost2-2D*

in a *COI1*-Dependent Manner. The abundance of *VSP2* transcripts was examined in leaves of WT, *coi1*, *ost2-2D* or *ost2-2D coi1* using *ACTIN8* as the internal standard. Error bars indicate standard error. Different letters denote significant differences at $P \leq 0.01$ (*t*-test, $n=3$, 3 biological repeats).



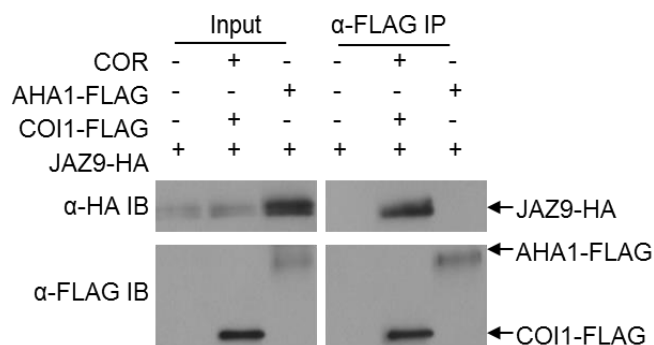
Supplemental Figure 6. *ost2-2D* Lines Did Not Display Enhanced

Susceptibility to Syringe Inoculation with *Pst*. Four-week-old Arabidopsis plants were inoculated by syringe infiltration *Pst* and bacterial counts in the leaf were determined 3 days post-inoculation. Error bars indicate standard error. Different letters denote significant differences at $P \leq 0.01$ (*t*-test, $n=11$, 3 biological repeats).



Supplemental Figure 7. AvrB Does Not Interact with COI1 or JAZ9 in

Protoplasts. *rpm1 rps2* protoplasts were transfected with the indicated plasmids and incubated for 12 h and a co-IP assay was performed using anti-FLAG beads. The COI-JAZ9 interaction induced by COR was included as a positive control.



Supplemental Figure 8. AHA1 Does Not Interact with JAZ9. The indicated

constructs were expressed in wild-type protoplasts, and a co-IP assay was performed using anti-FLAG beads. The COI-JAZ9 interaction was included as a positive control.