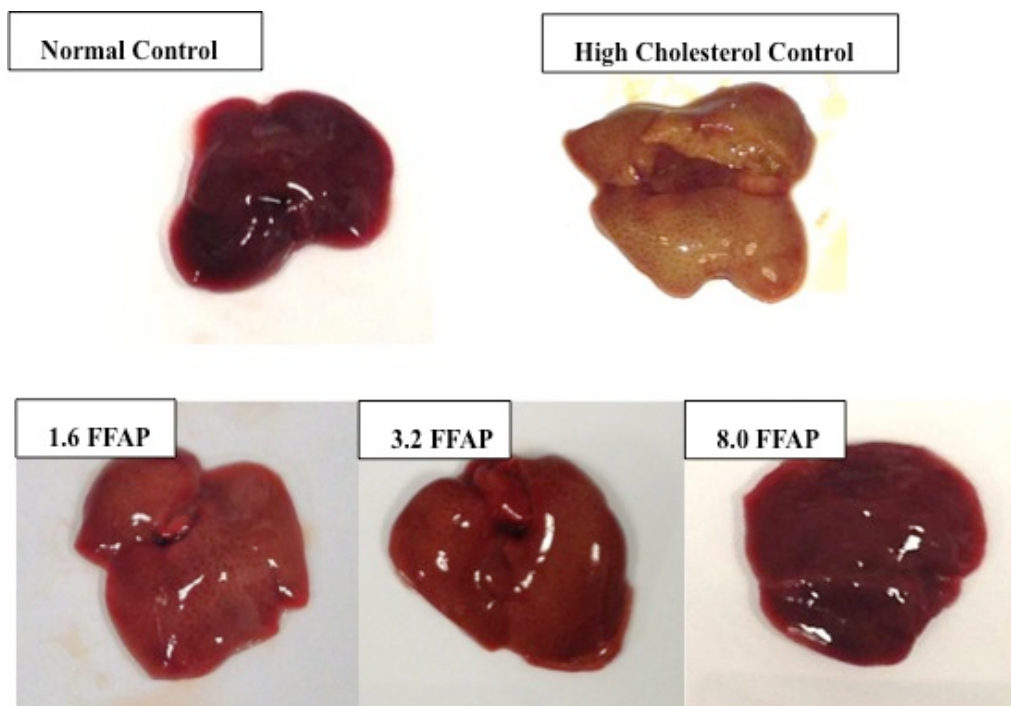


S3 Fig. The liver gross appearance and H&E staining of different diet groups.

(A) *Livers gross appearance* and (B) *H&E staining* in the FFAP diet groups were similar to those in normal control. Normal: Normal diet; High Cholesterol Control: Normal diet + 0.2 % cholesterol; 1.6FFAP: control diet + 1.6 %FFAP; 3.2FFAP: control diet + 3.2 % FFAP; 8.0FFAP: control diet + 8.0 %FFAP.

(A) Liver gross appearance



(B) H&E staining of different diet groups.

