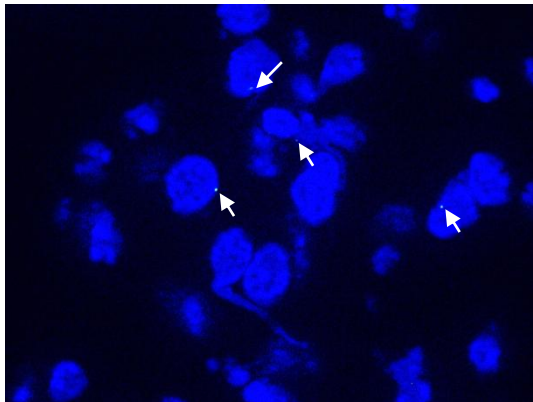


Immunodetection of BBS10 in the *Bbs10^{fl/fl}; Cadh16-Cre^{+/-}* tubular region

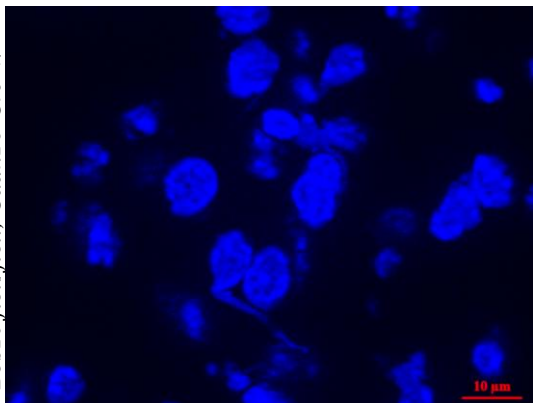
A.

Distal tubule (BBS10, DAPI)

Bbs10^{+/-}; Cadh16-Cre^{+/-}



Bbs10^{flox/flox}; Cadh16-Cre^{+/-}



B.

3D image of distal tubule (BBS10, DAPI)

