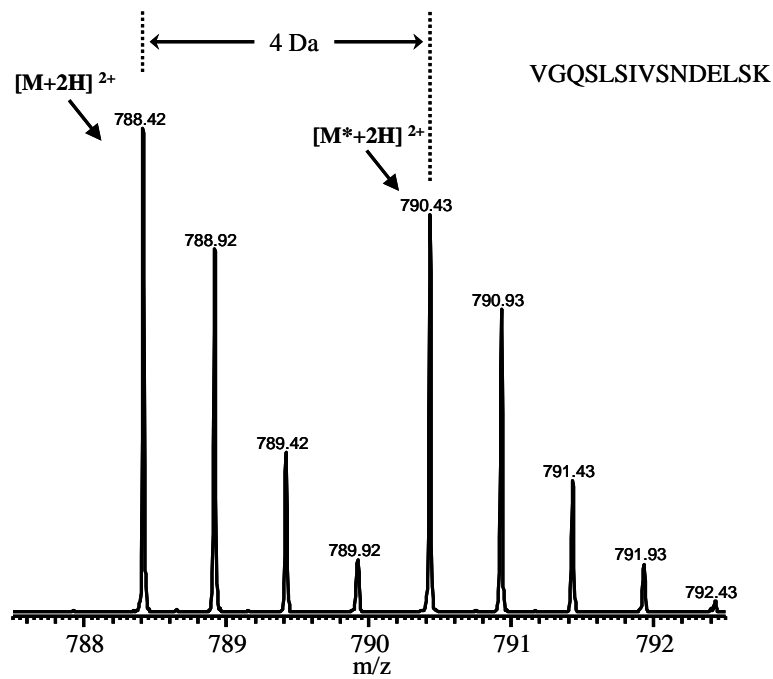
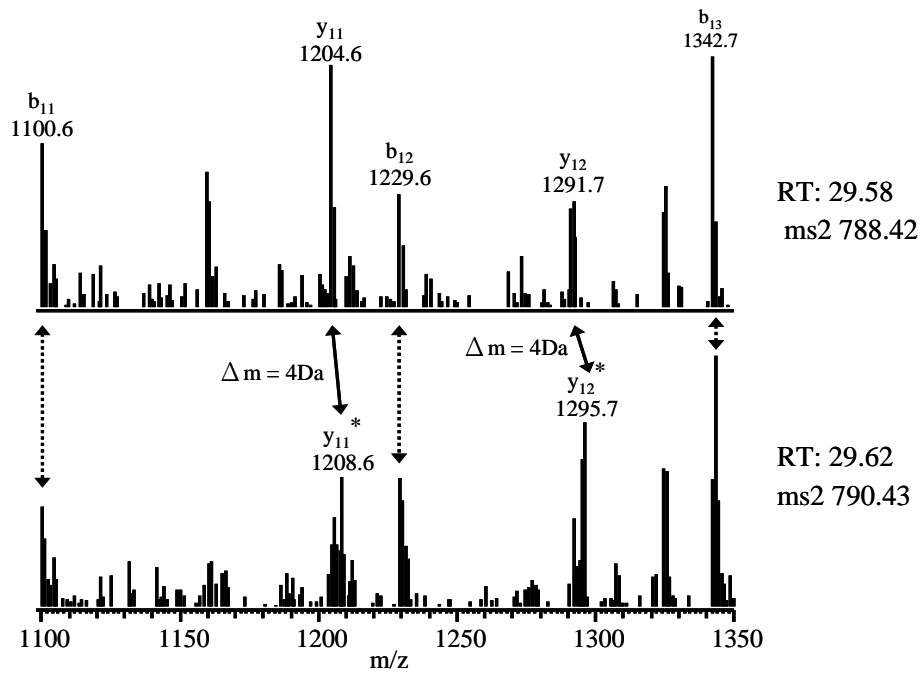


S1 Figure: **An illustration of the mass shift and quantification for peptide VGQSLIVSNDELSK with Lys-D0 and Lys-D4 labeling.** (A) MS spectrum shows a 2 m/z difference for doubly charged peptides; and (B) MS/MS spectrum shows no different for  $b_{11}$ ,  $b_{12}$ , and  $b_{13}$  ions but with a 4 m/z shift for  $y_{11}$  and  $y_{12}$  ions. (C) Manual quantification of peaks for peptides with both Lys-D0 and Lys-D4 labeling from LC chromatogram.

(A)



(B)



(C)

