

FIGURE LEGENDS

Figure 1. CONSORT diagram.

Figure 2. Mean lisinopril concentration versus time after multiple dosing following once-daily dosing in patients who have received a kidney transplant. Patients were stratified by dose group: low dose = 0.1 mg/kg; middle dose = 0.2 mg/kg; and high dose = 0.4 mg/kg. One patient received twice-daily dosing and was not included.

Figure 3. Impact of eGFR on (A) oral clearance allometrically scaled to a 70 kg adult and (B) AUC_{0-24} dose adjusted to 0.1 mg/kg/day. The geometric mean AUC_{0-24} dose adjusted to 0.1 mg/kg in historical hypertensive children is shown for comparison.

SUPPLEMENTAL FIGURE LEGENDS

Supplementary Figure S1. Linear relationship between (A) AUC_{0-24} , (B) C_{max} , or (C) C_{24} and dose in mg/kg (n=21). One patient on twice-daily dosing not included for C_{max} and C_{24} plots.

Supplementary Figure S2. Change in blood pressure from baseline on PK visit at T=0h (pre-dose/trough) vs. lisinopril AUC_{0-24} and pre-dose concentration in lisinopril-naïve patients (n=12).

Supplementary Figure S3. Bland-Altman plot comparing iohexol GFR (iGFR) and eGFR calculated using the Schwartz bedside formula.

Supplementary Table S1. PK population patient characteristics and dosing by inclusion criteria group

	Lisinopril-naïve (n=12)	Standard of care (n=10)	All (n=22)
Dose (mg/kg/day)	0.18 (0.09, 0.48)	0.12 (0.03, 0.21)	0.14 (0.03, 0.48)
Age (y)	13.7 ± 2.9	13.8 ± 3.2	13.8 ± 3.0
Weight (kg)	51.4 ± 23	51.2 ± 26	51.3 ± 23.8
Female	6 (50%)	2 (20%)	8 (36%)
Race/ethnicity			
Hispanic/Latino	1 (8%)	3 (30%)	4 (18%)
Black	7 (58%)	0	7 (32%)
White	4 (33%)	7 (70%)	11 (50%)
Baseline creatinine (mg/ml)	1 ± 0.5	1.1 ± 0.5	1 ± 0.5
Baseline eGFR (ml/min per 1.73m ²)	73.6 ± 24.1	66.2 ± 25.5	70.2 ± 24.4
Time since transplant (years)	3.1 ± 3	6.1 ± 4.7	4.5 ± 4.1
Tacrolimus use	8 (67%)	8 (80%)	16 (73%)

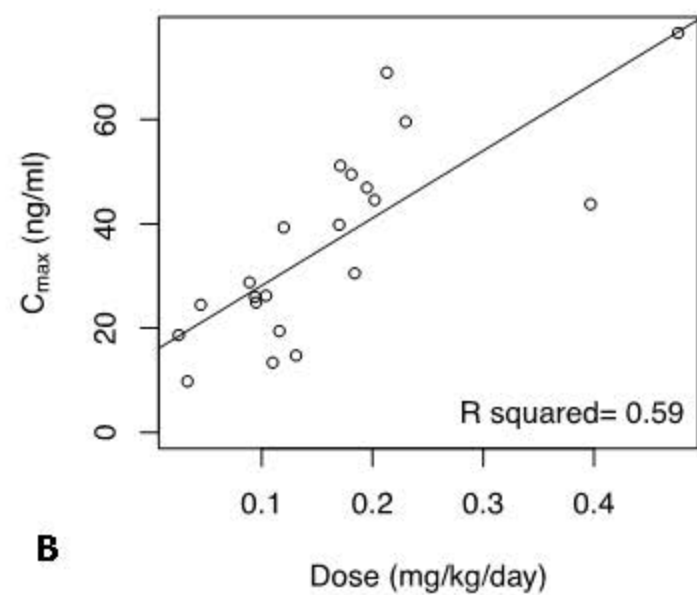
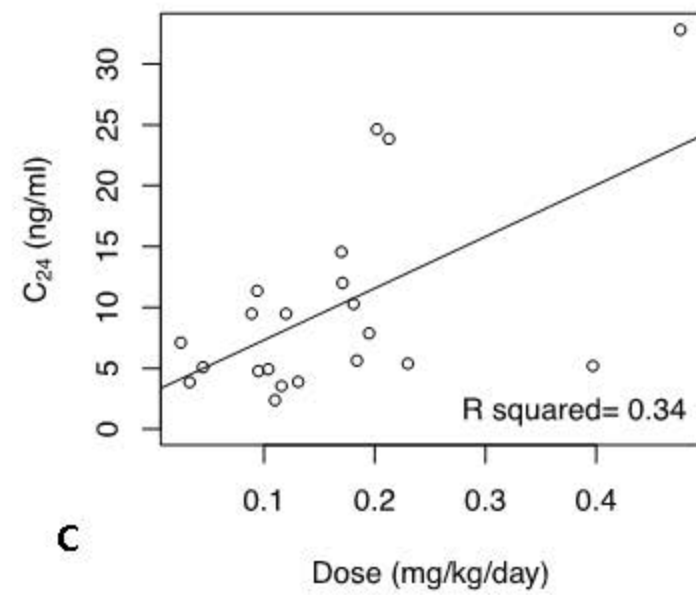
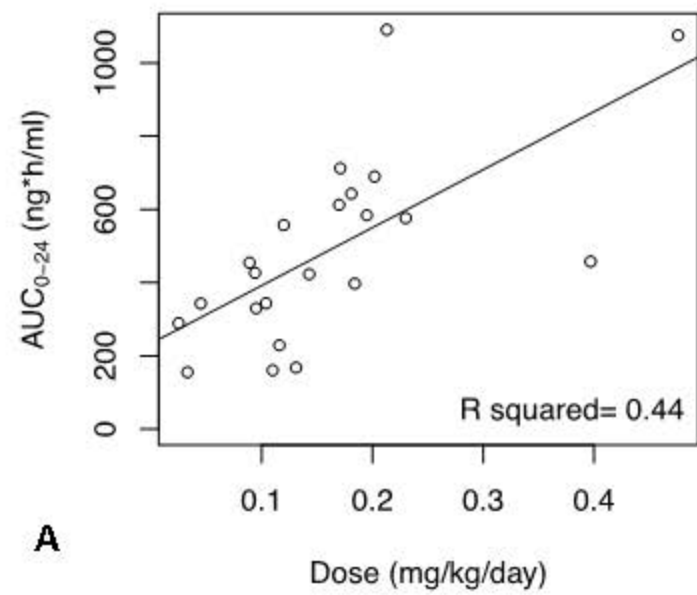
Data are mean ± SD (range) or counts (%); PK, pharmacokinetic; eGFR, estimated glomerular filtration rate.

Supplementary Table S2. Summary of clinical laboratory assessments of change from baseline in lisinopril-naïve patients

Laboratory assessment	Lisinopril dose			All (n=15)
	Low 0.1 mg/kg (n=6)	Middle 0.2 mg/kg (n=6)	High 0.4 mg/kg (n=3)	
Potassium: change score (mEq/L)	0.1 ± 0.3	-0.3 ± 0.6	0.3 ± 0.5	0 ± 0.5
eGFR: ratio	1 (14%)	1.02 (10%)	0.89 (14%)	0.99 (13%)
eGFR: largest % decrease	15%	12%	21%	21%
Urine protein/creatinine: change score	-0.45 ± 0.6	-0.08 ± 0.15	-0.74 ± 1.37	-0.33 ± 0.59

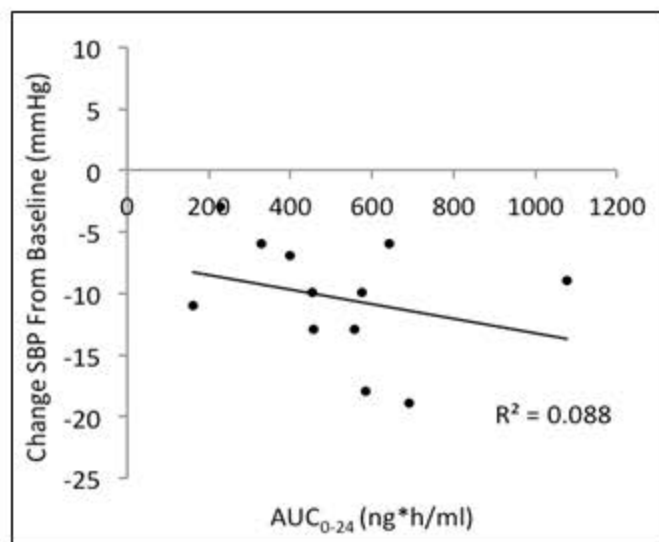
Mean change scores (worst post-dose – baseline) presented for potassium and the urine protein/creatinine ratio. Geometric mean of the ratio (worst post-dose / baseline with CV%) and greatest decrease presented for eGFR by dose group. Two patients in the high dose group had an evaluable urine protein/creatinine change score.

**Supplementary
Figure S1.**

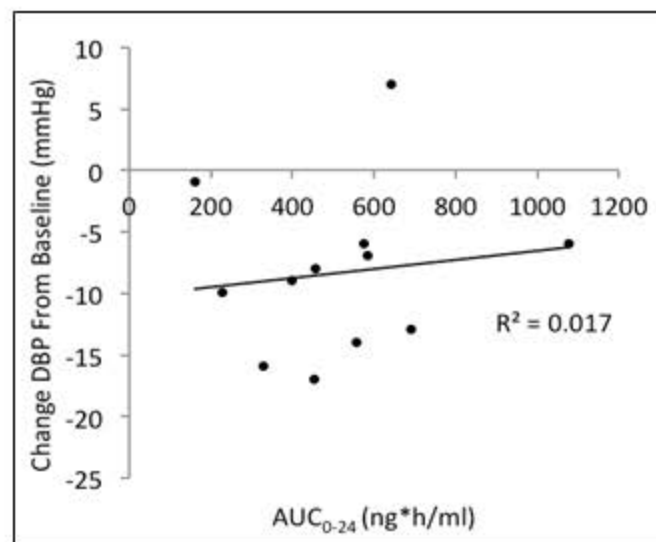


**Supplementary
Figure S2.**

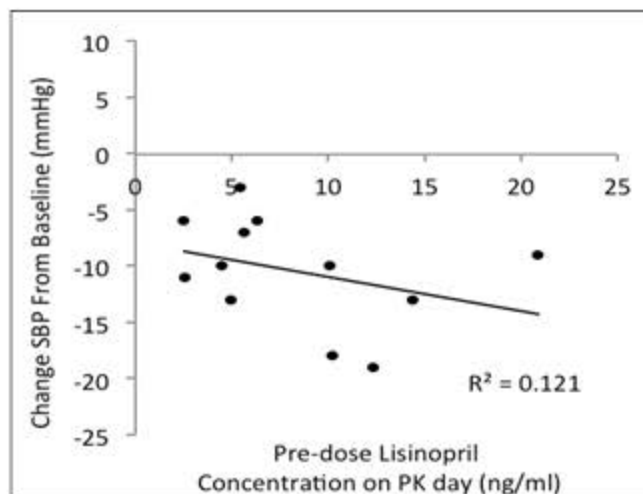
**A. Change in SBP at T=0h
(pre-dose) vs AUC_{0-24}**



**B. Change in DBP at T=0h
(pre-dose) vs AUC_{0-24}**



**C. Change in SBP at T=0h (pre-
dose) vs pre-dose Concentration**



**D. Change in DBP at T=0h (pre-
dose) vs pre-dose Concentration**

