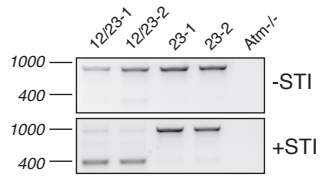
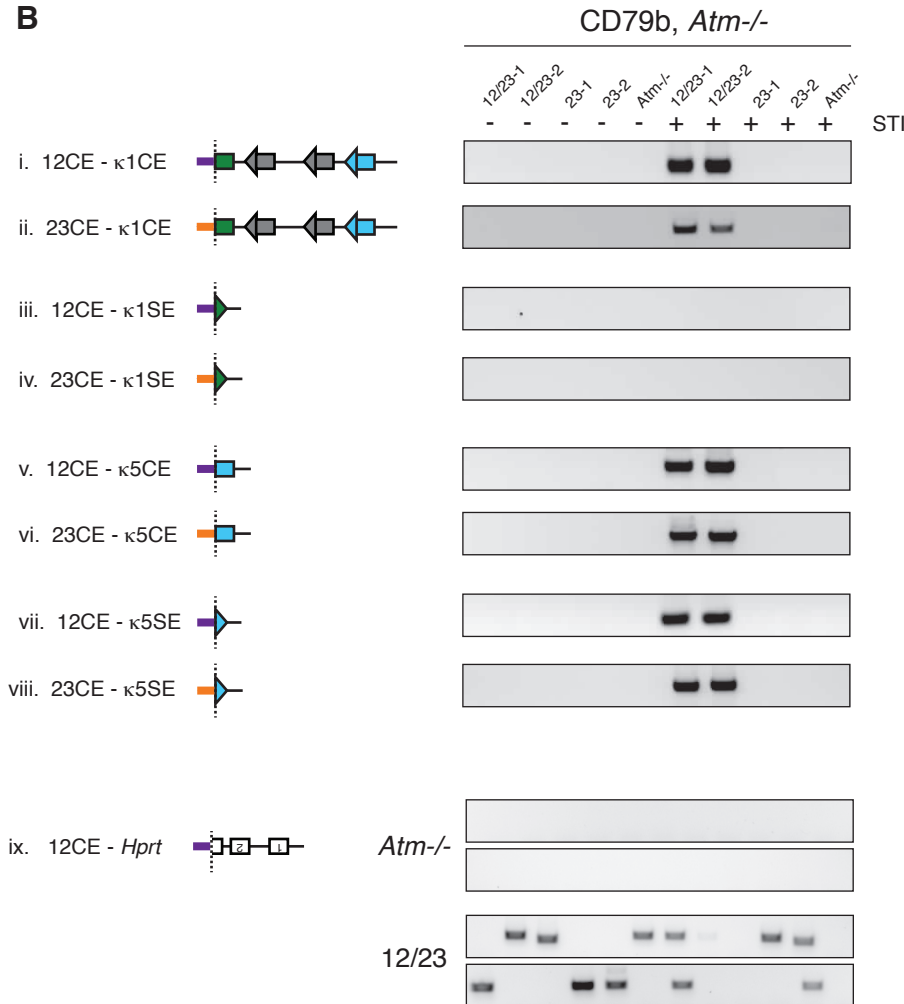


A CD79b, *Atm*^{-/-}



B



C

<i>Atm</i> ^{-/-} cell line	Genomes tested	CJs detected
CD79b Notch1 cRSSki (1)	970,000	0
CD79b Notch1 cRSSki (2)	970,000	0
CD79b Bcl11b cRSSki (1)	970,000	0
CD79b Bcl11bcRSSki (2)	970,000	0
E1-Notch1 cRSSki (1)	960,000	0
E1-Notch1 cRSSki (2)	970,000	0
E1-Bcl11b cRSSki (1)	970,000	0
E1-Bcl11b cRSSki (2)	960,000	0