

Supplementary Information for

Bacterial floc mediated rapid streamer formation in creeping flows

Mahtab Hassanpourfard^a, Zahra Nikakhtari^b, Ranajay Ghosh^c, Siddhartha Das^d, Thomas Thundat^a, Yang Liu^e, Alope Kumar^{b*}

^aDepartment of Chemical and Materials Engineering, University of Alberta, Edmonton, Canada

^bDepartment of Mechanical Engineering, University of Alberta, Edmonton, Canada

^cDepartment of Mechanical and Industrial Engineering, Northeastern University, Boston MA 02115, USA

^d Department of Mechanical Engineering, University of Maryland, College Park, MD 20742, USA

^eDepartment of Civil and Environmental Engineering, University of Alberta, Edmonton, Canada

*Email for Correspondence: aloke.kumar@ualberta.ca

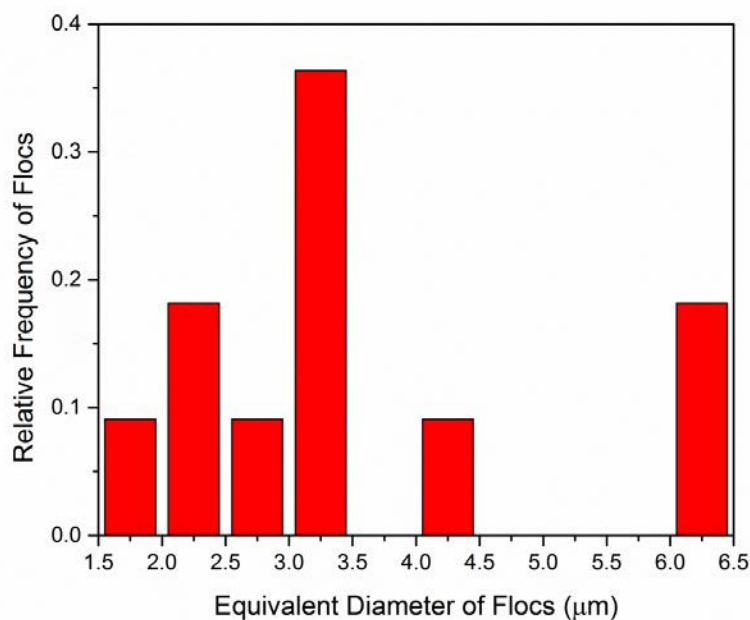
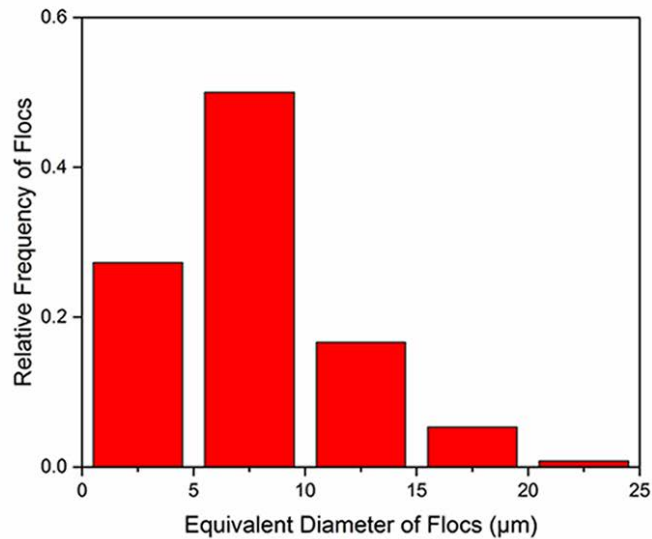
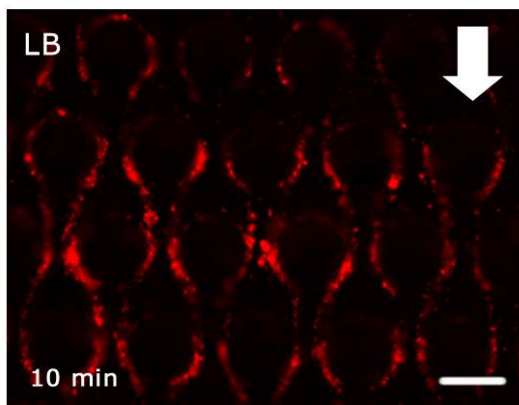


Figure S1: Relative frequency of flocs sizes entering the microfluidic channel.

a)



b)



c)

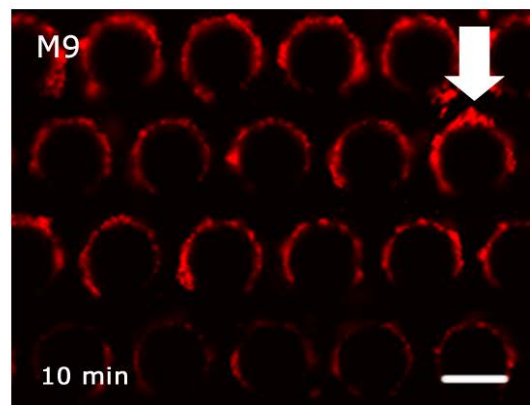


Figure S2: (a) Relative frequency histogram of the flocs cultured in M9 media. The median and mode for this relative frequency histogram are 6.78 and 5.85 μm , respectively (b) & (c) Comparison of streamer formation in LB and M9 media. Streamers did not form in M9 media at short-time scales (\sim few minutes) as compared to LB media.

Supplementary Videos

Supplementary Video 1: Video shows formation of streamers. Video runs at 2X i.e. 1 second of video time represents 2 seconds of experimental time. Scale bar represents 50 μm .

Supplementary Video 2: Video shows the large time scale movement of the streamer. A timer (hr:min:secs:milliseconds) depicts the experimental time. Note that the video has been sped up 32x. Scale bar represents 50 μm .