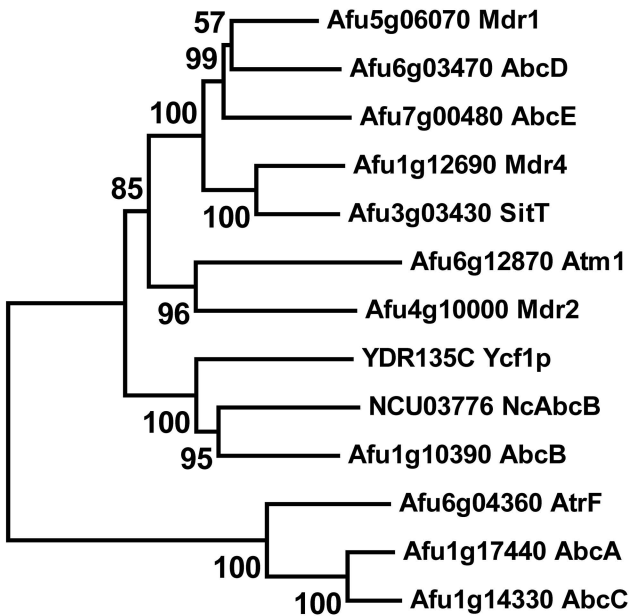


Supplementary Table 1.

Strain List

species	strain	Genotype	Source
<i>Neurospora crassa</i>	NcW#1	$\Delta His-3; \Delta ads-4$	this study
	NcW#2	$\Delta ads-4; ads-4$	this study
	<i>ads-4</i> OE	OE:: <i>ads-4</i>	this study
	WT	wild type	FGSC
	FGSC #11386	$\Delta ads-4$	FGSC
	FGSC #12544	$\Delta Ncmmt-2$	FGSC
	FGSC #13802	$\Delta erg5$	FGSC
	FGSC #21286	$\Delta NcabcB$	FGSC
	FGSC #11238	$\Delta cdr4$	FGSC
	FGSC #13302	$\Delta Ncmnn4$	FGSC
FGSC #13399	$\Delta Ncrta2$	FGSC	
<i>Aspergillus fumigatus</i>	YJ407	wild type	Jin cheng lab
	CEA17	$\Delta pyrG89$	Jin cheng lab
	Afu1g16460	$\Delta Afads4$	this study

Supplementary Fig. 1 Sequence alignment of ADS-4 homologs. Sequence alignment was performed using clustalx 1.83 and conserved amino acids were shaded. FOXG_11153, FVEG_09636, FGSG_01555, MGG_03288, Afulg16460, and ANID_11891 were homologs of ADS-4 in *Fusarium oxysporum*, *Fusarium verticilloides*, *Fusarium graminearum*, *Magnaporthe oryzae*, *Aspergillus fumigatus*, and *Aspergillus nidulans*, respectively.



0.2

Supplementary Fig. 2 Phylogenetic analysis of NcAbcB and its homologs in *Aspergillus fumigatus* and *Saccharomyces cerevisiae*. The neighbor-joining tree was constructed using MEGA version 6 with cut-off bootstrap values of 50% obtained from 1000 replicates (NCU=*Neurospora crassa*, Afu=*Aspergillus fumigatus*, YDR=*Saccharomyces cerevisiae*).