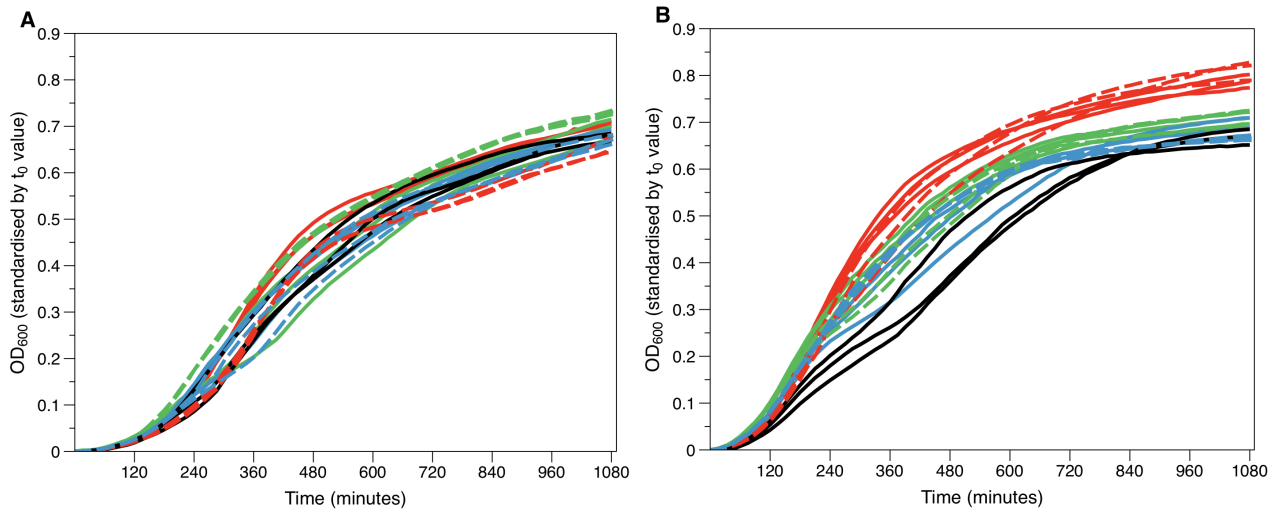


**Figure S2**



**Diluting Bald's eyesalve causes it to lose bactericidal activity against planktonic cultures of *S. aureus*.** 100  $\mu$ l of sterile distilled water or serial dilutions of Bald's eyesalve (Batch A) was added to two or three replica 200  $\mu$ l mid log-phase SWF cultures ( $10^4$ - $10^5$  cells) of *S. aureus* carrying a *lux* reporter under the control of either a) a growth-dependent promoter (RN6390-B *S10::lux*) or b) a quorum sensing-dependent promoter (RN6390-B *P3::lux*). The optical density of the culture was measured at intervals over a further 18 hours' incubation at 37°C with periodic shaking. In both panels, the black lines show the water control, coloured solid lines show ES-O and coloured dashed lines show ES-L. Dilutions are 1/10 (red), 1/100 (green) and 1/1,000 (blue). In all panels, OD<sub>600</sub> was standardised by subtracting the OD for that culture at time zero (the eyesalve is a brown, slightly turbid liquid).