

SUPPLEMENTARY DATA

**Supplementary Figure 1. Maternal HF feeding and body composition of fetuses and dams.** 10-12 week-old nulliparous C57BL/6 female mice were mated with chow-fed males. HF diet was provided to dams during gestation. From E10-E18, the daily food intakes of HF-fed mice were significantly lower than that of controls (a). However, total energy intakes were comparable (b). HF feeding increased body fat mass of dams at both E15.5 and E17.5 (c). Maternal HF feeding slightly reduced dry lean body mass of fetuses at E18.5 (d). However, no significant effects on fetal weight (e) and adiposity (f) were found at E15.5 and E17.5.

Fig. 1a

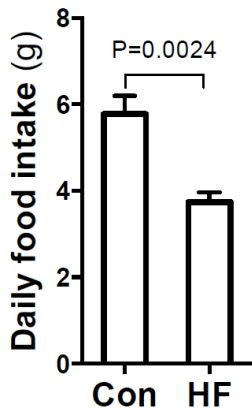


Fig. 1b

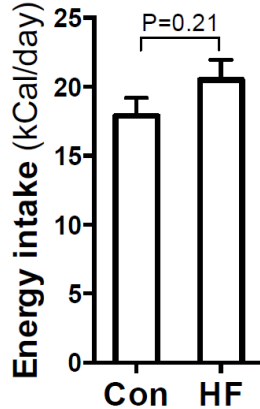


Fig. 1c

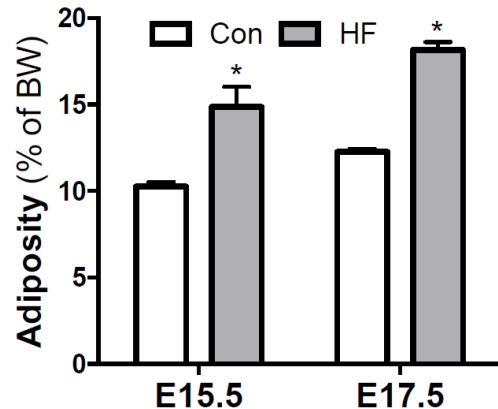


Fig. 1d

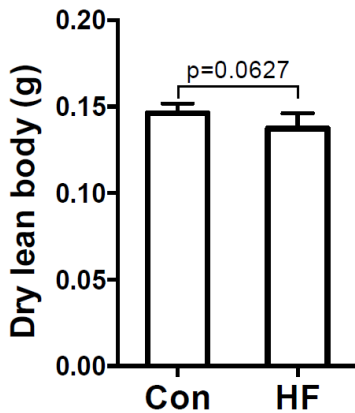


Fig. 1e

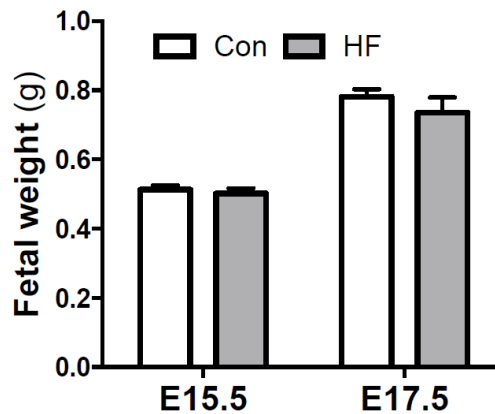


Fig. 1f

