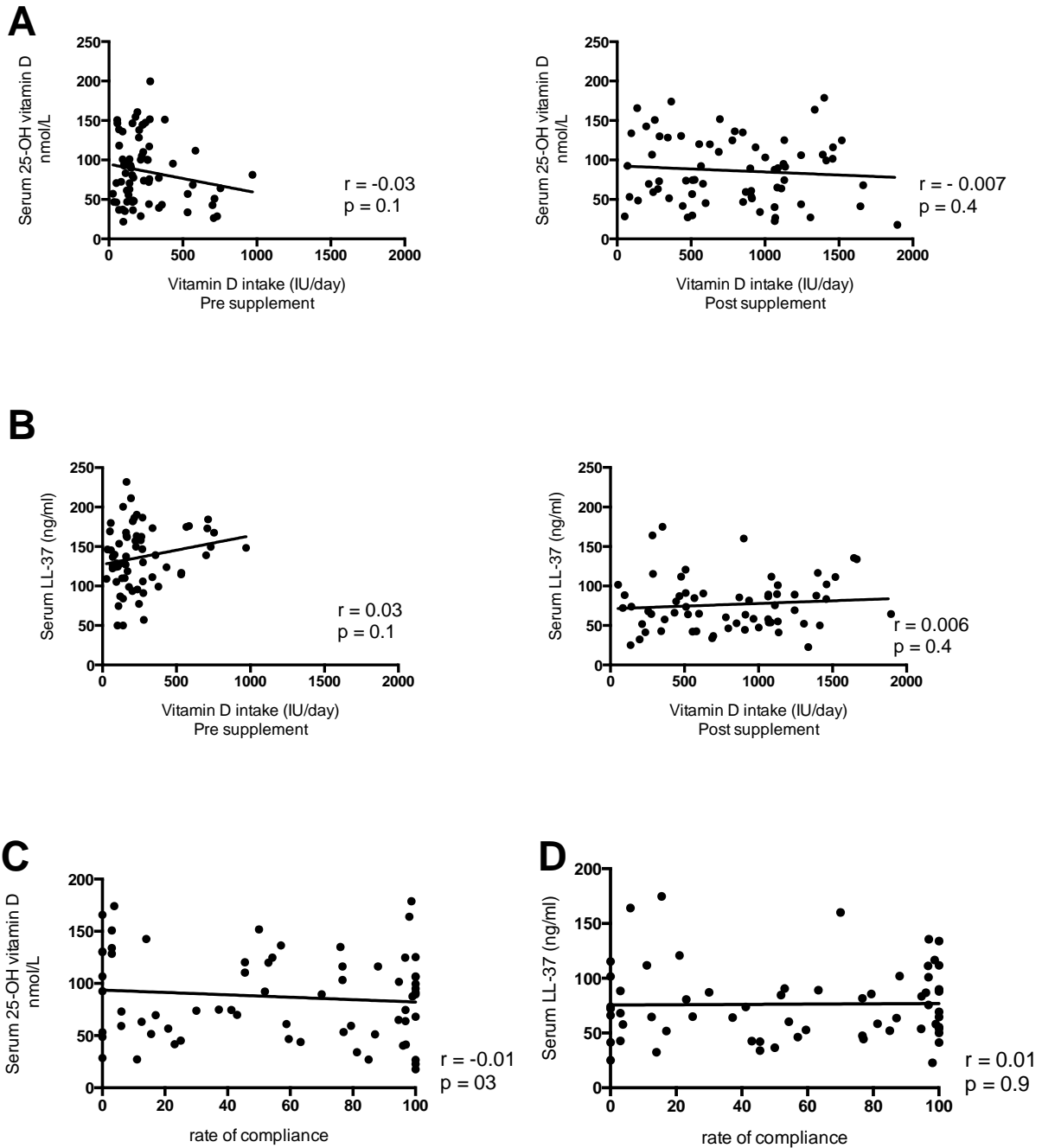


Supplemental Figure 1: Serum concentrations of (A) 25(OH)D and (B) LL-37 were evaluated for potential correlations with vitamin D intake, pre- and post-vitamin D supplementation. (C) Correlation of serum concentrations of 25(OH)D and LL-37 was determined with the rate of compliance for taking vitamin D supplements.



Supplemental Figure 2: Specific VDR SNPs were analyzed at specific four restriction sites (**A**) Fok1, (**B**) Taq1, (**C**) Apa1, and (**D**) Bsm1. The figure shows the association of the VDR SNPs with serum levels of 25(OH)D monitored pre- and post-vitamin D supplementation.

