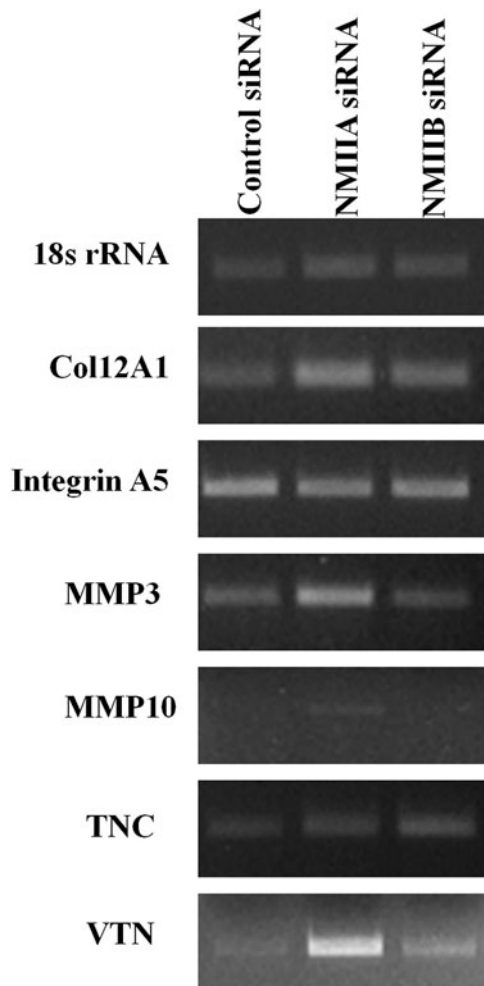


Supplementary Data



SUPPLEMENTARY FIG. S1. RT-PCR analysis of WJ-derived MSCs treated with control, NMIIA, or NMIIB siRNA. 18s rRNA was used as an internal control. Results are representative of at least two independent biological or donor samples. MSCs, mesenchymal stem cells; NMII, nonmuscle myosin II; RT-PCR, reverse transcription-polymerase chain reaction; WJ, Wharton's jelly.