

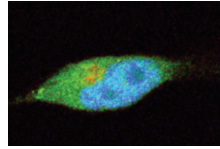
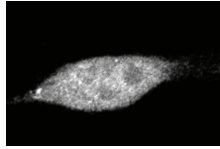
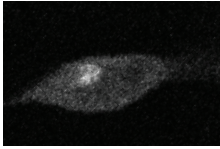
**S9 Fig. Arf1 does not co-localize with RalF<sub>R</sub>.** HeLa cells co-expressing EYFP, EYFP-RalF<sub>RIFL</sub> or EYFP-RalF<sub>RbFL</sub> and mRFP-Arf1 were fixed with 4% para-formaldehyde. Nuclei were stained with DAPI (blue). (Scale bar: 10 μm)

Arf1

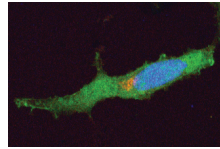
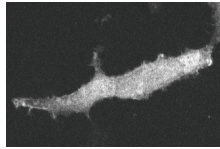
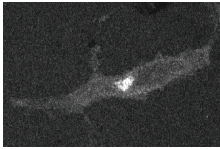
YFP

Merge

pEYFP



Rt FL



Rb FL

