

# Supporting Information

Perlman et al. 10.1073/pnas.1421391112

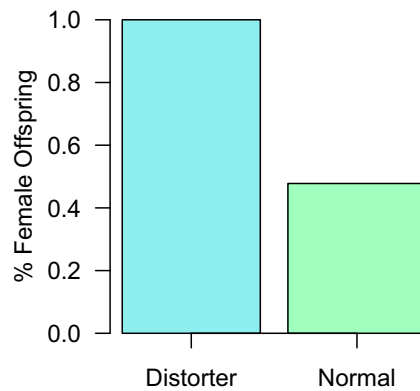


Fig. S1. Offspring sex ratio of normal and distorter *L. nr. bostrychophila*, ( $n = 10$  containers of each type).

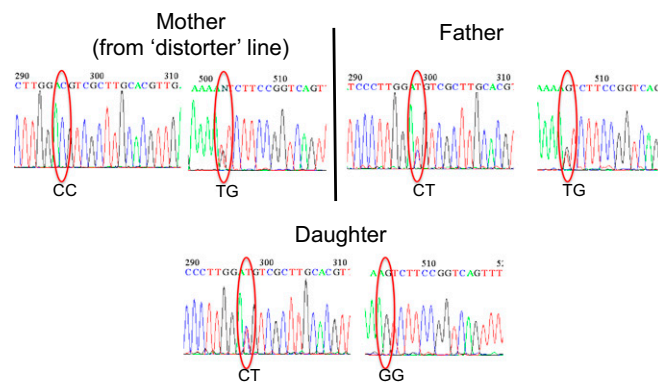


Fig. S2. Gene flow between distorter females and males. Chromatograms of two linked SNPs at a putative phosphodiesterase gene showing that distorter females inherit paternal alleles. PCR conditions:  $95\text{ }^{\circ}\text{C} \times 3\text{ min}$ ,  $(94\text{ }^{\circ}\text{C} \times 1\text{ min}, 54\text{ }^{\circ}\text{C} \times 1\text{ min}, 72\text{ }^{\circ}\text{C} \times 1.5\text{ min}) \times 35$ ,  $72\text{ }^{\circ}\text{C} \times 10\text{ min}$ . Primers (phos1F-TCCCTCCGTCAATAAATGC and phos1R-AATGTTGAAATGCCGAGTC) amplify a 627-bp product.

## Dataset S1. Primer sequences and PCR conditions for mitochondrial Sanger sequencing

[Dataset S1](#)