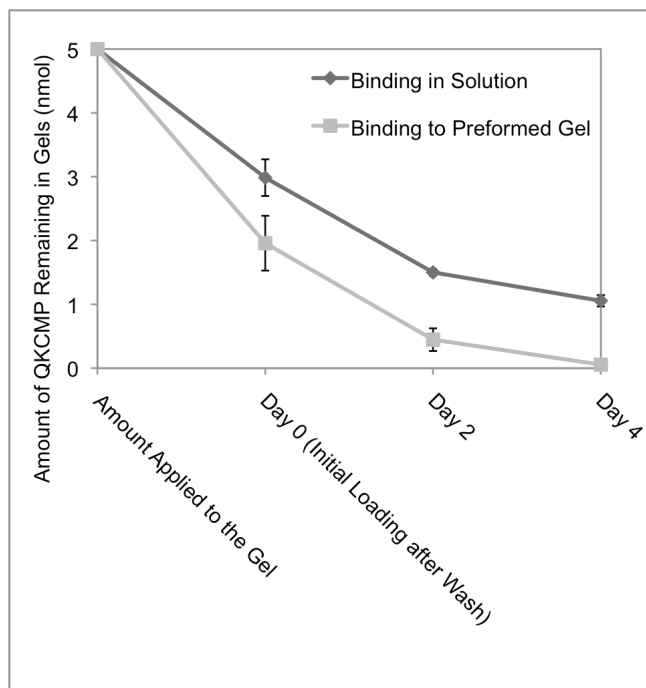
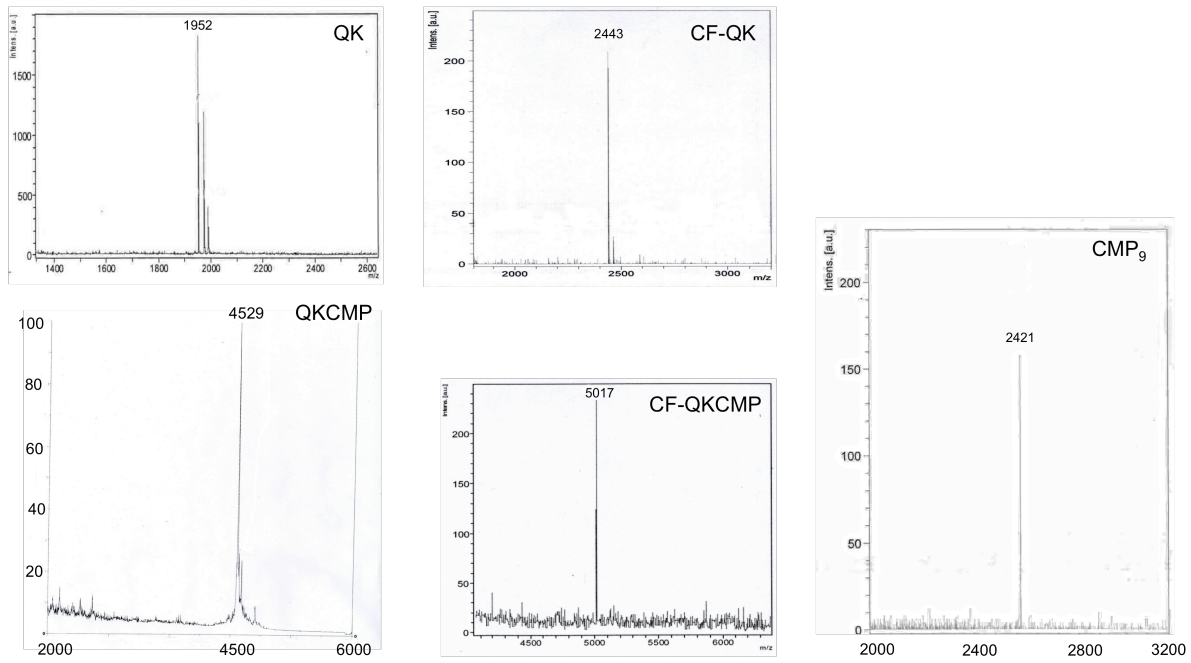


Supporting Information should be included here (for submission only; for publication, please provide Supporting Information as a separate PDF file).



**Figure S1.** Cumulative release profiles of QKCMP from type I collagen gels, where quenched QKCMP was added in solution before gel formation (binding in solution) and to preformed gel (binding to preformed gel). Day 0 and hour 0 represent the amount of compounds remaining in the collagen matrix after removal of unbound peptide by washing with 4 °C blank buffer. Error bars represent  $\pm$ SD.



**Figure S2.** MALDI-ToF mass spectroscopy of target peptides after purification.