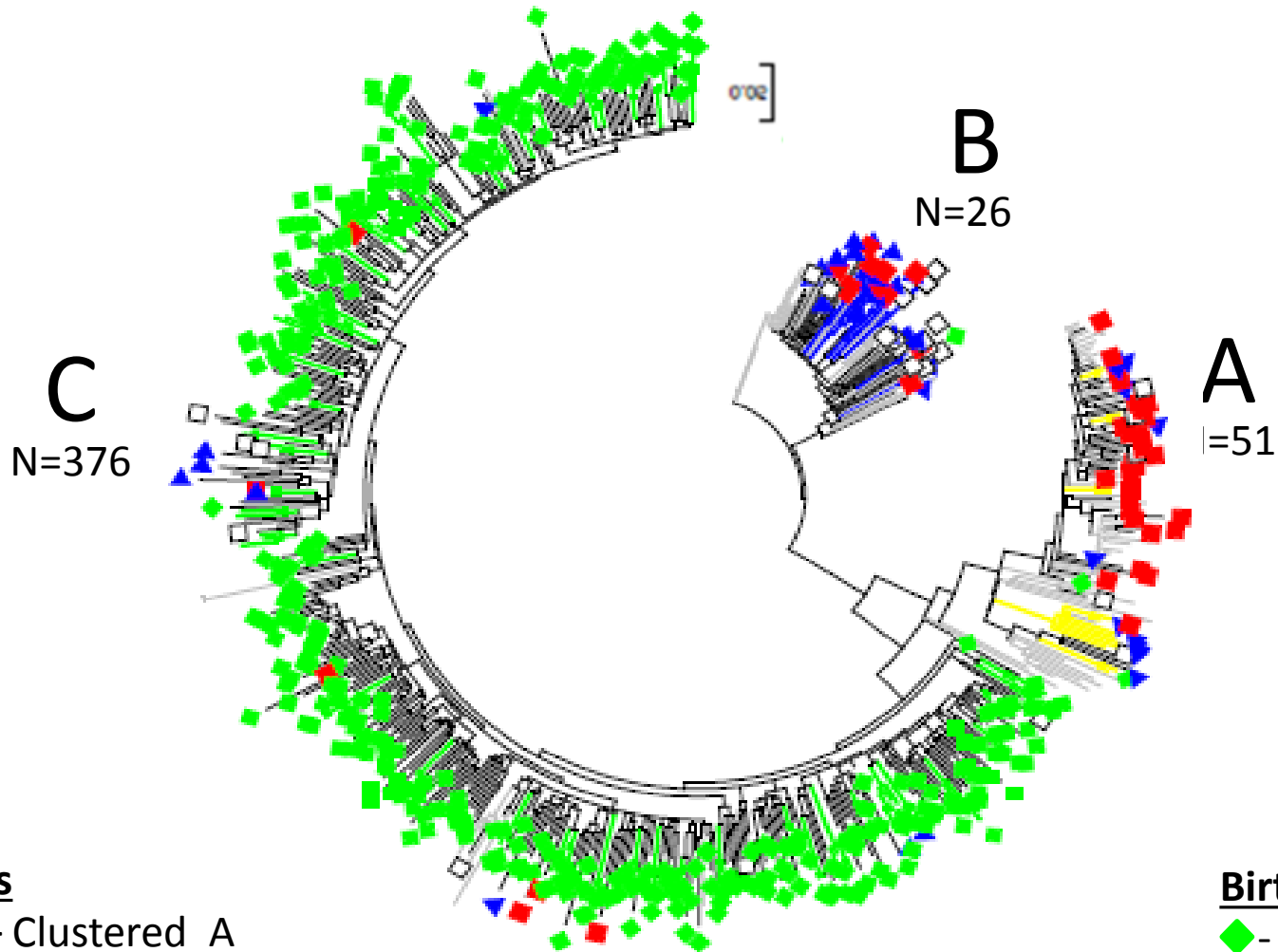


# Hetero

n=453



## Clusters

- Clustered A
- Clustered B
- Clustered C
- Reference sequences (Los-Alamos DB)

## Birth Place

- ◆ - Ethiopia
- - FSU
- ▲ - Israel
- - Other

# IVDU

n=169

**A**  
N=123

**B**  
N=36

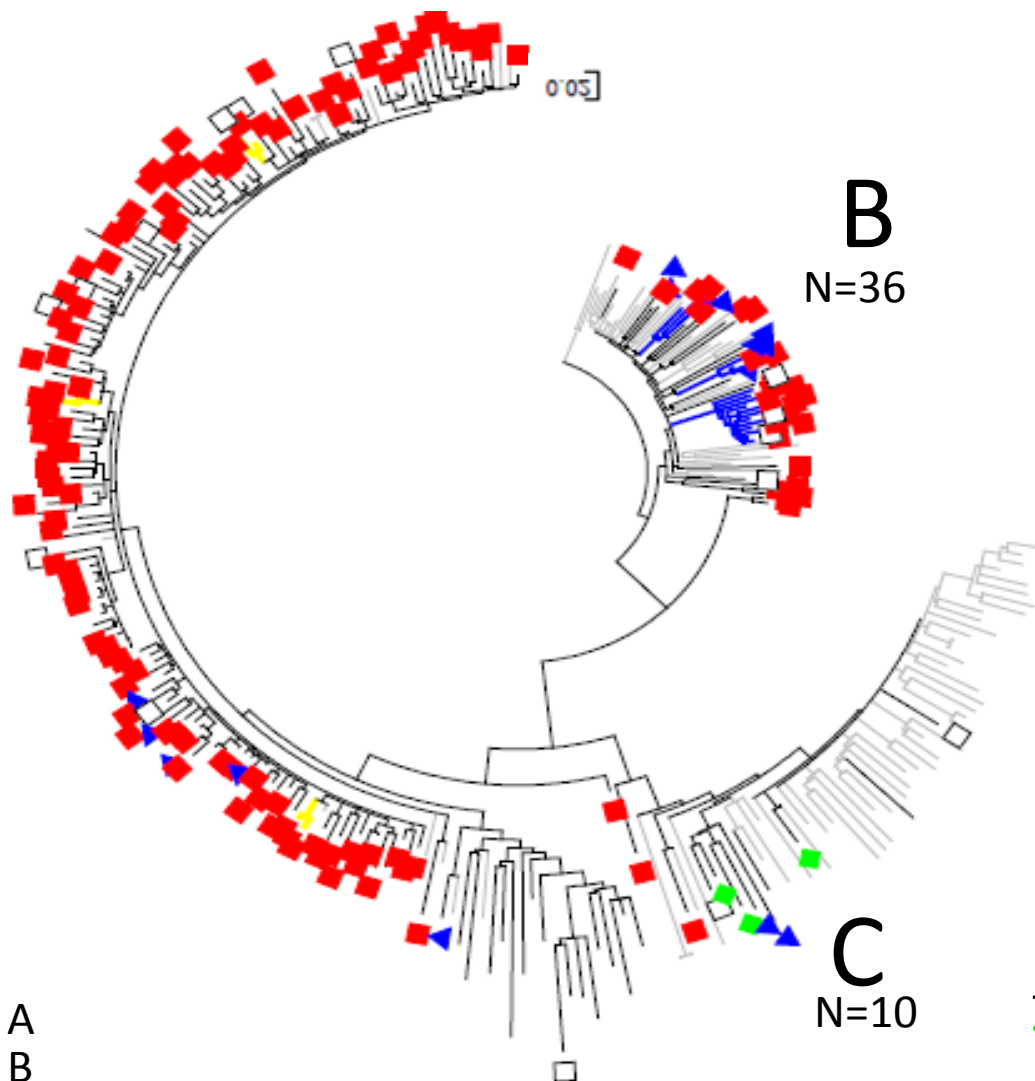
**C**  
N=10

## Clusters

- – Clustered A
- – Clustered B
- – Clustered C
- – Reference sequences (Los-Alamos DB)

## Birth Place

- ◆ - Ethiopia
- - FSU
- ▲ - Israel
- - Other



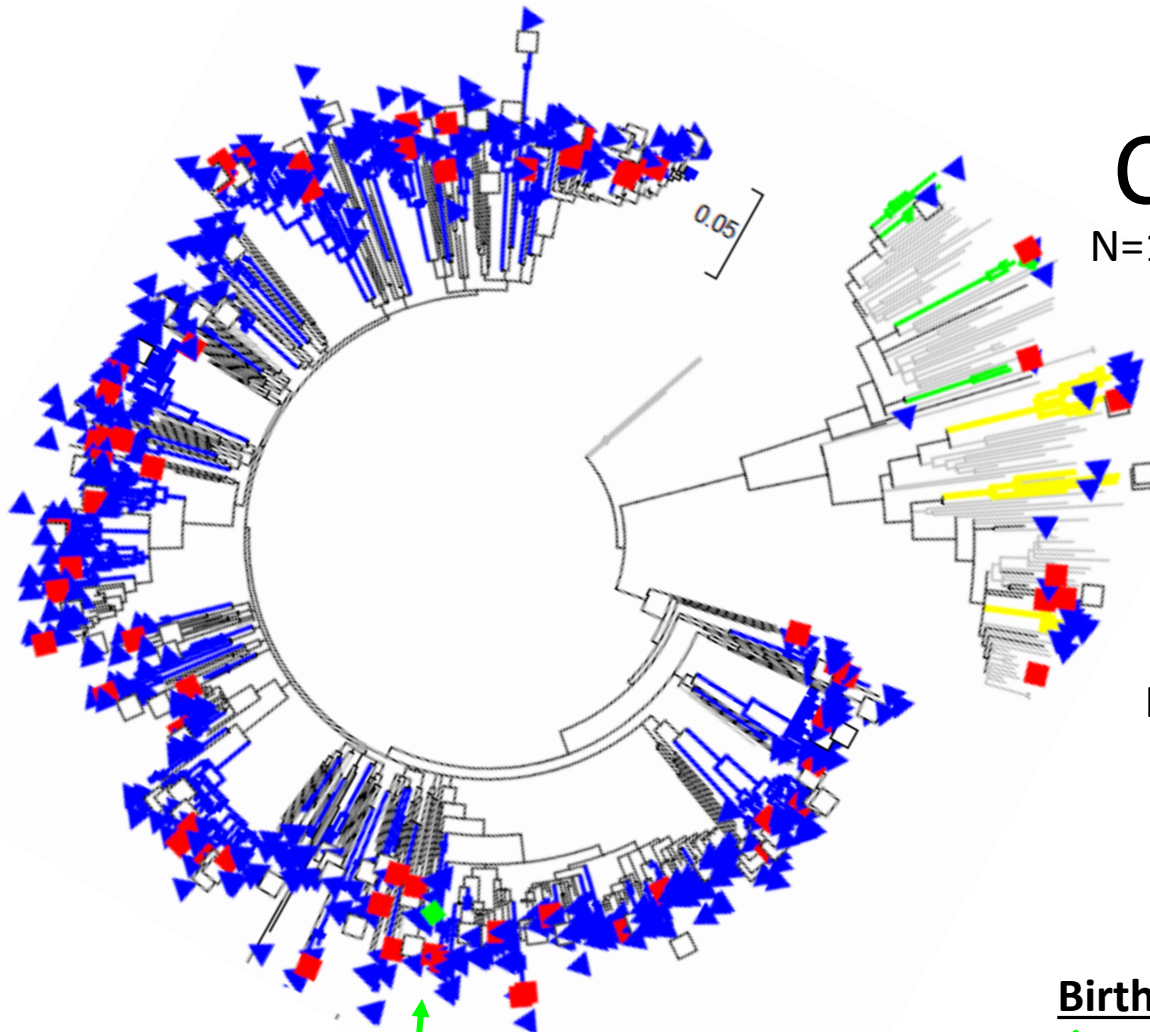
# MSM

N=677

**B**  
N=638

**C**  
N=10

**A**  
N=29



## Clusters

- Clustered A
- Clustered B
- Clustered C
- Reference sequences (Los-Alamos DB)

## Birth Place

- ◆ - Ethiopia
- - FSU
- ▲ - Israel
- - Other