

Figure 3

Please note:

1. The amount of material obtained in a plasmid pull-down experiment is relatively small; therefore we cut the blots into strips and incubate each strip with different antibodies, all of which have been validated.
2. Pol ϵ , PCNA, Rev1 and Rev7 blots were developed using films; the films were subsequently scanned. FancD2 and FancG were developed using the chemiluminescence function on an Amersham Imager 600 (GE Healthcare). We will note this difference in the materials and methods.

Figure 3: Pol , PCNA, Rev1, Rev7

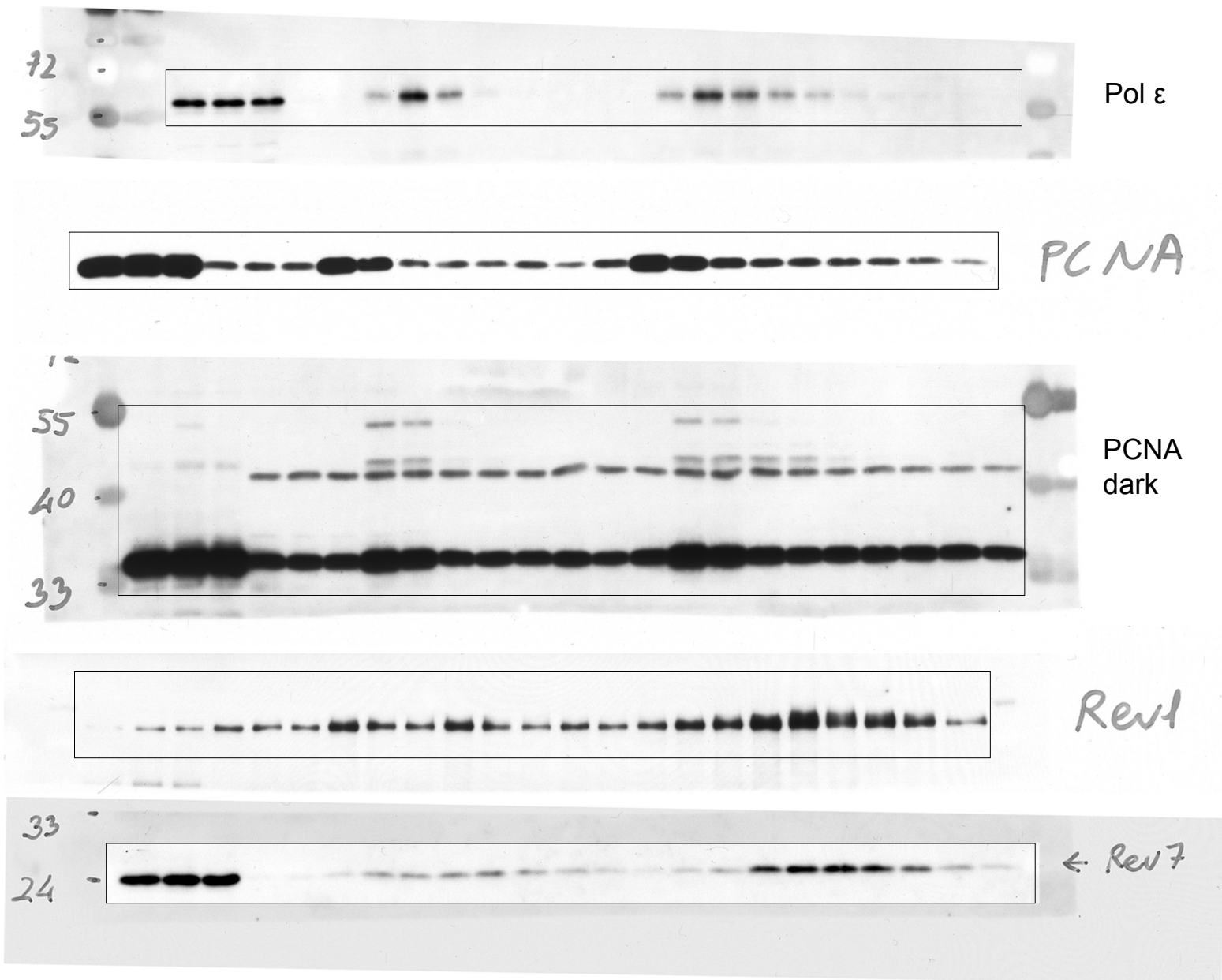
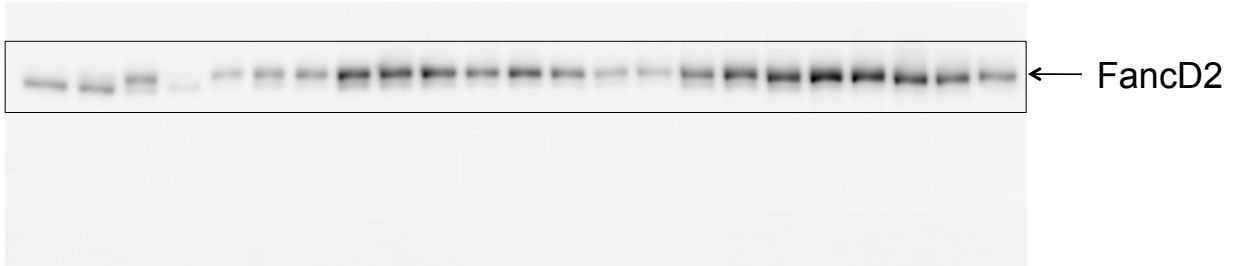


Figure 3: FancD2

Tif image



Jpeg image

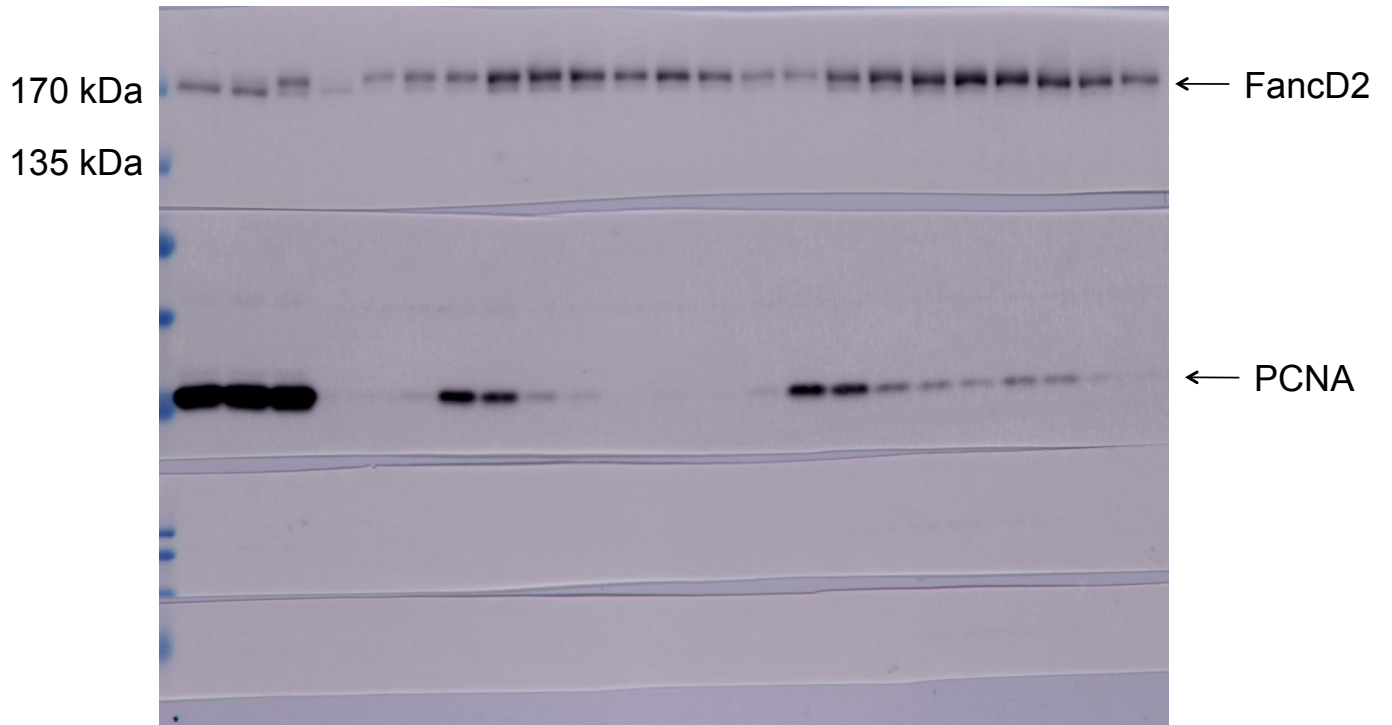


Figure 3: FancG

Tif image



Jpeg image

