

1  
2  
3 **Figure 4.** Fold change between LCM and TL based on the amount of tumor present in the  
4 specimen after normalization of each TL to the matched LCM sample. For each group, mean and  
5 SEM are shown.  
6  
7  
8  
9

10  
11  
12 **Figure 5.** Unsupervised hierarchical clustering analysis of laser capture microdissected lung  
13 adenocarcinomas (LCM=green) matched whole undissected tissues (TL=blue) and LCM of the  
14 entire section (LCM-TL=red).  
15  
16  
17  
18  
19

20  
21  
22 **Table 1.** List of FDA approved compounds as well as a selected number currently under  
23 investigation for the treatment of NSCLC.  
24  
25  
26

27  
28  
29 **Supplementary table 1.** List of antibodies, vendors, and catalogue numbers used in the study.  
30  
31

32  
33  
34 **Supplementary table 2.** Range of the intensity values for the 15 matched LCM and TL samples  
35 included in the study.  
36  
37

38  
39 **Supplementary figure 1.** Representation of LCM process. Panel A shows a direct visualization  
40 of the Hematoxylin stained slide before LCM is performed. Panel B presents the Macro cap  
41 with the captured cells. Panel C shows the left over tissue after LCM is completed.  
42  
43  
44  
45

46  
47  
48 **Supplementary figure 2.** Pair-wise comparison of LCM and matched TL samples based on the  
49 raw data values.  
50  
51  
52  
53  
54  
55  
56  
57  
58  
59  
60

**Supplementary Table 1**

| <b>Catalog Number</b> | <b>Antibody</b>           | <b>Company</b> |
|-----------------------|---------------------------|----------------|
| 9271                  | Akt (S473)                | Cell Signaling |
| 3633                  | ALK (D5F3)                | Cell Signaling |
| 3348                  | ALK (Y1586)               | Cell Signaling |
| 3341                  | ALK (Y1604)               | Cell Signaling |
| 2232                  | EGFR                      | Cell Signaling |
| 2234                  | EGFR (Y1068)              | Cell Signaling |
| 44-792                | EGFR (Y1148)              | BioSource      |
| 44-794                | EGFR (Y1173)              | BioSource      |
| 2235                  | EGFR (Y992)               | Cell Signaling |
| 2242                  | ErbB2/HER2                | Cell Signaling |
| IMG-90189             | ErbB2/HER2 (Y1248)        | Imgenex        |
| 9101                  | ERK 1/2 (T202/Y204)       | Cell Signaling |
| 3488                  | HSP90a (T5/7)             | Cell Signaling |
| 3021                  | IGF-1R (Y1131)/IR(Y1146)  | Cell Signaling |
| 9128                  | MEK1 (S298)               | Cell Signaling |
| 9121                  | MEK1/2 (S217/221)         | Cell Signaling |
| 3126                  | Met (Y1234/1235)          | Cell Signaling |
| 2972                  | mTOR                      | Cell Signaling |
| 2971                  | mTOR (S2448)              | Cell Signaling |
| 07-021                | PDGF Receptor beta (Y716) | Upstate        |
| 3161                  | PDGF Receptor beta (Y751) | Cell Signaling |
| 3221                  | Ret (Y905)                | Cell Signaling |
| 5176-1                | Ron (Y1353)               | Epitomics      |
| 2471                  | VEGFR 2 (Y951)            | Cell Signaling |
| 2474                  | VEGFR 2 (Y996)            | Cell Signaling |
| 2478                  | VEGFR 2 (Y1175)           | Cell Signaling |

**Supplementary Table 2**

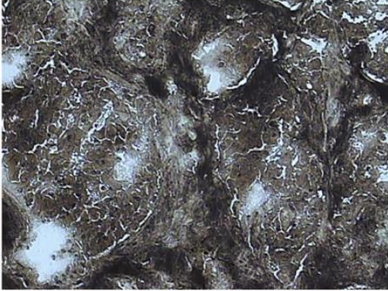
| Endpoints               | LCM                  | TL                  | Number of matched pairs analyzed |
|-------------------------|----------------------|---------------------|----------------------------------|
| Akt S473                | 323.44 – 14853.64    | 2073.51 – 36680.48  | 15                               |
| ALK Total               | 7600.73 -15521.78    | 11248.61 - 30333.24 | 15                               |
| ALK Y1586               | 34200.63 - 55826.29  | 25084.36 - 60475.9  | 15                               |
| ALK Y1604               | 8374.94 - 18939.4    | 6093.63 - 15537.31  | 15                               |
| EGFR Total              | 10006.6 - 99707.9    | 10742.89 - 58104.6  | 15                               |
| EGFR Y1068              | 0* - 48533.03        | 1570.26 - 28001.11  | 15                               |
| EGFR Y1148              | 25084.36 - 63576.57  | 28853.9 - 51021.38  | 15                               |
| EGFR Y1173              | 13003.83 - 50513.7   | 15168.85 - 40945.61 | 15                               |
| EGFR Y992               | 8751.66 - 26635.48   | 5074.58 - 17783.03  | 15                               |
| ErbB2/HER2 Total        | 8030.48 - 55270.8    | 6136.44 - 44355.84  | 14                               |
| ErbB2/Her2 Y1248        | 8391.71 - 40945.61   | 10948.95 - 37797.56 | 15                               |
| ERK1/2 T202/Y204        | 941.05 - 106937.51   | 6204.3-88432.98     | 15                               |
| HSP90a T5/7             | 18178.58 - 108012.27 | 6266.66 - 61083.7   | 13                               |
| IGF-1R Y1131/IR Y1146   | 0** - 10218.96       | 1679.07 - 11271.13  | 15                               |
| MEK 1/2 S217/221        | 6808.99 - 69563.8    | 16058.6 - 64215.48  | 15                               |
| MEK1 S298               | 19206.42 - 38948.66  | 5125.58 - 22471.44  | 15                               |
| Met Y1234/1235          | 10732.16 - 22697.26  | 10981.85 - 29143.86 | 15                               |
| mTOR Total              | 10414.97 - 26635.48  | 14100.98 - 43044.94 | 15                               |
| mTOR S2448              | 5825.49 - 22471.44   | 11626 - 103777.05   | 15                               |
| PDGF Receptor beta Y716 | 13480.5 - 91126.14   | 13333.03 - 52575.2  | 15                               |
| PDGF Receptor beta Y751 | 6285.49 - 19970.27   | 16333.93 - 56954.03 | 15                               |
| Ret Y905                | 5990.91 - 15803.71   | 8866.18 - 21418.28  | 15                               |
| Ron Y1353               | 7405.65 - 14129.21   | 6483.4 - 20723.01   | 15                               |
| VEGFR2 Y951             | 0** - 8955.29        | 1992.21 - 11579.6   | 15                               |
| VEGFR2 Y996             | 10107.16 - 20292.36  | 13629.61 - 50513.7  | 15                               |
| VEGFR2 Y1175            | 7037.44 - 26903.18   | 7143.79 - 20681.61  | 13                               |

\*Intensity value was below limit detection for 3 patients

\*\* Intensity value was below limit detection for 1 patient

# Supplementary Figure 1

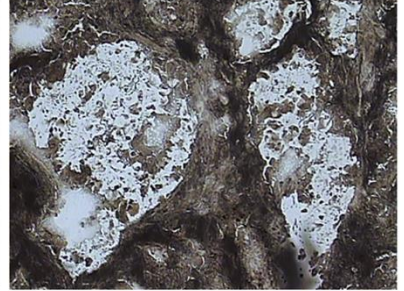
A)



B)



C)



# Supplementary Figure 2

